

Harris Central Appraisal District

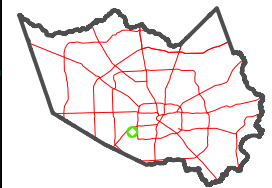


0 45 90 180 Feet

PUBLICATION DATE: 1/6/2023

Geospatial or map data maintained by the Harris Central Appraisal District is for informational purposes and may not have been prepared for or be suitable for legal, engineering, or surveying purposes. It does not represent an on-the-ground survey and only represents the approximate location of property boundaries.

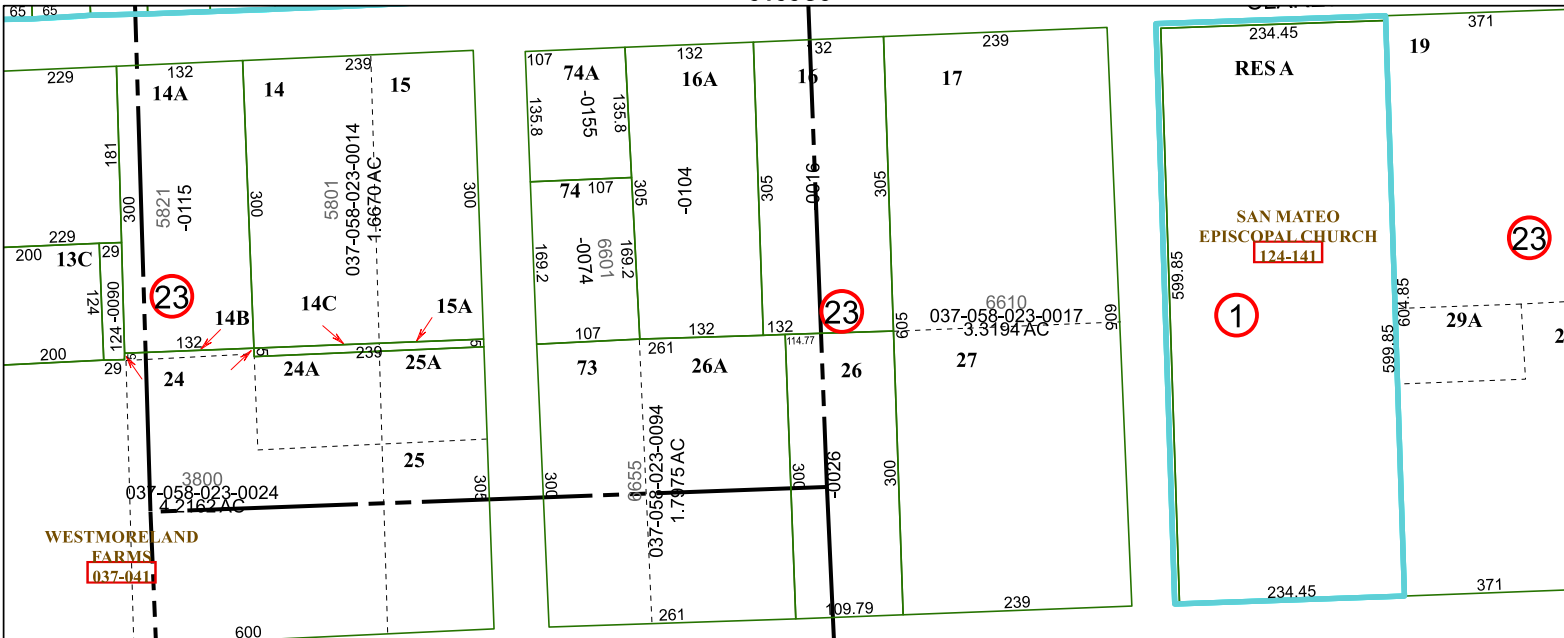
MAP LOCATION



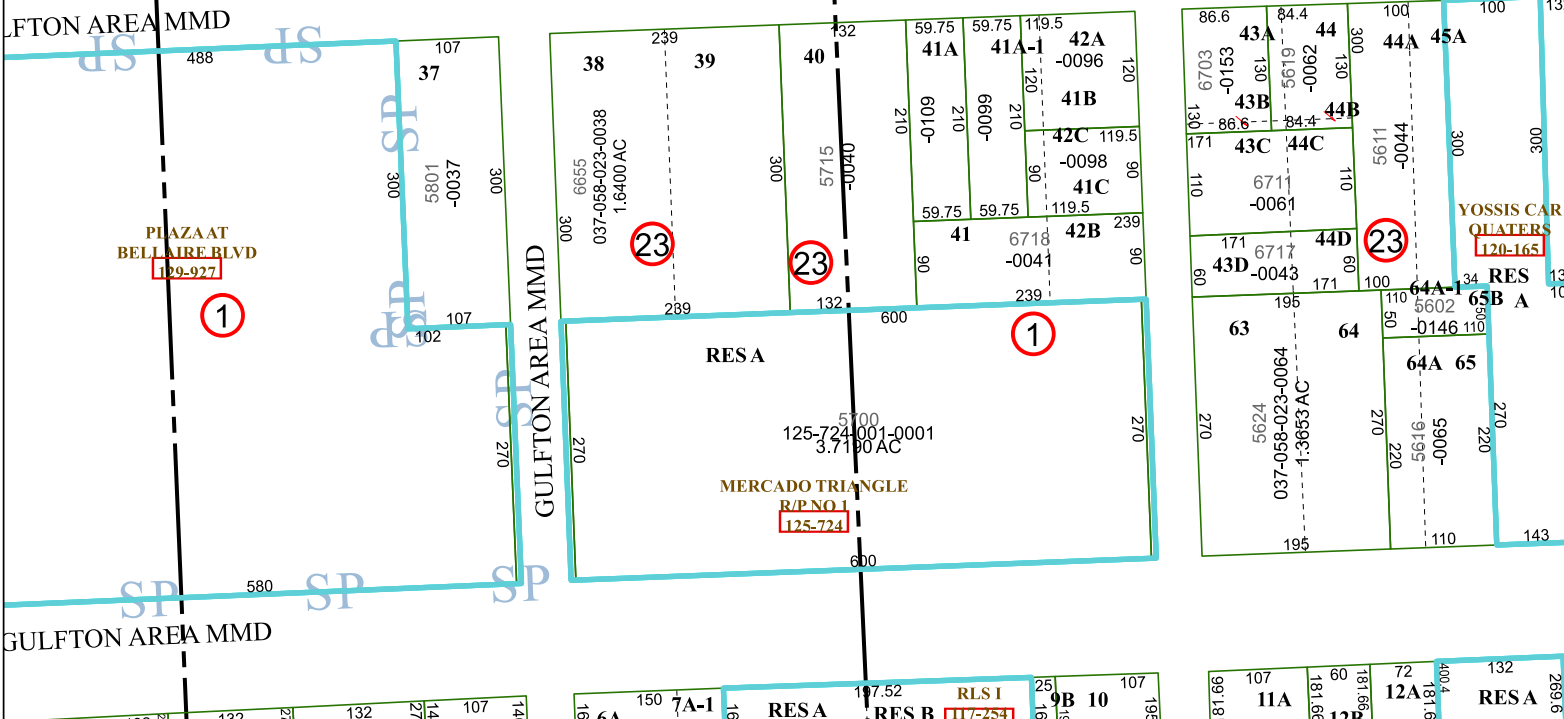
FACET 5155C7

1	2	3	4	1
5	6	7	8	5
9	10	11	12	9

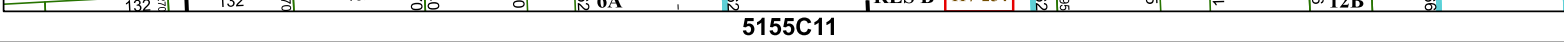
5155C3



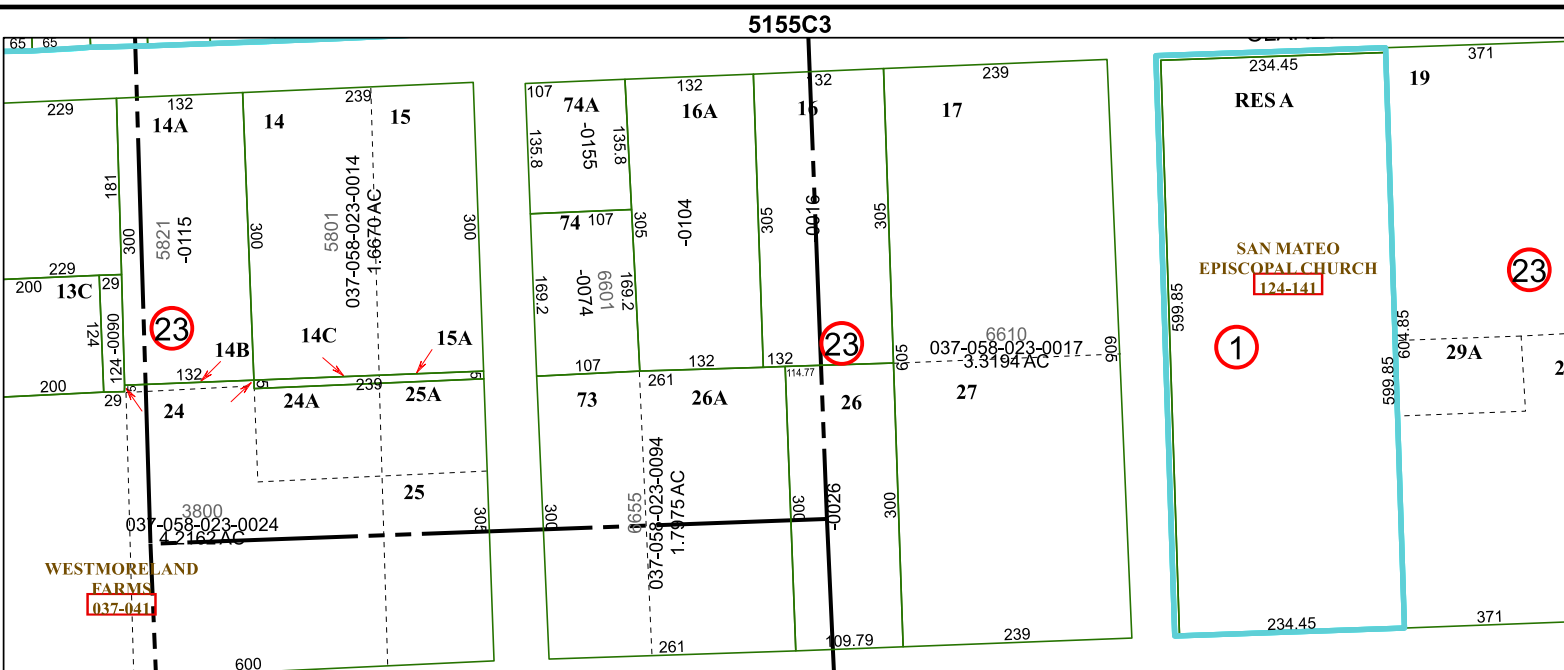
5155C11



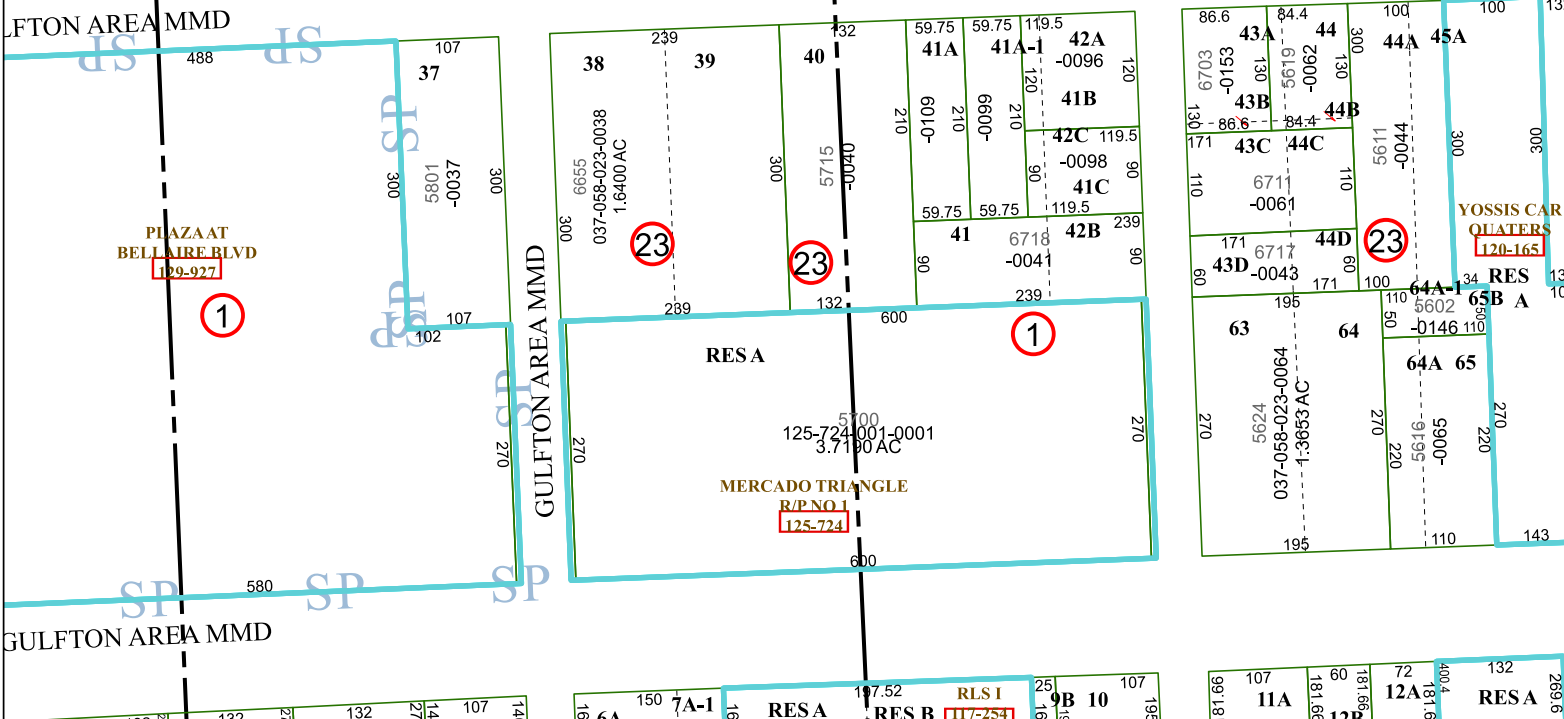
5155C7



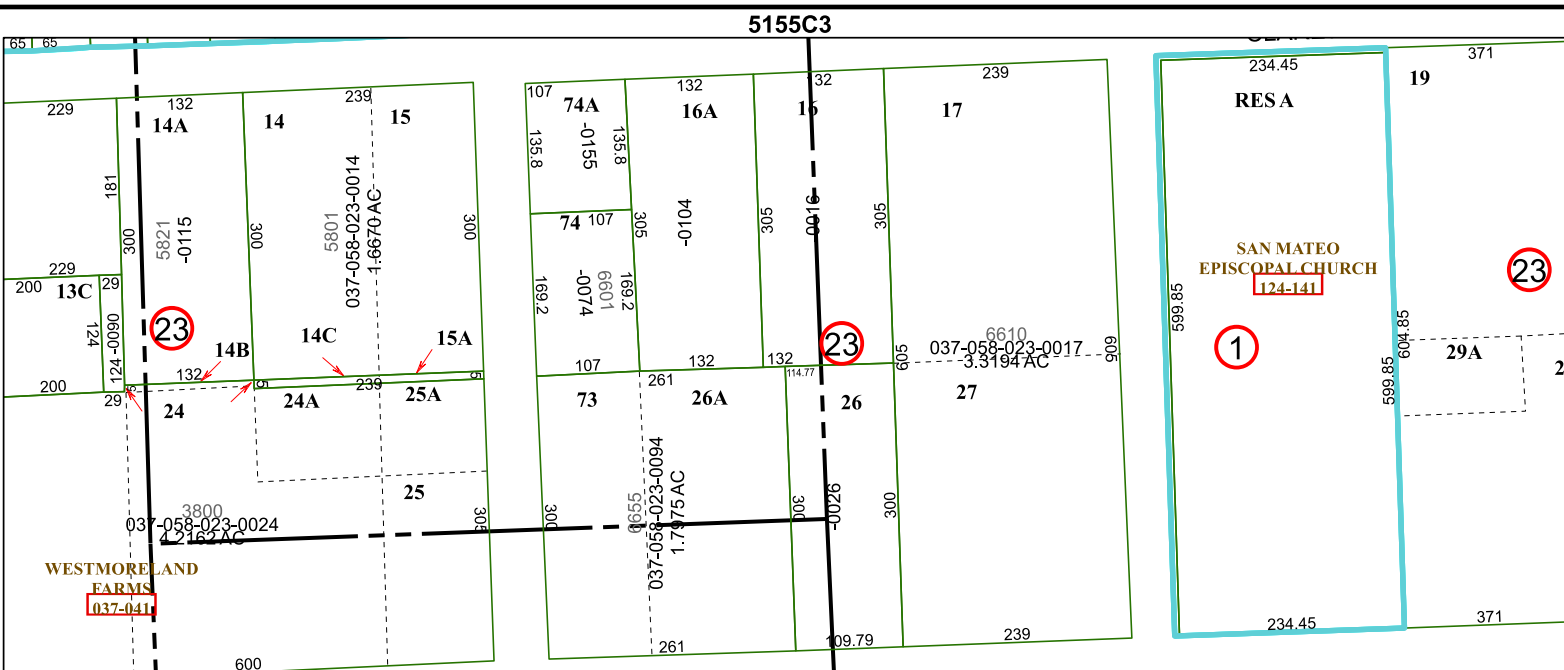
5155C6



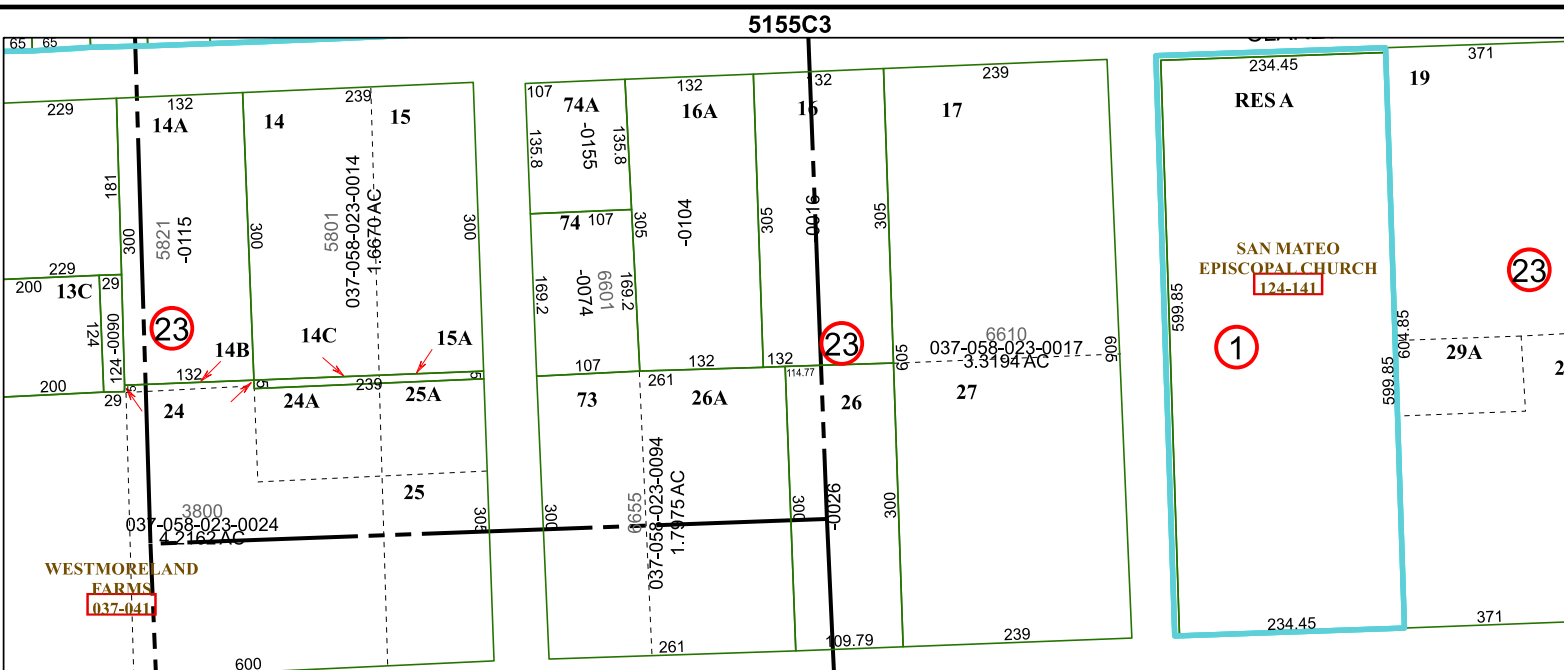
5155C5



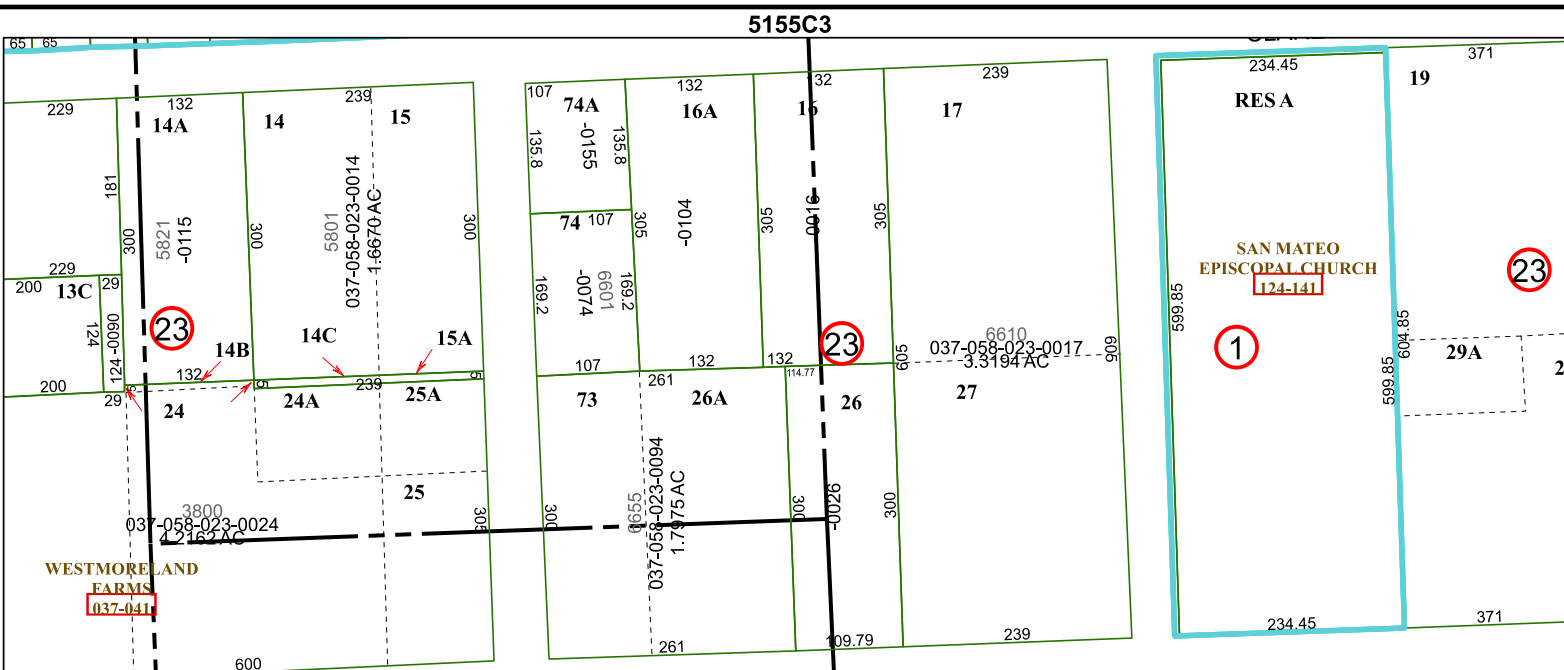
5155C4



5155C3



5155C2



5155C1

