

# Harris Central Appraisal District

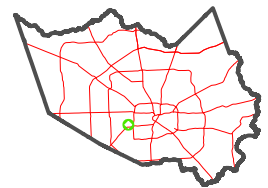


0 45 90 180 Feet

PUBLICATION DATE: 4/8/2024

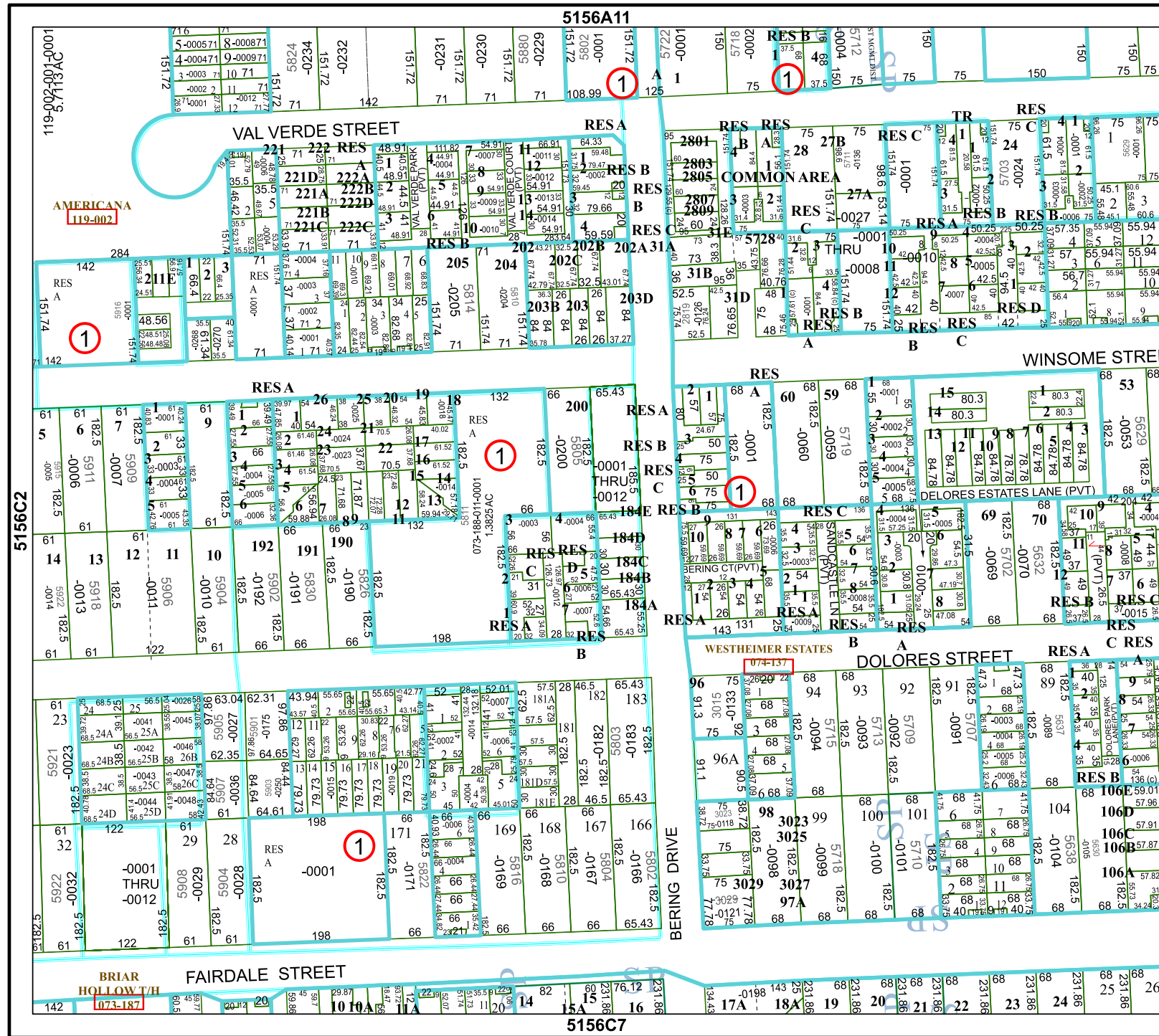
Geospatial or map data maintained by the Harris Central Appraisal District is for informational purposes and may not have been prepared for or be suitable for legal, engineering, or surveying purposes. It does not represent an on-the-ground survey and only represents the approximate location of property boundaries.

MAP LOCATION



## FACET 5156C3

9	10	11	12	9
1	2	3	4	1
5	6	7	8	5



5156A11

5156C7

1000-002-001-001-6-11

AMERICANA 119-002

5156C2

1

1

1

1

1

5156C3

BRIAR HOLLOW/H 073-187