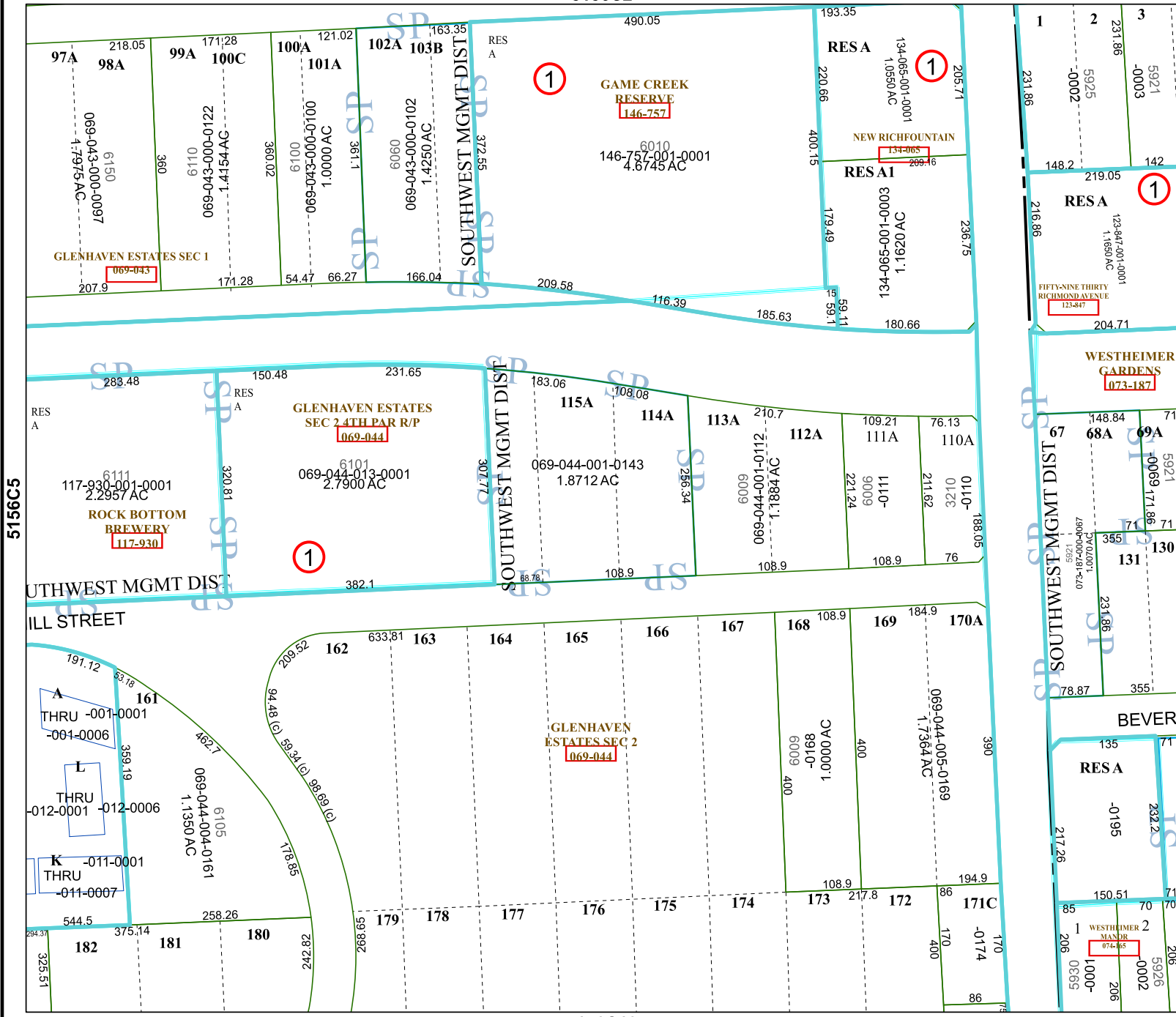


5156C2



5156C5

5156C10

Harris Central Appraisal District



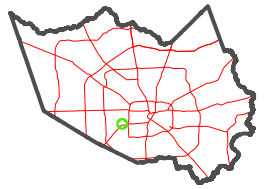
0 45 90 180 Feet

PUBLICATION DATE: 1/17/2023

Geospatial or map data maintained by the Harris Central Appraisal District is for informational purposes and may not have been prepared for or be suitable for legal, engineering, or surveying purposes. It does not represent an on-the-ground survey and only represents the approximate location of property boundaries.



MAP LOCATION



FACET 5156C6

4	1	2	3	4
8	5	6	7	8
12	9	10	11	12

5156C7

5156C8

5156C9

5156C10

5156C11

5156C12