

Harris Central Appraisal District



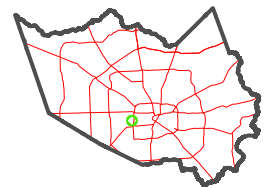
0 45 90 180 Feet

PUBLICATION DATE: 5/21/2024

Geospatial or map data maintained by the Harris Central Appraisal District is for informational purposes and may not have been prepared for or be suitable for legal, engineering, or surveying purposes. It does not represent an on-the-ground survey and only represents the approximate location of property boundaries.



MAP LOCATION

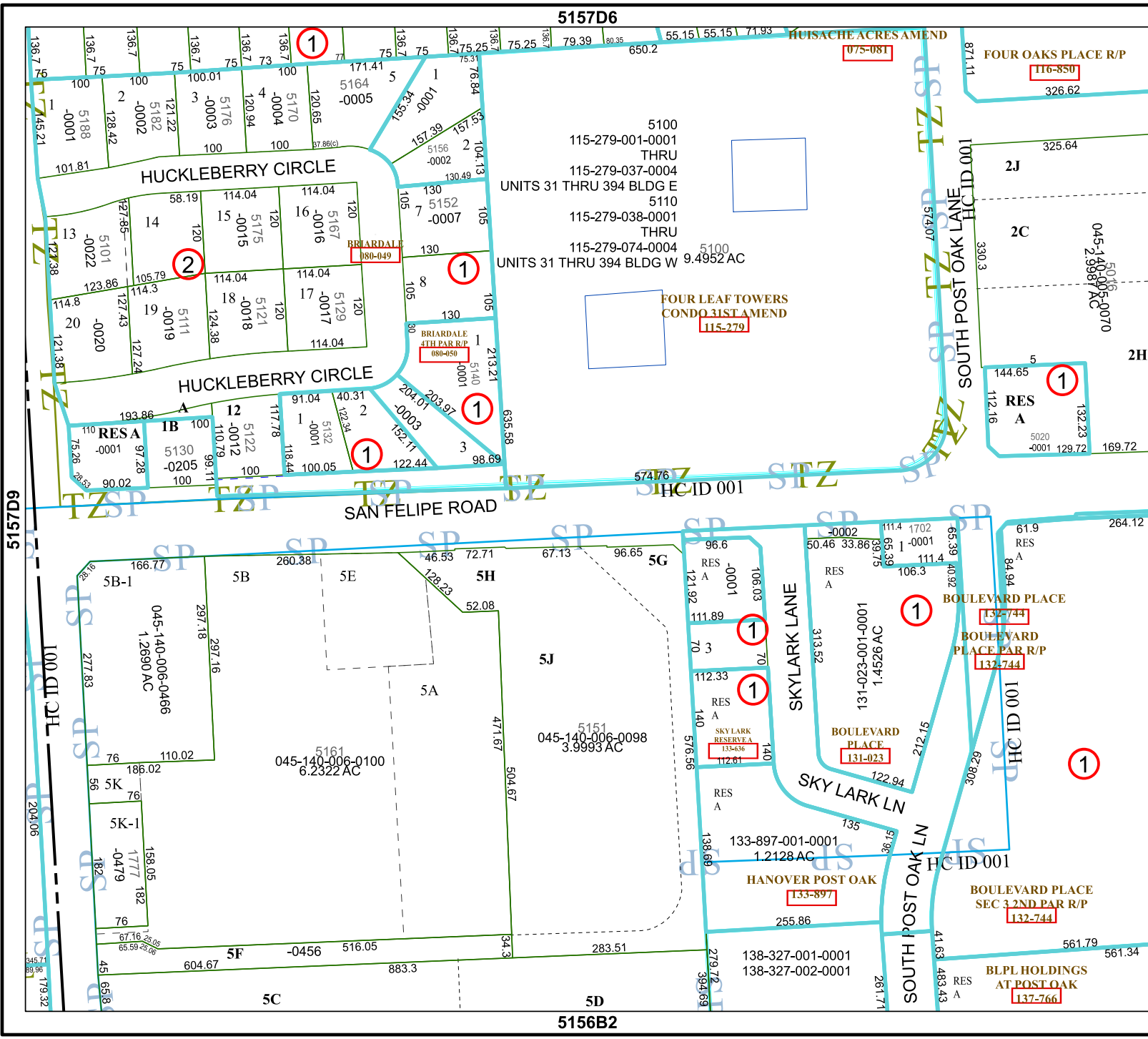


FACET 5157D10

8	5	6	7	8
12	9	10	11	12
4	1	2	3	4

5157D6

5156B2



075-081

116-850

880-049

080-050

115-279

1

132-744

132-744

131-023

1

133-897

132-744

137-766