

Harris Central Appraisal District

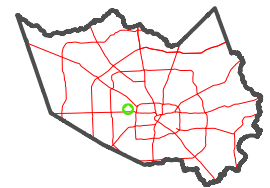


0 45 90 180 Feet

PUBLICATION DATE: 2/27/2023

Geospatial or map data maintained by the Harris Central Appraisal District is for informational purposes and may not be suitable for legal, engineering, or surveying purposes. It does not represent an on-the-ground survey and only represents the approximate location of property boundaries.

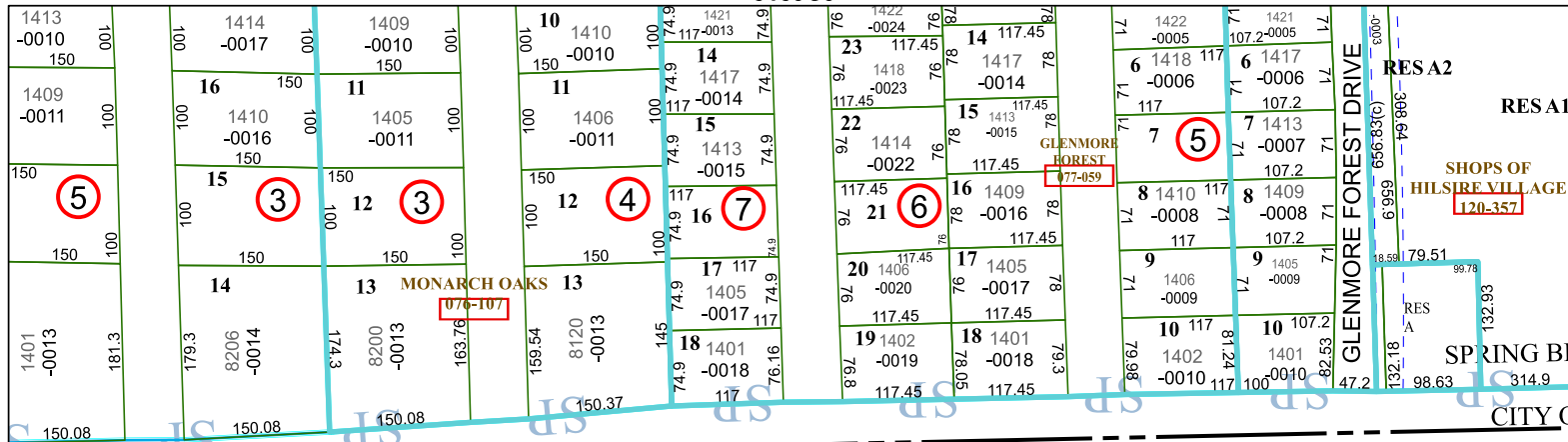
MAP LOCATION



FACET 5158A1

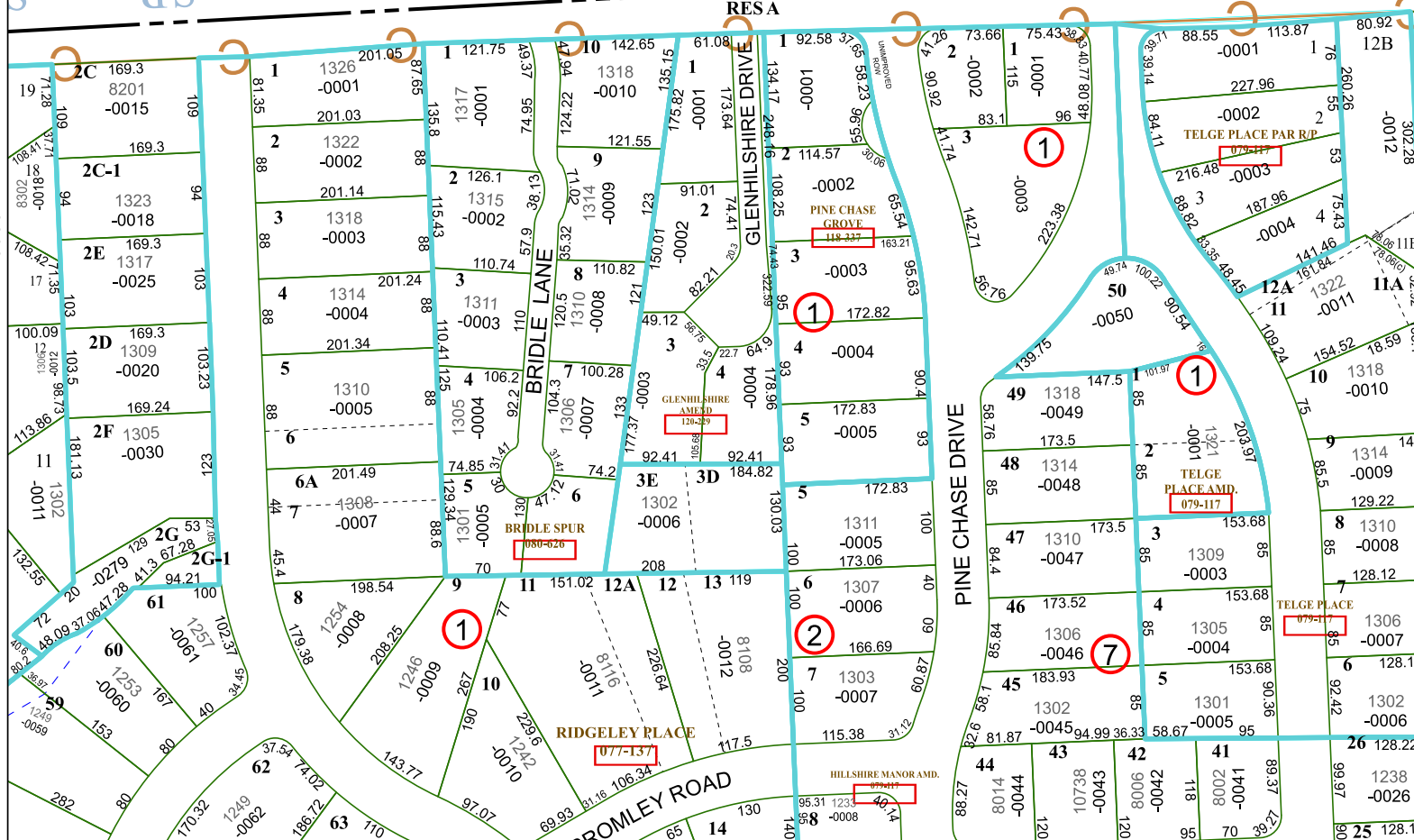
11	12	9	10	11
3	4	1	2	3
7	8	5	6	7

5159C9



RESA

5158A5



5058B4

5158A2