

Harris Central Appraisal District

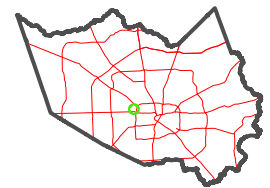


0 45 90 180 Feet

PUBLICATION DATE: 5/6/2024

Geospatial or map data maintained by the Harris Central Appraisal District is for informational purposes and may not have been prepared for or be suitable for legal, engineering, or surveying purposes. It does not represent an on-the-ground survey and only represents the approximate location of property boundaries.

MAP LOCATION



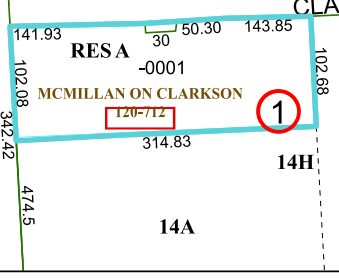
FACET 5158B2

12	9	10	11	12
4	1	2	3	4
8	5	6	7	8

5159D10



5158B6



1200
045-175-002-0240
8.5571 AC

RESA -0001
MCMILLAN ON CLARKSON
120-712

14A

5158B1

5158B3

