

# Harris Central Appraisal District

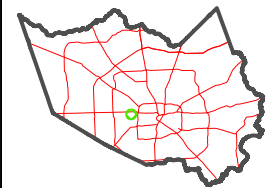


0 45 90 180 Feet

PUBLICATION DATE: 1/6/2023

Geospatial or map data maintained by the Harris Central Appraisal District is for informational purposes and may not have been prepared for or be suitable for legal, engineering, or surveying purposes. It does not represent an on-the-ground survey and only represents the approximate location of property boundaries.

MAP LOCATION

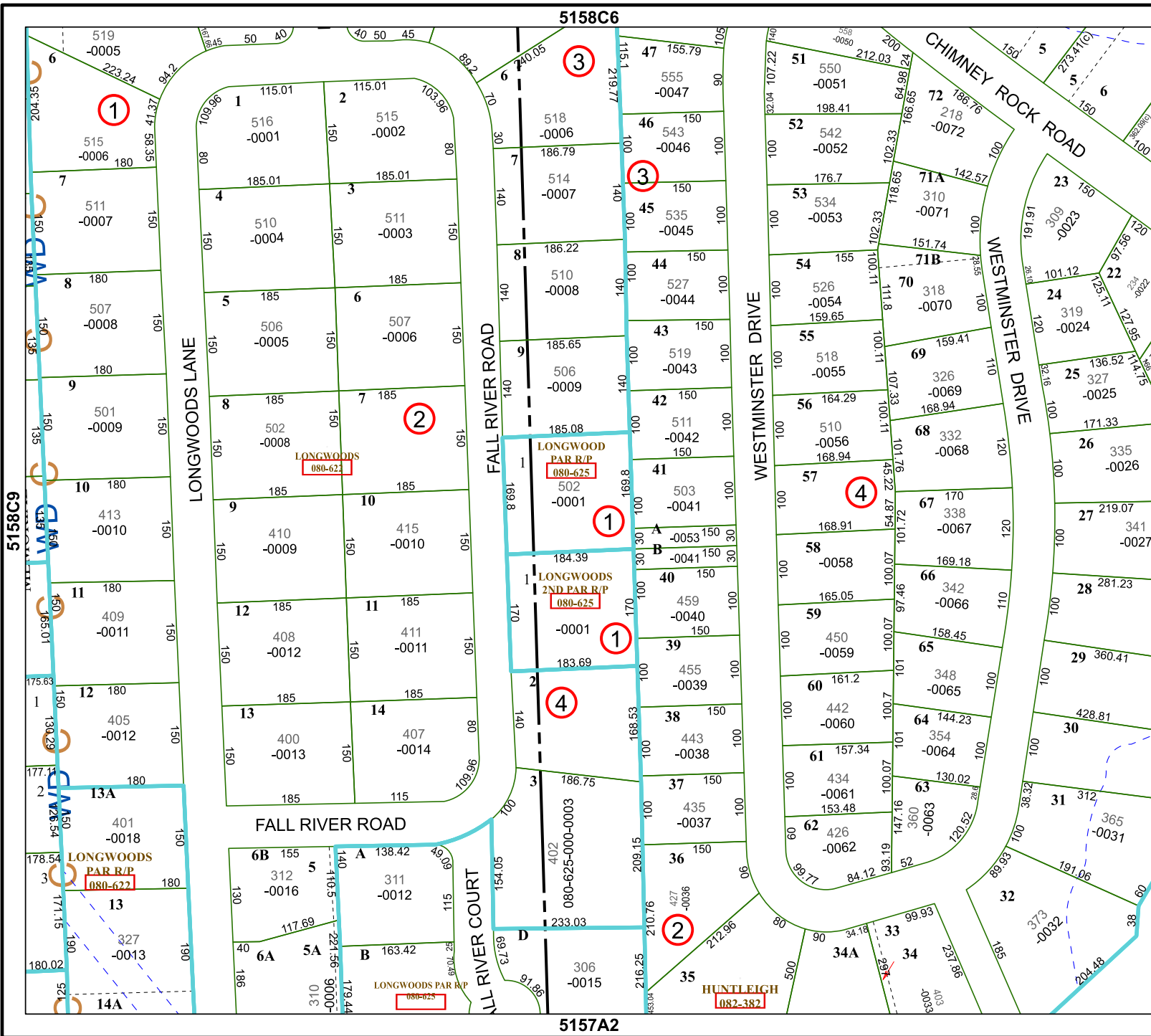


## FACET 5158C10

8	5	6	7	8
12	9	10	11	12
4	1	2	3	4

5158C6

5157A2



1

2

3

3

1

1

4

2

4

LONGWOODS PAR R/P 080-622

LONGWOODS PAR R/P 080-625

LONGWOODS 2ND PAR R/P 080-625

LONGWOODS PAR R/P 080-622

HUNTLEIGH 082-382

LONGWOODS 080-622

LONGWOODS 080-625

LONGWOODS PAR R/P 080-625

LONGWOODS LANE

FALL RIVER ROAD

FALL RIVER ROAD

FALL RIVER COURT

WESTMINSTER DRIVE

CHIMNEY ROCK ROAD

WESTMINSTER DRIVE

5158C9

5158C11