

# Harris Central Appraisal District



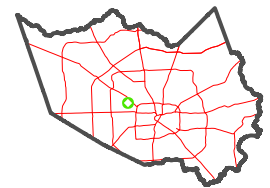
0 45 90 180 Feet

PUBLICATION DATE:  
2/28/2024

Geospatial or map data maintained by the Harris Central Appraisal District is for informational purposes and may not have been prepared for or be suitable for legal, engineering, or surveying purposes. It does not represent an on-the-ground survey and only represents the approximate location of property boundaries.



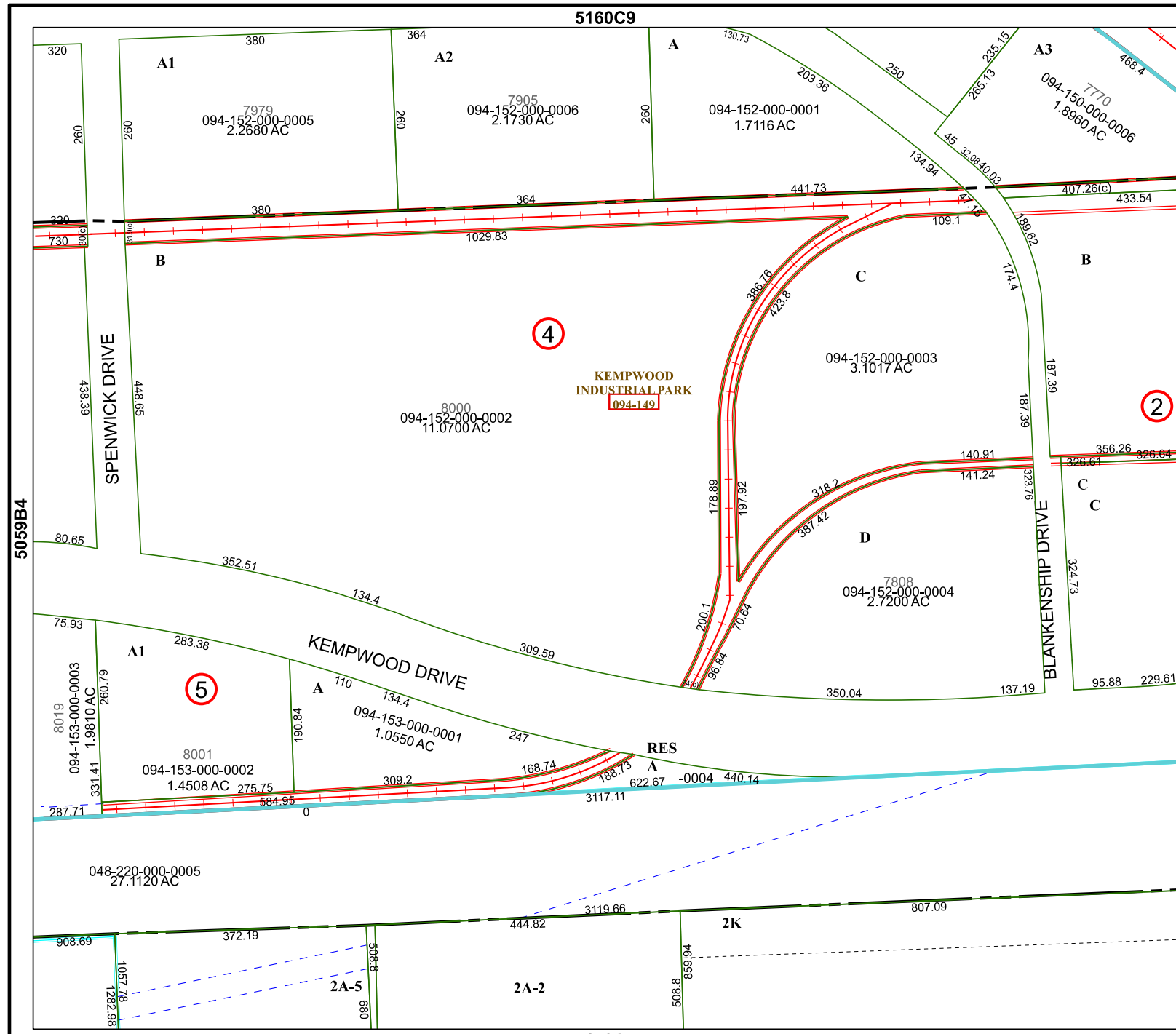
## MAP LOCATION



# FACET 5159A1

11	12	9	10	11
3	4	1	2	3
7	8	5	6	7

5160C9



5159A5

5059B4

5159A2

4

2

5

KEMPWOOD INDUSTRIAL PARK  
094-149

RES

2K

2A-5

2A-2