

# Harris Central Appraisal District

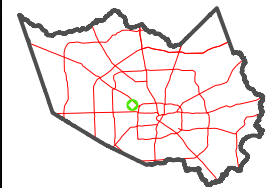


0 45 90 180 Feet

PUBLICATION DATE:  
1/10/2025

Geospatial or map data maintained by the Harris Central Appraisal District is for informational purposes and may not have been prepared for or be suitable for legal, engineering, or surveying purposes. It does not represent an on-the-ground survey and only represents the approximate location of property boundaries.

MAP LOCATION



## FACET

5159A11-11

5	6	7	8	5
9	10	11	12	9
1	2	3	4	1

5159A7

5159C3

THONIG STREET

LENTZ VILLAS

H. P. HERZOG  
SUBDIVISION  
073-057

THONIG STREET

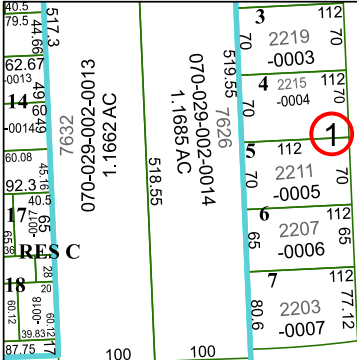
HARLAND DRIVE

CYR STREET

COUNTER POINT DRIVE

WOODVINE DRIVE

LONG  
POINT OAKS  
084-112



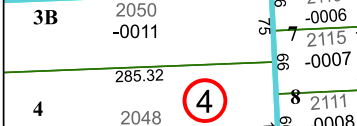
RES K



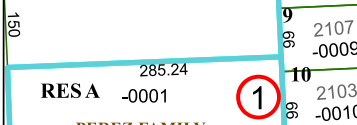
RESA



3B



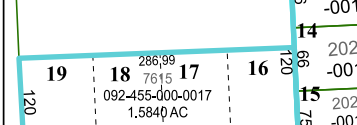
4



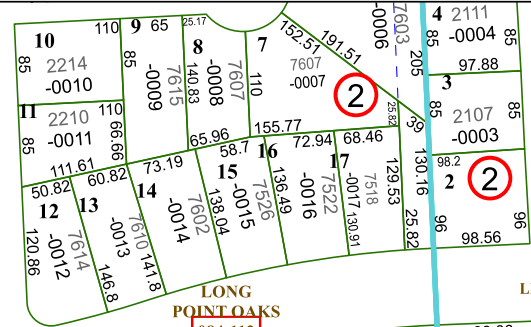
RESA



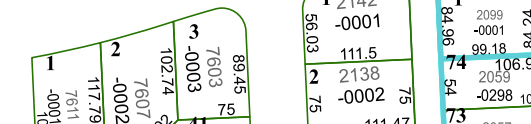
PERE FAMILY  
ESTATES  
132-071



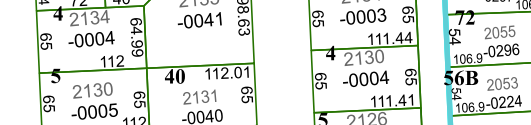
19



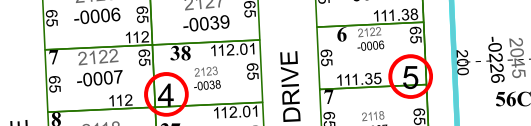
10



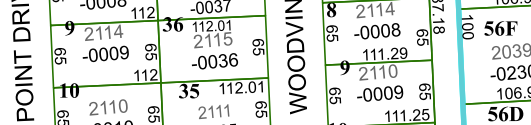
1



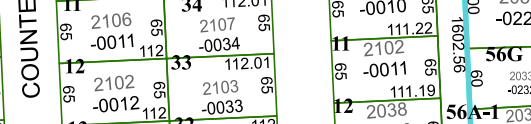
1



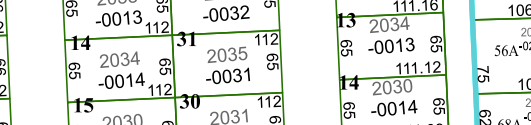
1



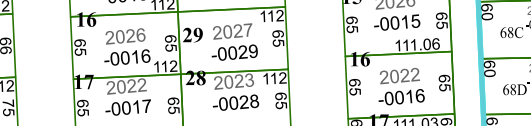
1



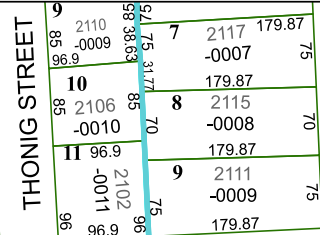
1



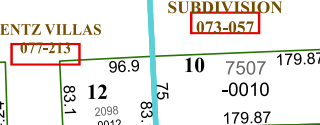
1



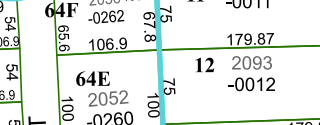
1



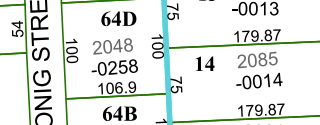
1



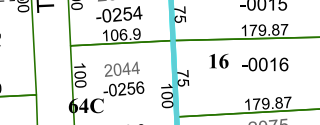
1



1



1



1



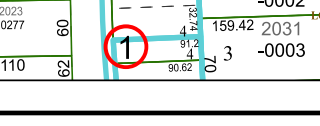
1



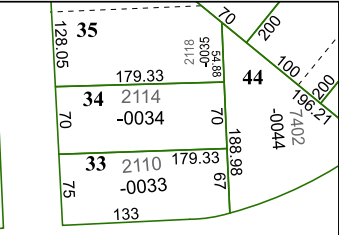
1



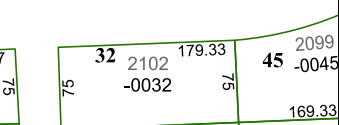
1



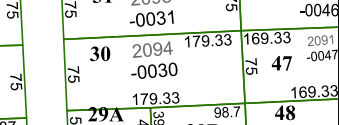
1



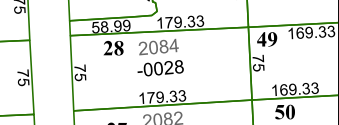
1



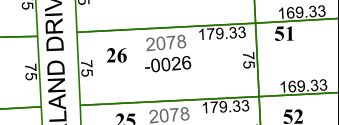
1



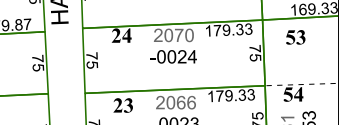
1



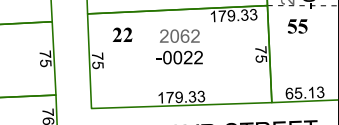
1



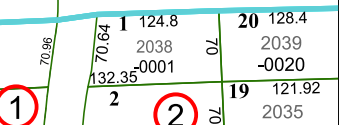
1



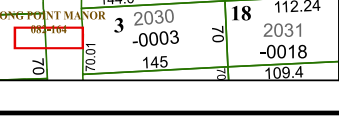
1



1



1



1