

Harris Central Appraisal District



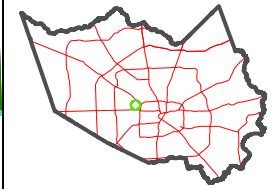
0 45 90 180 Feet

PUBLICATION DATE: 12/30/2023

Geospatial or map data maintained by the Harris Central Appraisal District is for informational purposes and may not have been prepared for or be suitable for legal, engineering, or surveying purposes. It does not represent an on-the-ground survey and only represents the approximate location of property boundaries.



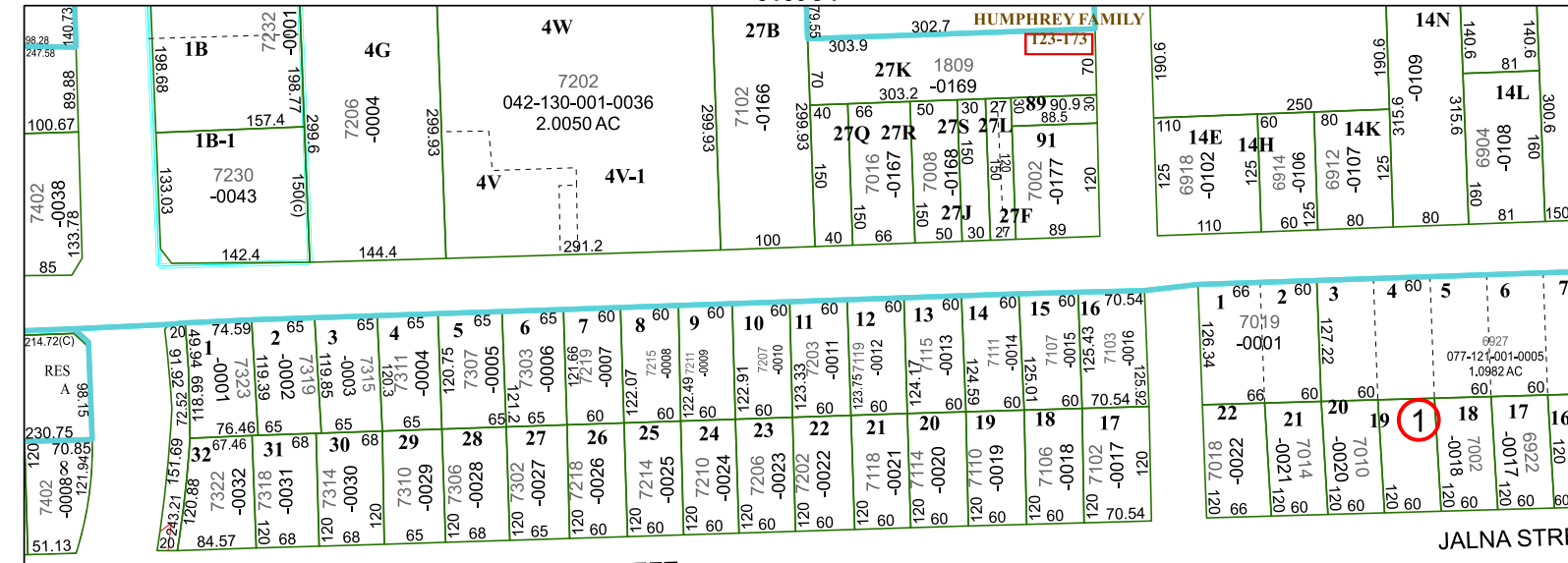
MAP LOCATION



FACET 5159C8

2	3	4	1	2
6	7	8	5	6
10	11	12	9	10

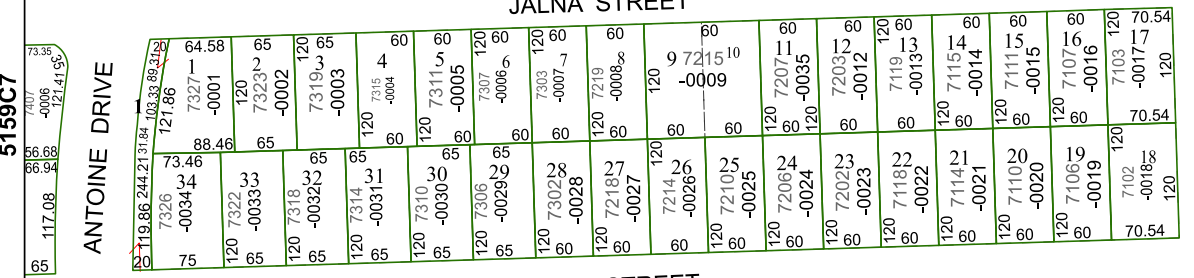
5159C4



JALNA STREET

JALNA STREET

5159C7



ANTOINE DRIVE

RATON STREET

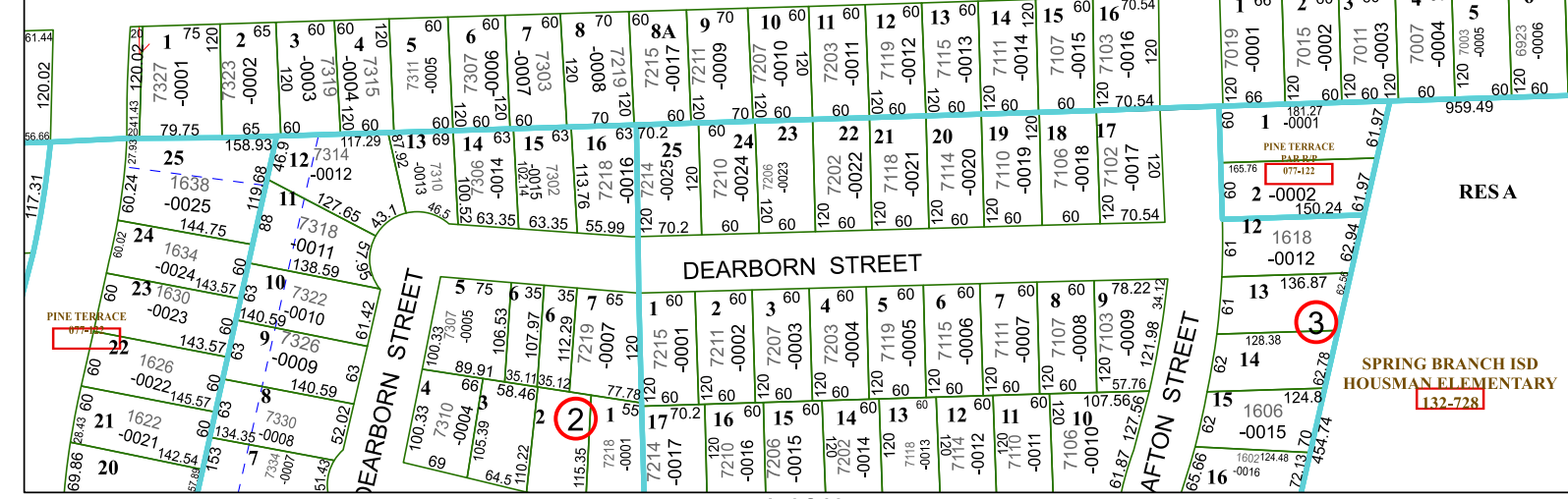
RATON STREET

AFTON STREET

RESA

SPRING BRANCH ISD HOUSMAN ELEMENTARY

5159C12



DEARBORN STREET

AFTON STREET

132-728