

Harris Central Appraisal District

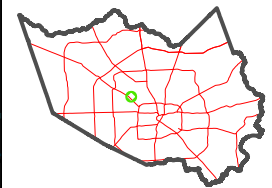


0 45 90 180 Feet

PUBLICATION DATE: 4/8/2024

Geospatial or map data maintained by the Harris Central Appraisal District is for informational purposes and may not be suitable for legal, engineering, or surveying purposes. It does not represent an on-the-ground survey and only represents the approximate location of property boundaries.

MAP LOCATION



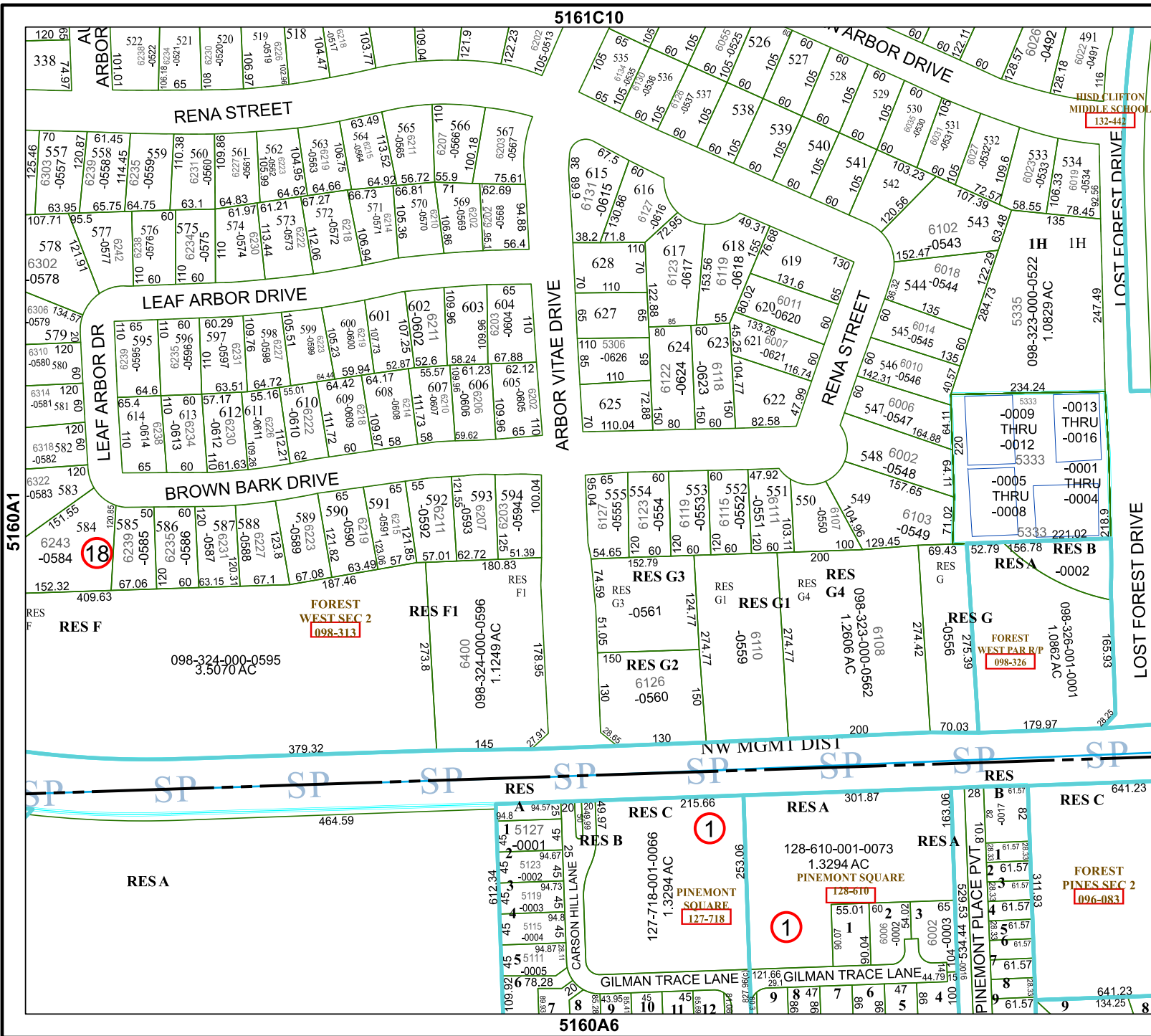
FACET 5160A2

12	9	10	11	12
4	1	2	3	4
8	5	6	7	8

5161C10

ARBOR VITAE DRIVE

5160A6



HUSD CLIFTON MIDDLE SCHOOL 132-441

FOREST WEST SEC 2 098-313

FOREST WEST PAR/P 098-326

PINEMONT SQUARE 127-718

FOREST PINES SEC 2 096-083

18

1

1

