

Harris Central Appraisal District



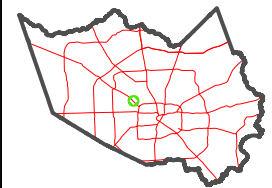
0 45 90 180 Feet

PUBLICATION DATE: 4/22/2024

Geospatial or map data maintained by the Harris Central Appraisal District is for informational purposes and may not be suitable for legal, engineering, or surveying purposes. It does not represent an on-the-ground survey and only represents the approximate location of property boundaries.



MAP LOCATION

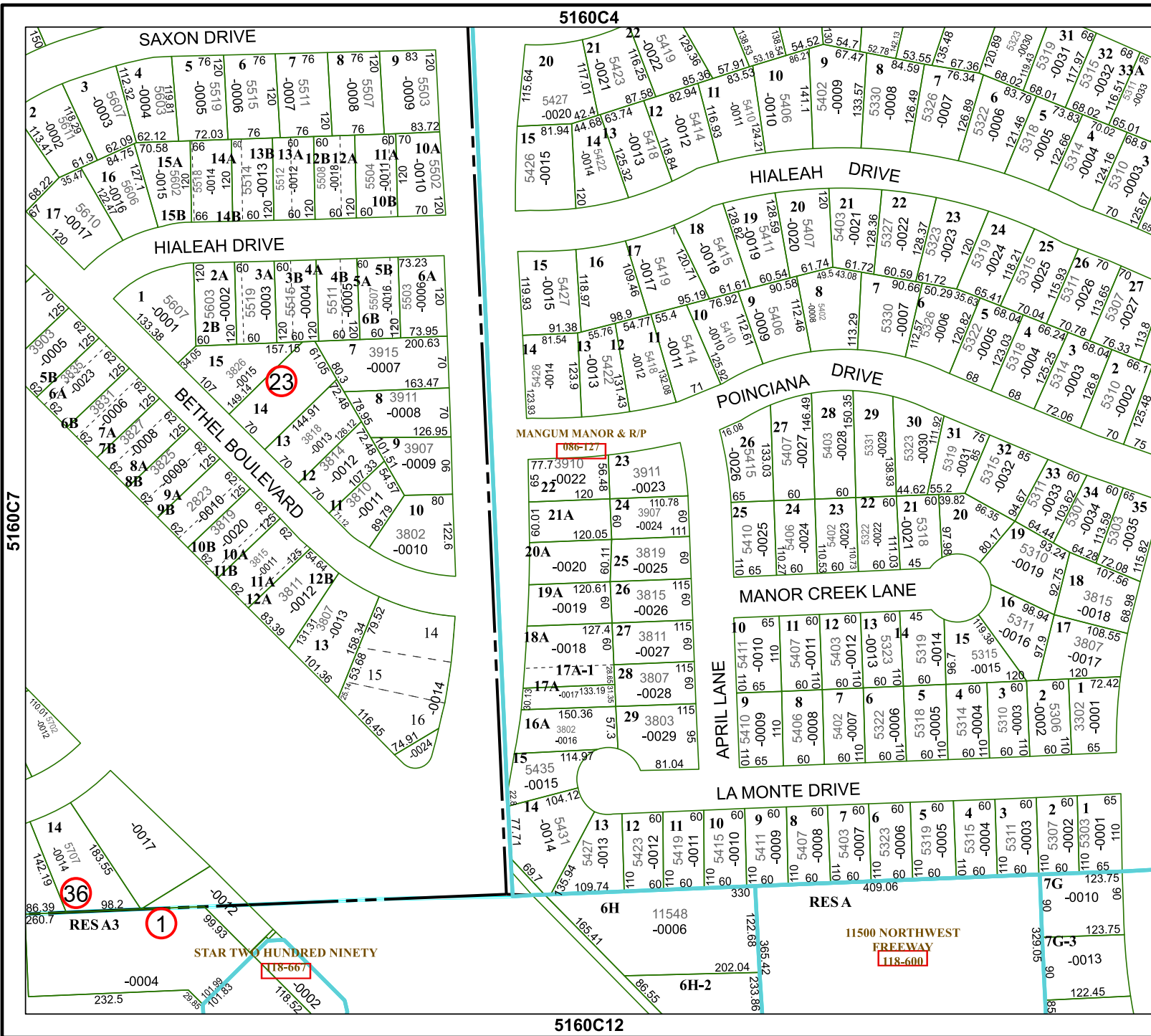


FACET 5160C8

2	3	4	1	2
6	7	8	5	6
10	11	12	9	10

5160C4

5160C12



5160C7

5160D5

36

1

23

118-667

086-127

118-600