

5161A2

Harris Central Appraisal District



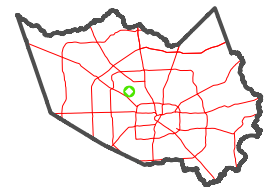
0 45 90 180 Feet

PUBLICATION DATE:
1/17/2023

Geospatial or map data maintained by the Harris Central Appraisal District is for informational purposes and may not have been prepared for or be suitable for legal, engineering, or surveying purposes. It does not represent an on-the-ground survey and only represents the approximate location of property boundaries.



MAP LOCATION



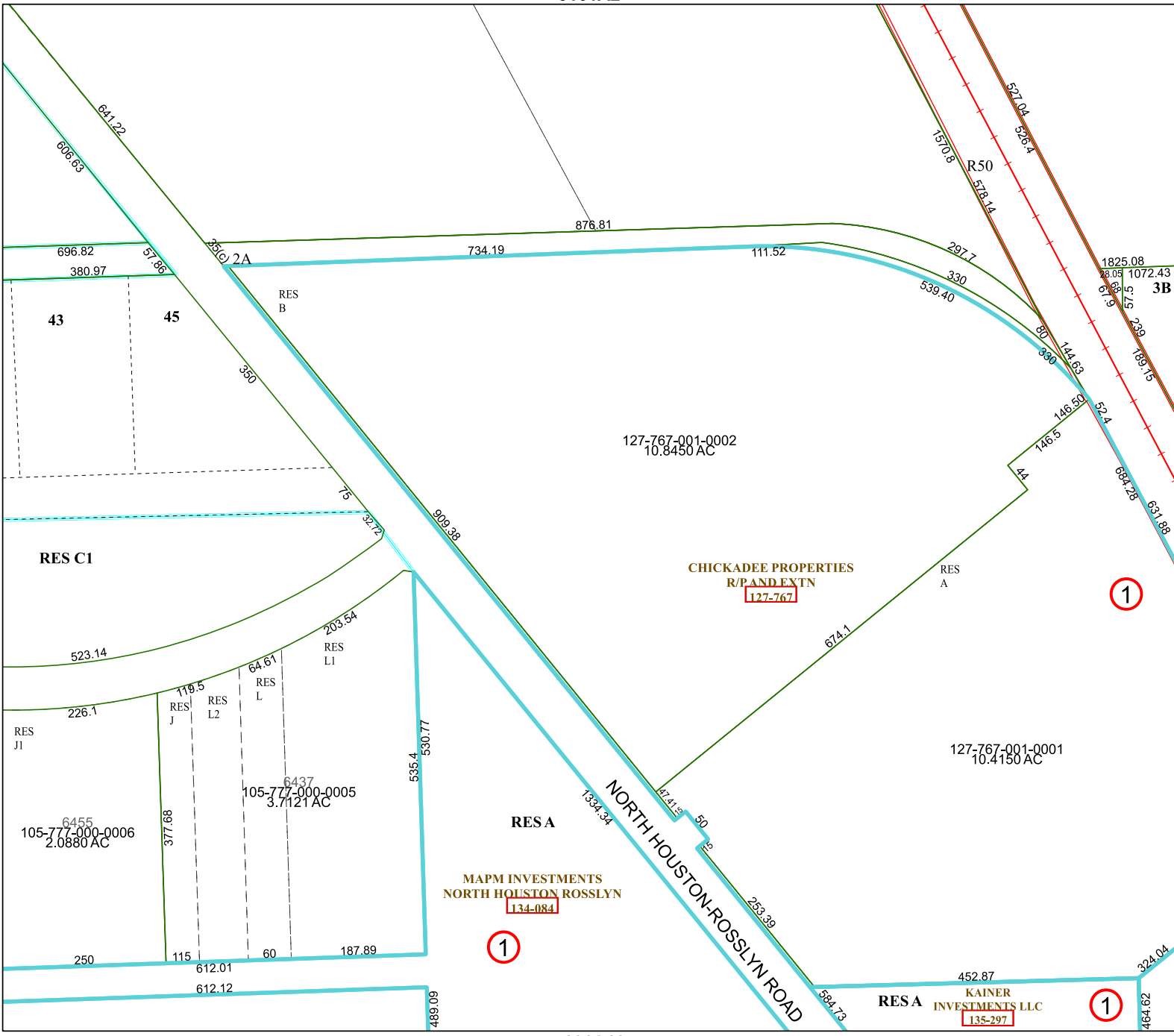
FACET 5161A6

4	1	2	3	4
8	5	6	7	8
12	9	10	11	12

5161A5

5161A7

5161A10



127-767-001-0002
10.8450 AC

CHICKADEE PROPERTIES
R/P AND EXTN
127-767

127-767-001-0001
10.4150 AC

MAPM INVESTMENTS
NORTH HOUSTON ROSSLYN
134-084

RESA KAINER INVESTMENTS LLC
135-297

1

1

1