

5162D12

Harris Central Appraisal District

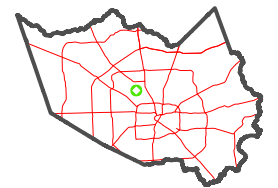


0 45 90 180 Feet

PUBLICATION DATE: 5/6/2024

Geospatial or map data maintained by the Harris Central Appraisal District is for informational purposes and may not be suitable for legal, engineering, or surveying purposes. It does not represent an on-the-ground survey and only represents the approximate location of property boundaries.

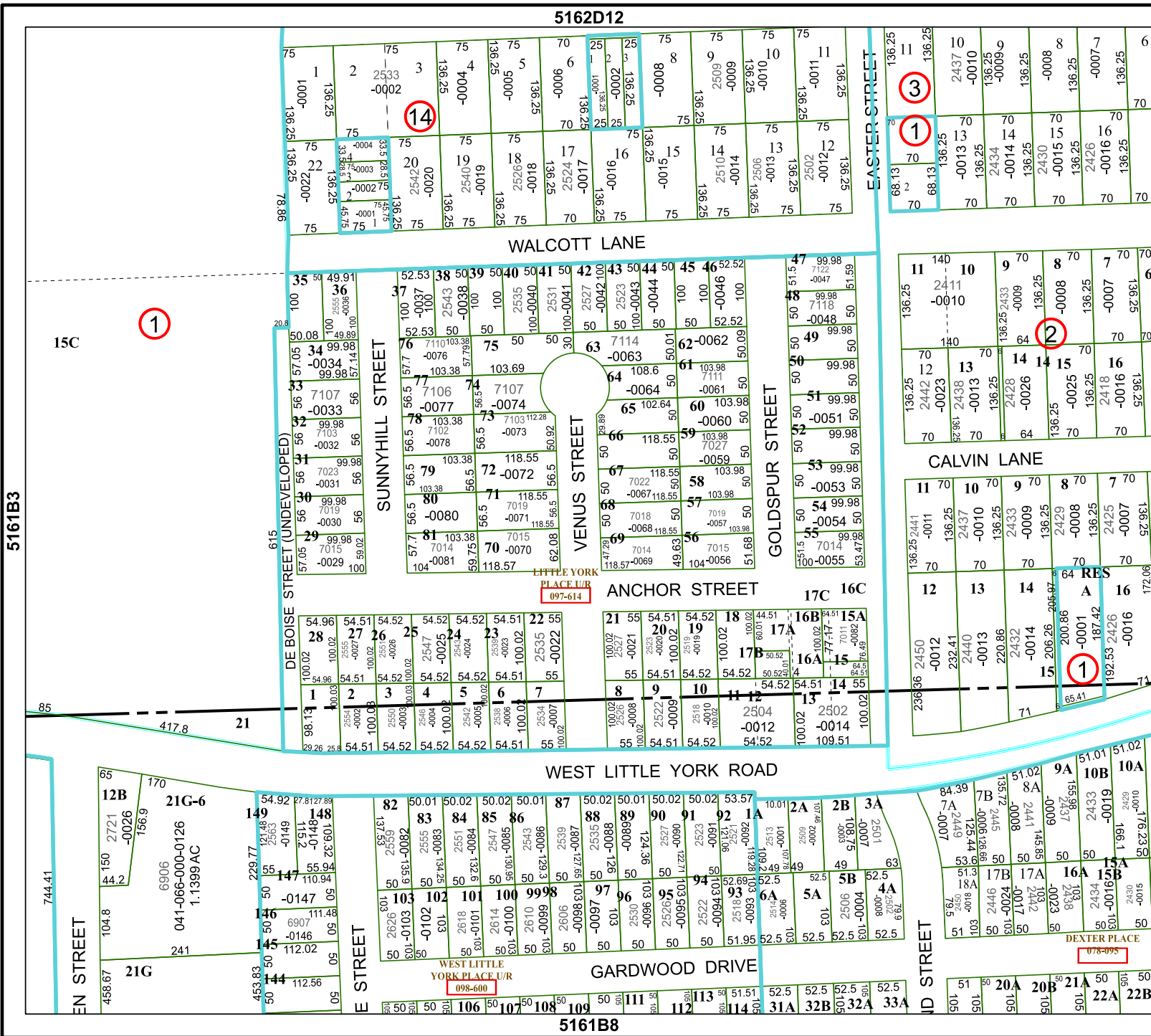
MAP LOCATION



FACET 5161B4

10	11	12	9	10
2	3	4	1	2
6	7	8	5	6

5161B8



5161B3

15C

85

744.41

EN STREET

21G

458.67

1

14

3

1

2

1

