

Harris Central Appraisal District

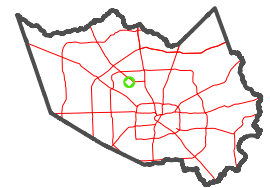


0 45 90 180 Feet

PUBLICATION DATE: 1/6/2023

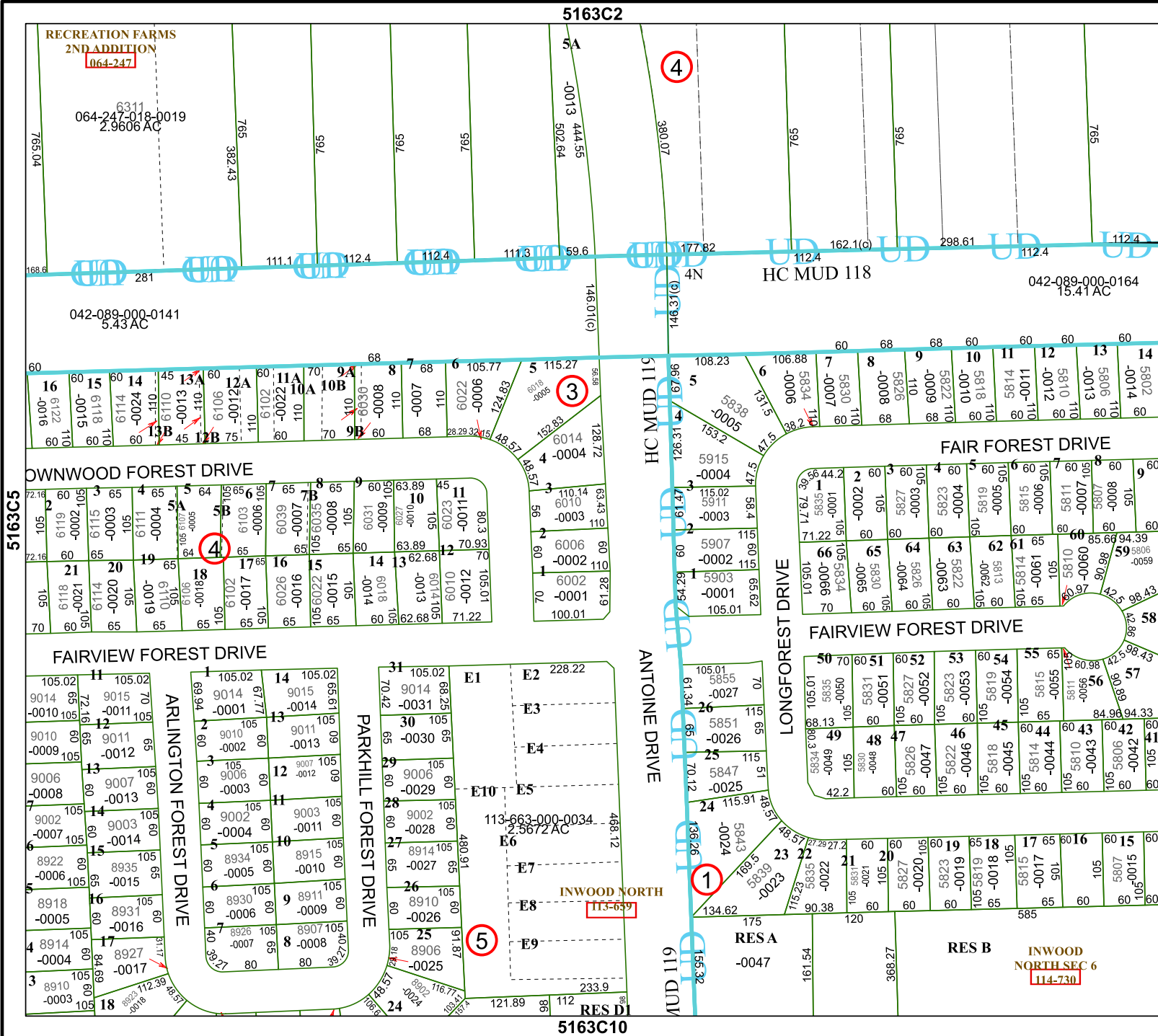
Geospatial or map data maintained by the Harris Central Appraisal District is for informational purposes and may not have been prepared for or be suitable for legal, engineering, or surveying purposes. It does not represent an on-the-ground survey and only represents the approximate location of property boundaries.

MAP LOCATION



FACET 5163C6

4	1	2	3	4
8	5	6	7	8
12	9	10	11	12



5163C5

5163C2

5163C10

5163C7

5163C6