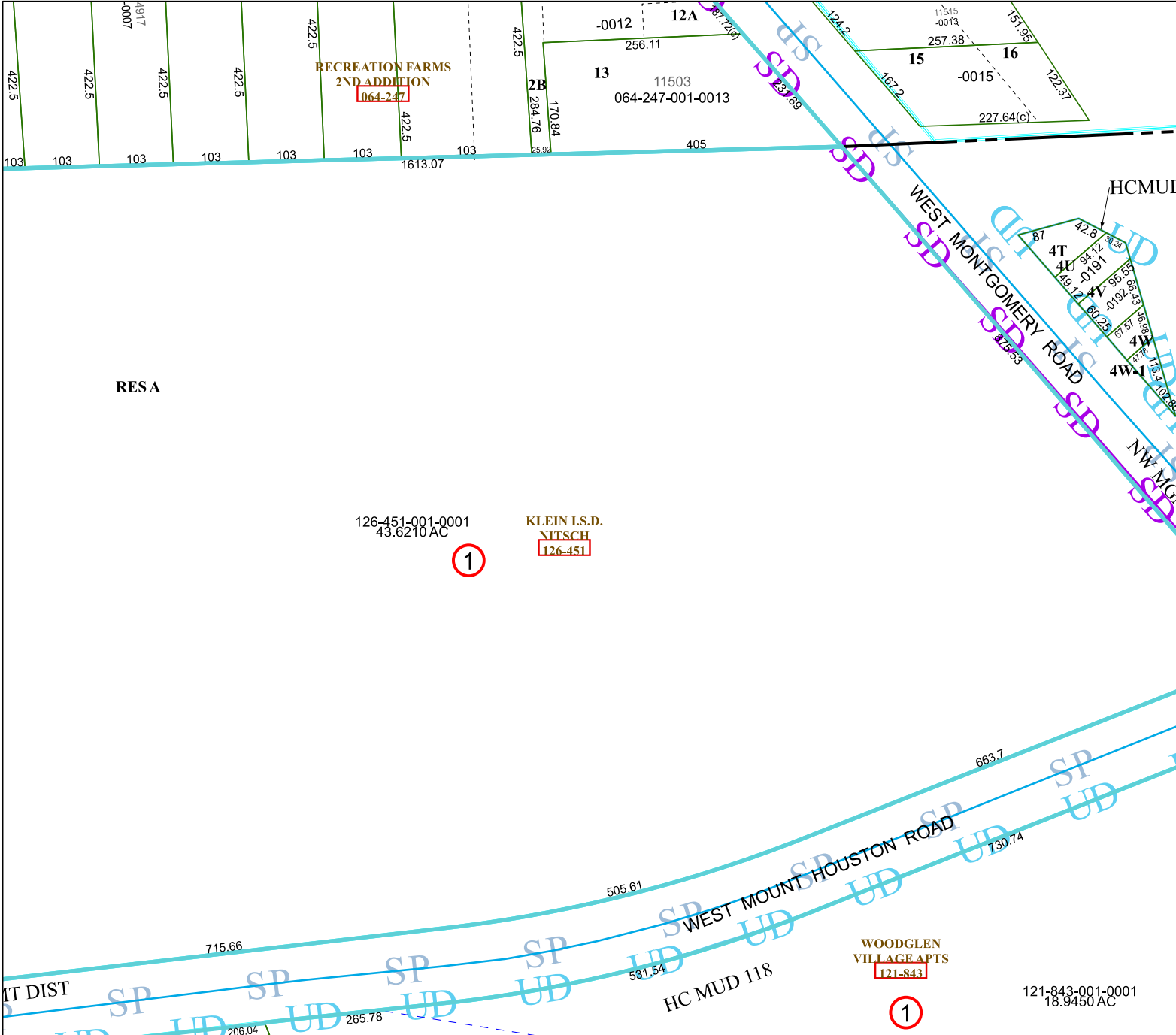


5163D1



Harris Central Appraisal District



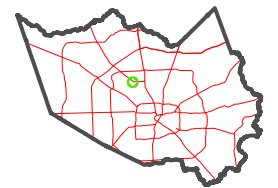
0 45 90 180 Feet

PUBLICATION DATE: 1/6/2023

Geospatial or map data maintained by the Harris Central Appraisal District is for informational purposes and may not have been prepared for or be suitable for legal, engineering, or surveying purposes. It does not represent an on-the-ground survey and only represents the approximate location of property boundaries.



MAP LOCATION



FACET 5163D5

3	4	1	2	3
7	8	5	6	7
11	12	9	10	11

5163D9

5163D6

5163C8

RESA

126-451-001-0001
43.6210 AC

1

KLEIN I.S.D.
NITSCH
126-451

WOODGLEN
VILLAGE APTS
121-843

1

121-843-001-0001
18.9450 AC

HC MUD 118

HCMUD

MT DIST