

# Harris Central Appraisal District

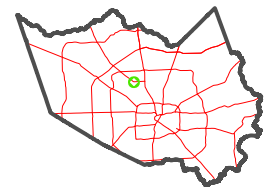


0 45 90 180 Feet

PUBLICATION DATE: 12/30/2023

Geospatial or map data maintained by the Harris Central Appraisal District is for informational purposes and may not have been prepared for or be suitable for legal, engineering, or surveying purposes. It does not represent an on-the-ground survey and only represents the approximate location of property boundaries.

MAP LOCATION



## FACET 5163D6

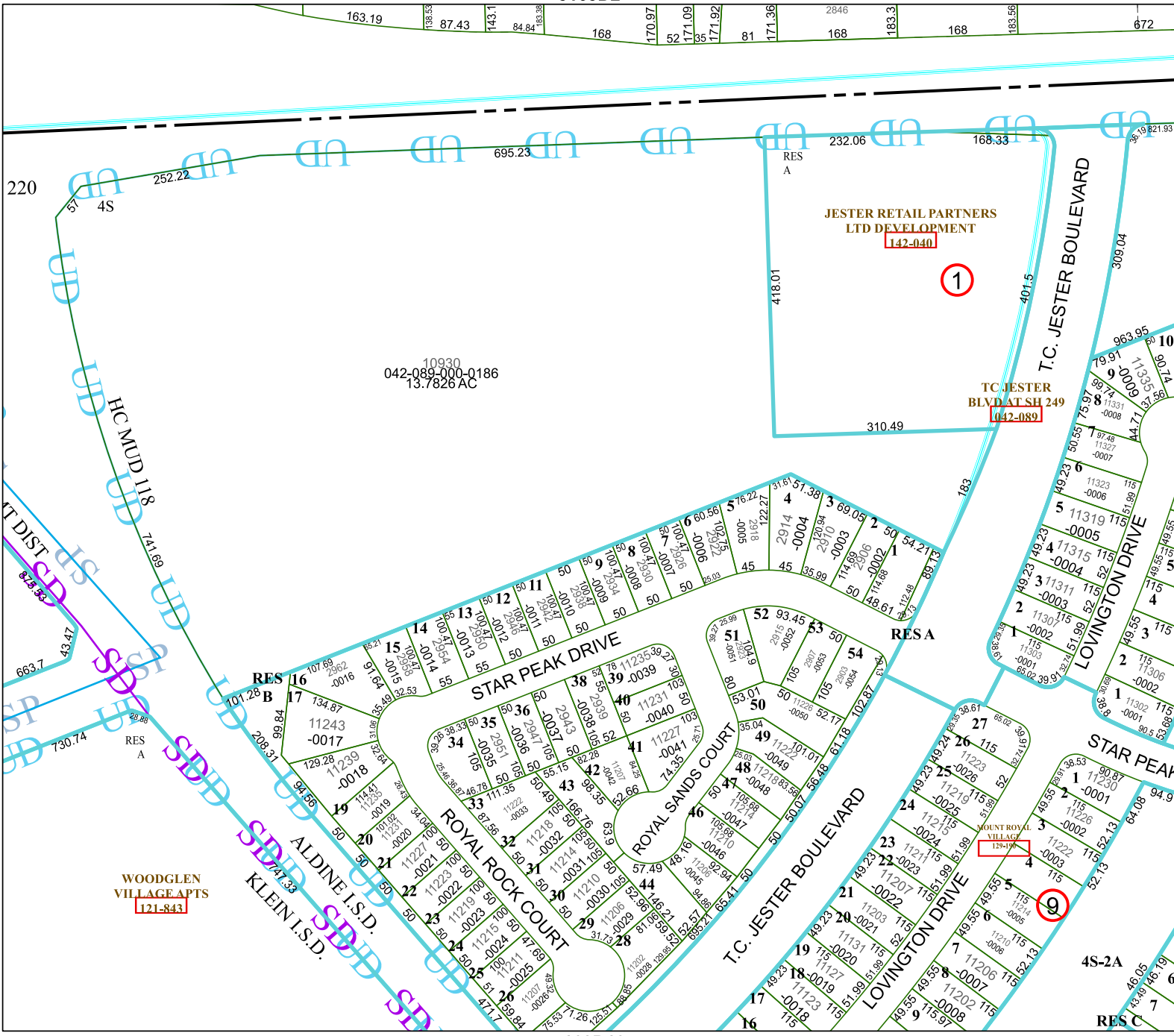
4	1	2	3	4
8	5	6	7	8
12	9	10	11	12

5163D2

JESTER RETAIL PARTNERS LTD DEVELOPMENT  
142-040

1

TC JESTER BLVD AT SH 249  
142-089



5163D10

WOODGLEN VILLAGE APTS  
121-843

4S-2A

RES C