

5164D2

3B

048-154-000-0035
7.4890 AC

048-154-000-0020
10.0495 AC

2E

7A

1138.37 965

2A

6

6A

048-222-000-0067
10.7762 AC

1D

1B

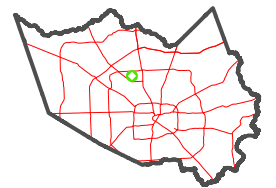
0 45 90 180 Feet

PUBLICATION DATE:
12/30/2023

Geospatial or map data maintained by the Harris Central Appraisal District is for informational purposes and may not have been prepared for or be suitable for legal, engineering, or surveying purposes. It does not represent an on-the-ground survey and only represents the approximate location of property boundaries.



MAP LOCATION



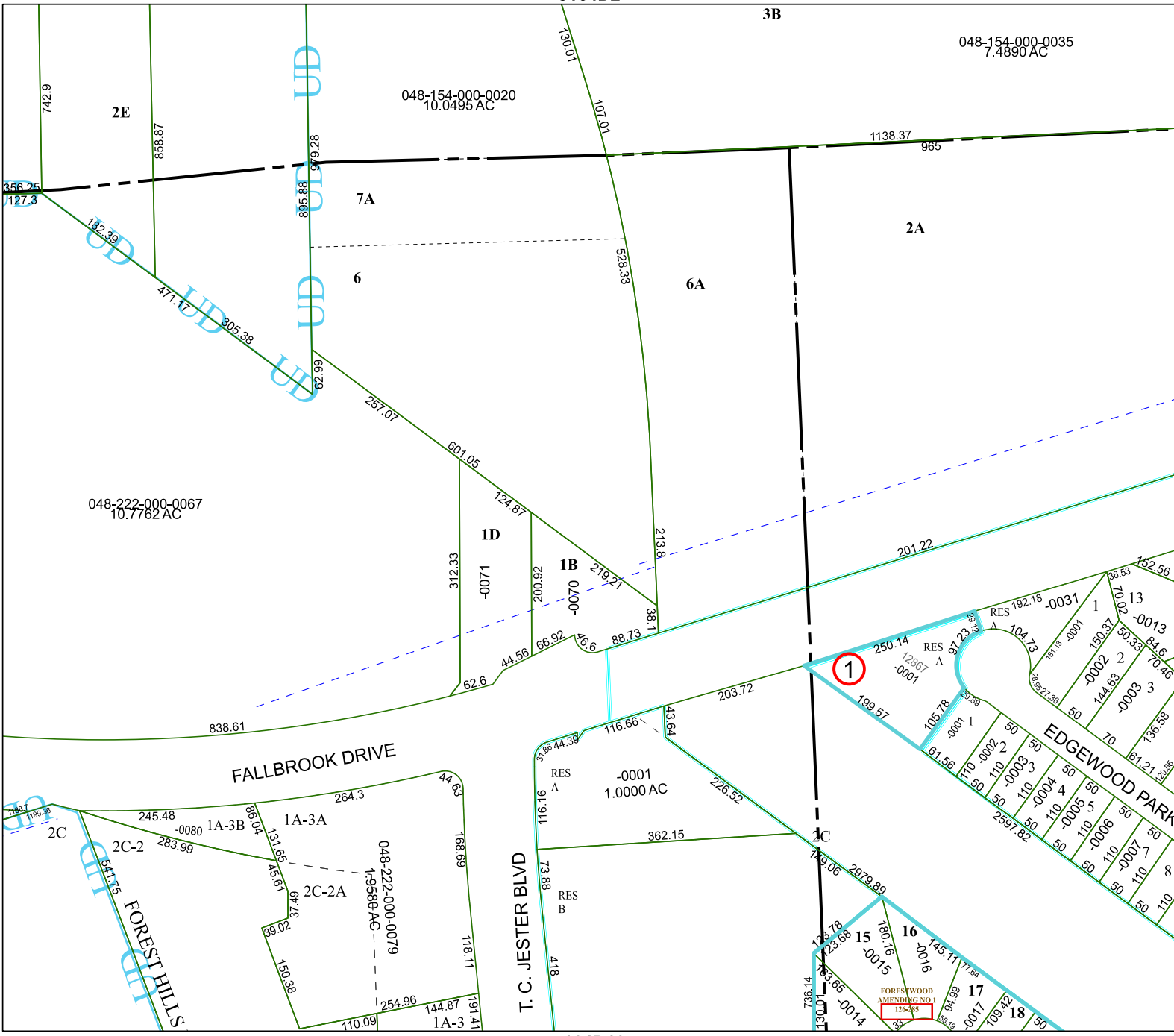
FACET
5164D6

4	1	2	3	4
8	5	6	7	8
12	9	10	11	12

5164D5

5164D7

5164D10



Map details including lot numbers (e.g., 1A-3A, 2C-2A, 15, 16, 17, 18), acreage values (e.g., 1.0000 AC, 1.9589 AC), and street names (FALLBROOK DRIVE, T. C. JESTER BLVD, EDGEWOOD PARK).

