

5165C1

5165C9

# Harris Central Appraisal District



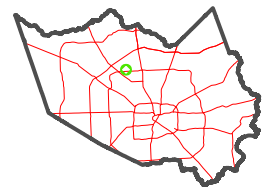
0 45 90 180 Feet

PUBLICATION DATE: 2/13/2024

Geospatial or map data maintained by the Harris Central Appraisal District is for informational purposes and may not have been prepared for or be suitable for legal, engineering, or surveying purposes. It does not represent an on-the-ground survey and only represents the approximate location of property boundaries.

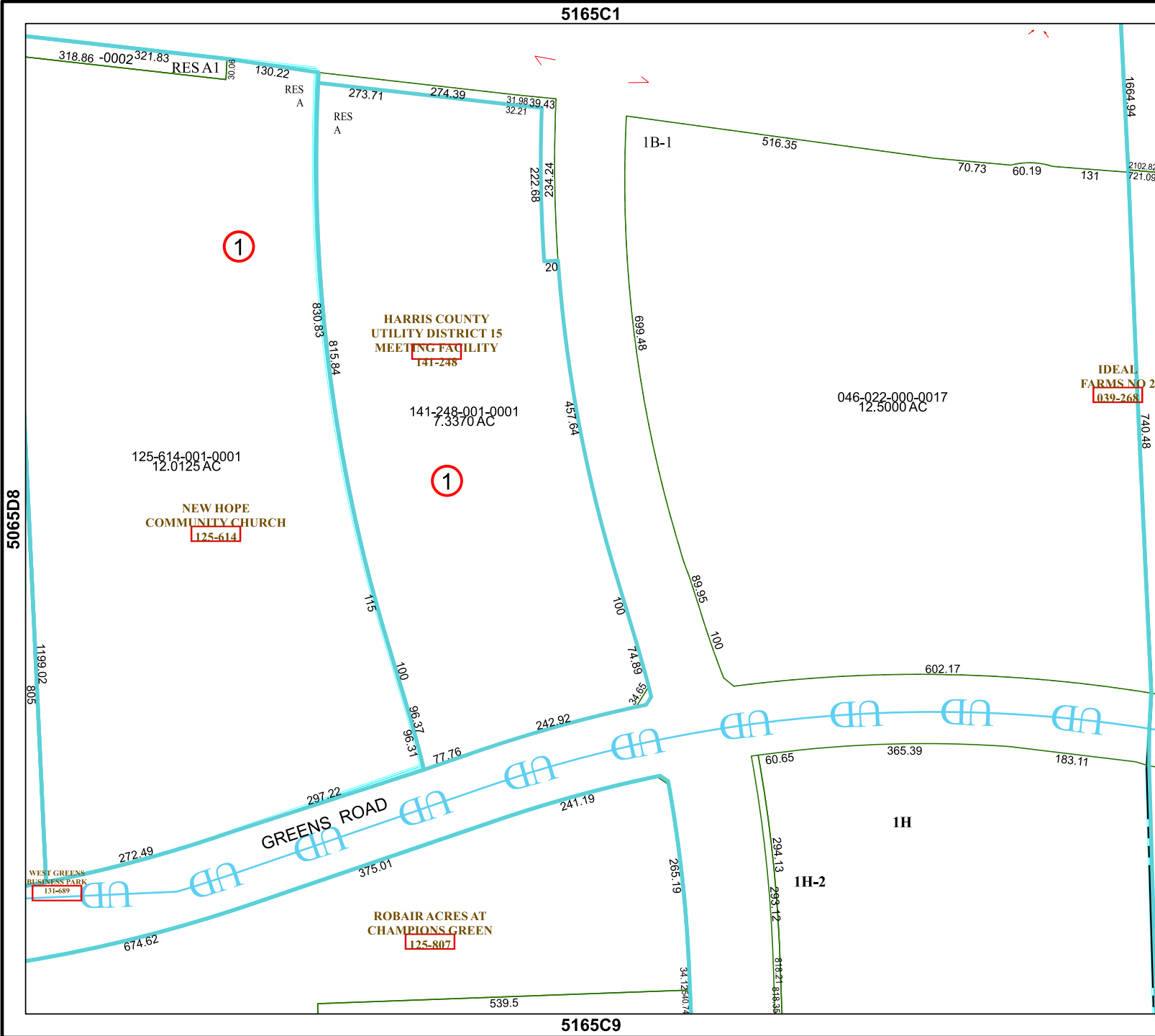


### MAP LOCATION



## FACET 5165C5

3	4	1	2	3
7	8	5	6	7
11	12	9	10	11



1

1

HARRIS COUNTY UTILITY DISTRICT 15 MEETING FACILITY 141-248

141-248-001-0001 7.3370 AC

125-614-001-0001 12.0125 AC

NEW HOPE COMMUNITY CHURCH 125-614

ROBAIR ACRES AT CHAMPIONS GREEN 125-807

046-022-000-0017 12.5000 AC

IDEAL FARMS NO 2 039-268

WEST GREENS BUSINESS PARK 131-689

5065D8

5165C6