

5165C5

RES A2

1H

# Harris Central Appraisal District



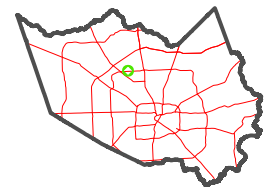
0 45 90 180 Feet

PUBLICATION DATE:  
2/13/2024

Geospatial or map data maintained by the Harris Central Appraisal District is for informational purposes and may not have been prepared for or be suitable for legal, engineering, or surveying purposes. It does not represent an on-the-ground survey and only represents the approximate location of property boundaries.



MAP LOCATION



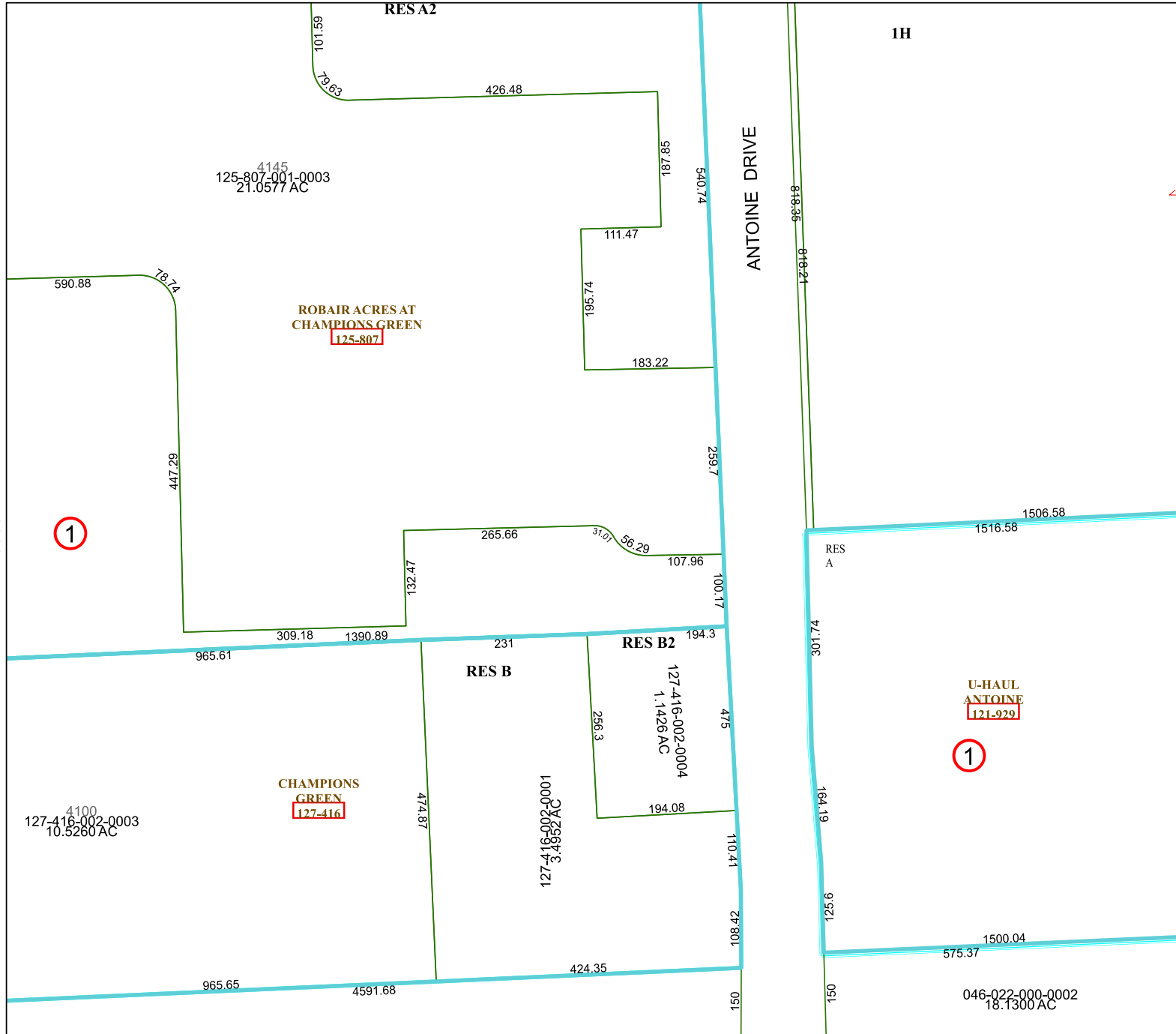
## FACET 5165C9

7	8	5	6	7
11	12	9	10	11
3	4	1	2	3

5164A1

5065D12

5165C10



1

1