

Harris Central Appraisal District

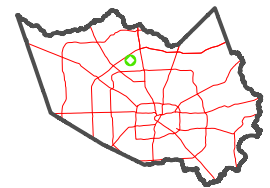


0 45 90 180 Feet

PUBLICATION DATE:
4/22/2024

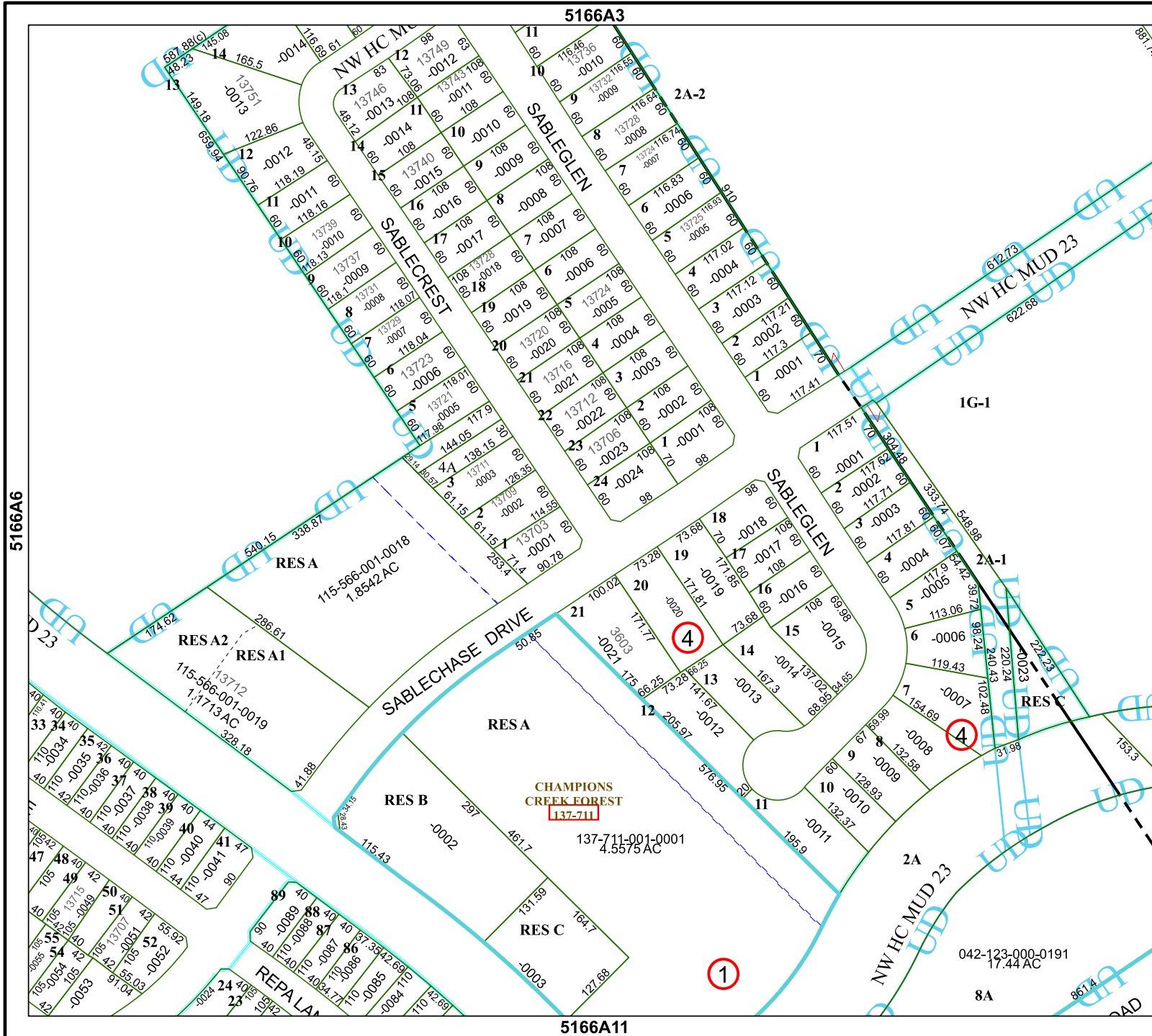
Geospatial or map data maintained by the Harris Central Appraisal District is for informational purposes and may not have been prepared for or be suitable for legal, engineering, or surveying purposes. It does not represent an on-the-ground survey and only represents the approximate location of property boundaries.

MAP LOCATION



FACET 5166A7

1	2	3	4	1
5	6	7	8	5
9	10	11	12	9



5166A3

5166A11

5166A6

5166A8

1

8A

1G-1

2A-1

2A

2A-2

NW HC MUD 23

NW HC MUD 23

8A

042-123-000-0191
17.44 AC

RESA

RESA

RESA

RESA

RESA

RESA

RESA

RESA

RESA

RESA

RESA

RESA

RESA

RESA

RESA

RESA

RESA

RESA

RESA

RESA

RESA

RESA

RESA

RESA

RESA

RESA

RESA

RESA

RESA

RESA

RESA

RESA

RESA

RESA

RESA

RESA

RESA

RESA

RESA

RESA

RESA

RESA