

5167C7

Harris Central Appraisal District



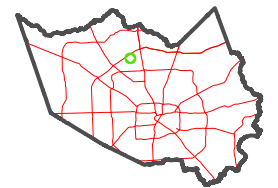
0 45 90 180 Feet

PUBLICATION DATE:
5/6/2024

Geospatial or map data maintained by the Harris Central Appraisal District is for informational purposes and may not have been prepared for or be suitable for legal, engineering, or surveying purposes. It does not represent an on-the-ground survey and only represents the approximate location of property boundaries.



MAP LOCATION



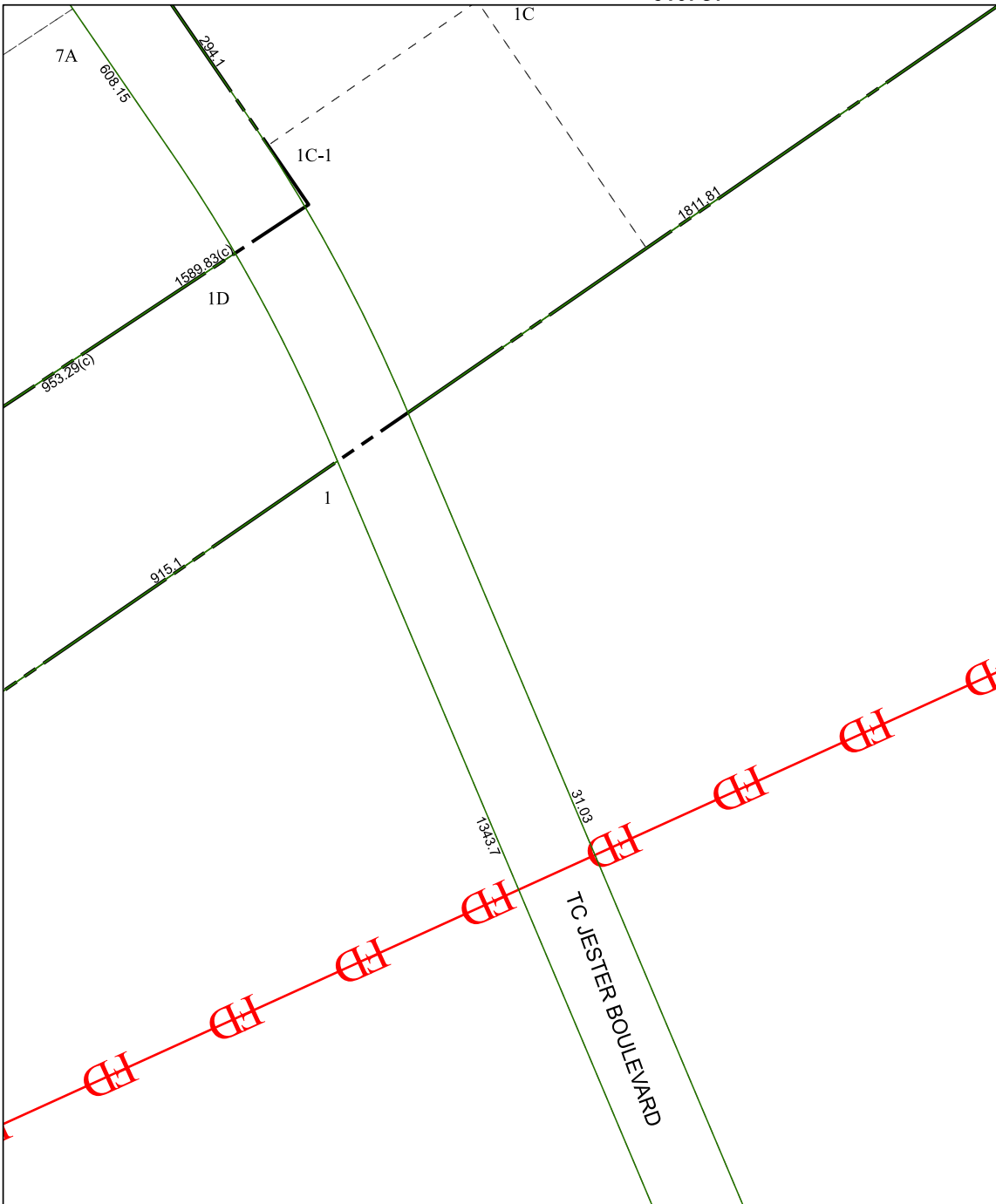
FACET 5167C11

5	6	7	8	5
9	10	11	12	9
1	2	3	4	1

5166A3

5167C10

5167C12



7A

608.15

1589.83(c)

1D

915.1

1

1348.7

31.03

TC JESTER BOULEVARD

1C

1811.81

953.29(c)