

Harris Central Appraisal District

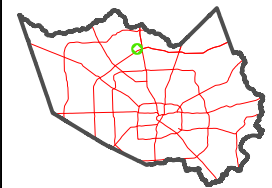


0 45 90 180 Feet

PUBLICATION DATE: 2/28/2024

Geospatial or map data maintained by the Harris Central Appraisal District is for informational purposes and may not have been prepared for or be suitable for legal, engineering, or surveying purposes. It does not represent an on-the-ground survey and only represents the approximate location of property boundaries.

MAP LOCATION

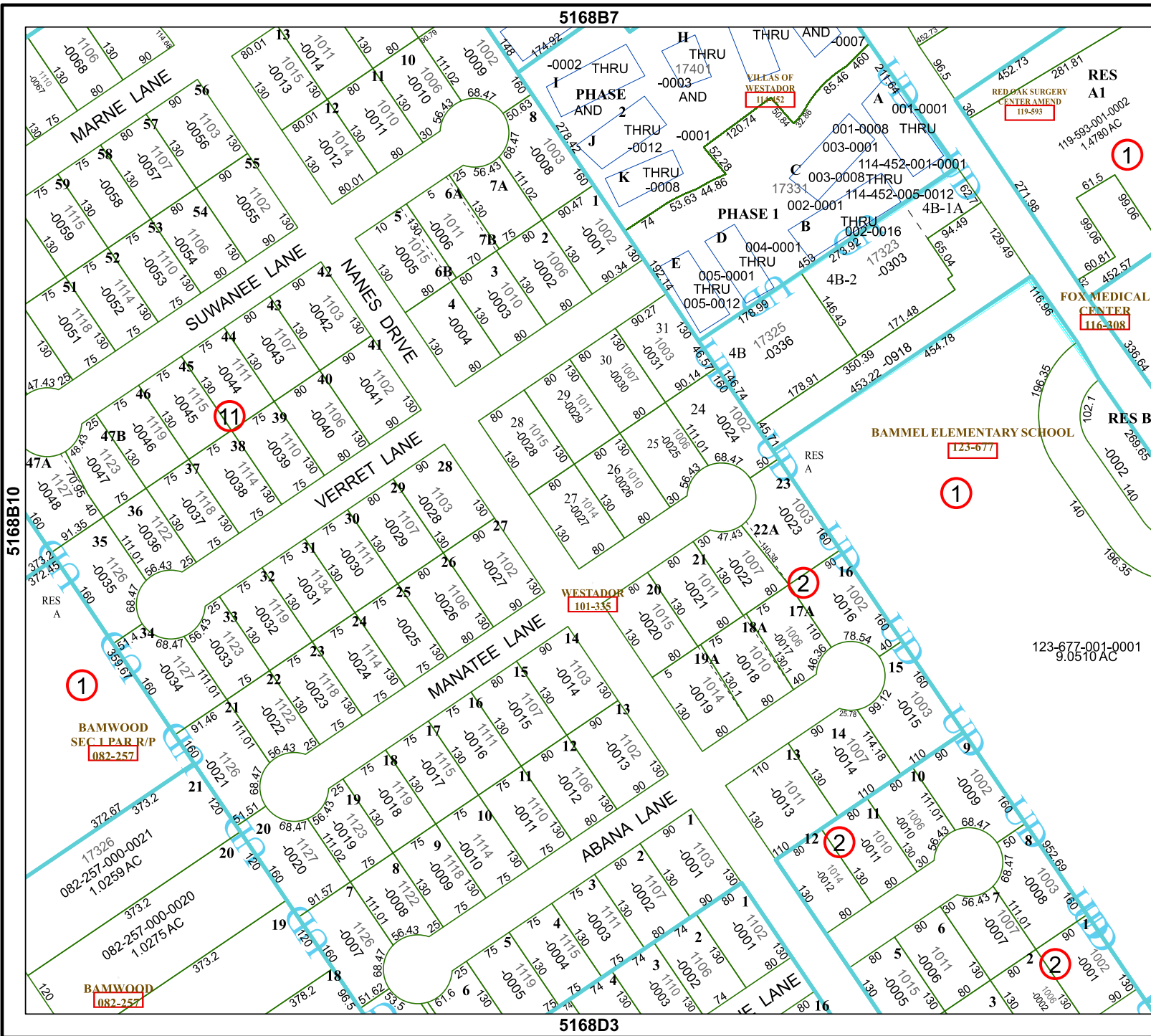


FACET 5168B11

5	6	7	8	5
9	10	11	12	9
1	2	3	4	1

5168B7

5168D3



1

11

1

2

123-677-001-0001
9.0510 AC

BAMWOOD SEC 1 PAR R/P
082-257
082-257-000-0021
1.0259 AC

BAMWOOD
082-257
082-257-000-0020
1.0275 AC

WESTADOR
101-315

BAMMEL ELEMENTARY SCHOOL
123-677

FOX MEDICAL CENTER
116-308

RED OAK SURGERY CENTER AMEND
119-893

PHILAS OF WESTADOR PHASE 2

PHASE 1 AND 2
THRU AND
-0002 THRU
-0003 AND
-0001 THRU
-0012
-0008

PHASE 1
THRU
004-0001 THRU
005-0012

PHASE 1
THRU
002-0001 THRU
002-0016

PHASE 1
THRU
005-0012 THRU
005-0012

PHASE 1
THRU
005-0012 THRU
005-0012

PHASE 1
THRU
005-0012 THRU
005-0012

PHASE 1
THRU
005-0012 THRU
005-0012

PHASE 1
THRU
005-0012 THRU
005-0012

PHASE 1
THRU
005-0012 THRU
005-0012

PHASE 1
THRU
005-0012 THRU
005-0012

PHASE 1
THRU
005-0012 THRU
005-0012

PHASE 1
THRU
005-0012 THRU
005-0012

PHASE 1
THRU
005-0012 THRU
005-0012

PHASE 1
THRU
005-0012 THRU
005-0012

PHASE 1
THRU
005-0012 THRU
005-0012

PHASE 1
THRU
005-0012 THRU
005-0012

PHASE 1
THRU
005-0012 THRU
005-0012

PHASE 1
THRU
005-0012 THRU
005-0012

PHASE 1
THRU
005-0012 THRU
005-0012