

5168D4

Harris Central Appraisal District



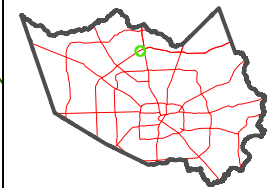
0 45 90 180 Feet

PUBLICATION DATE: 1/6/2023

Geospatial or map data maintained by the Harris Central Appraisal District is for informational purposes and may not have been prepared for or be suitable for legal, engineering, or surveying purposes. It does not represent an on-the-ground survey and only represents the approximate location of property boundaries.



MAP LOCATION



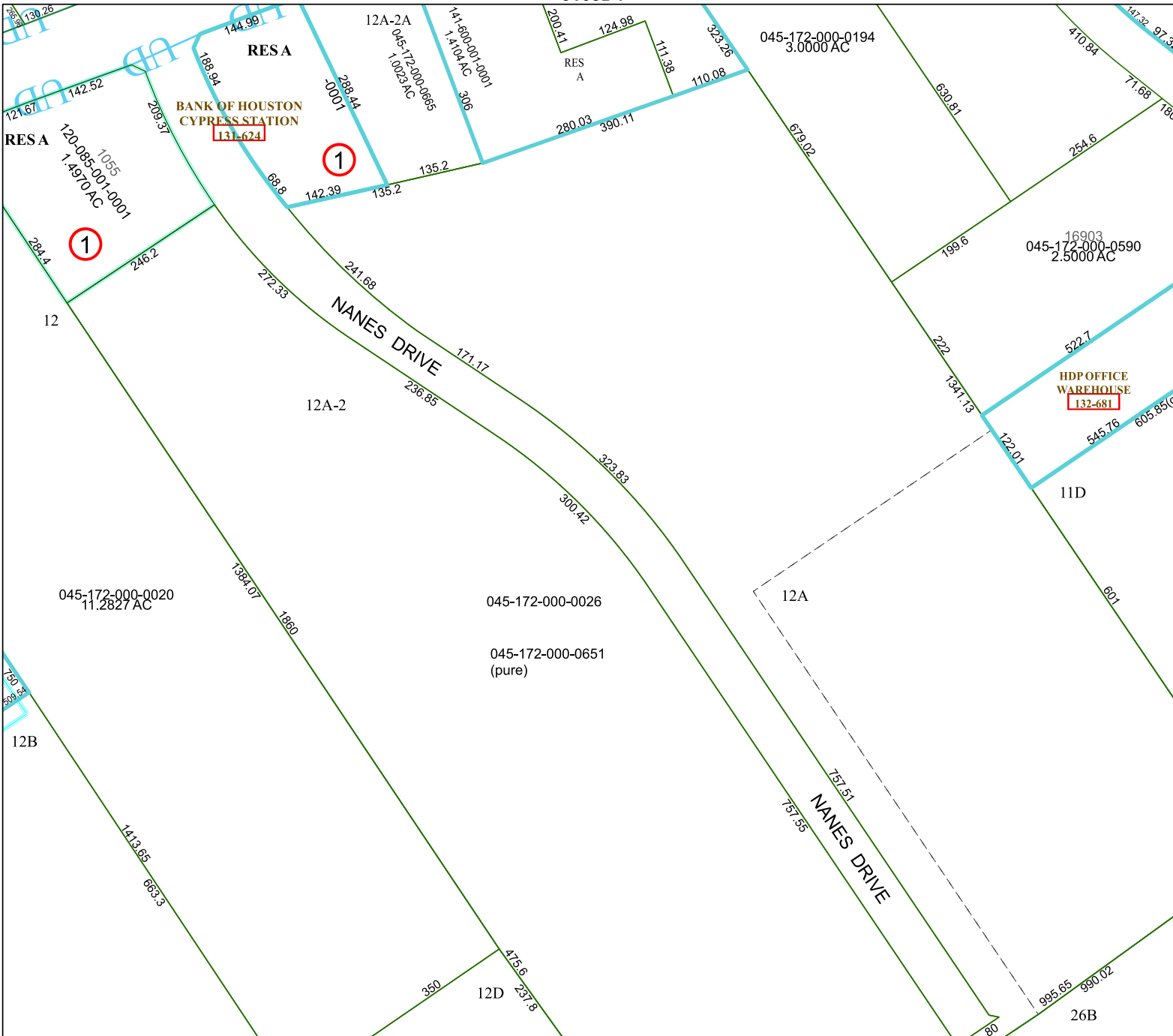
FACET 5168D8

2	3	4	1	2
6	7	8	5	6
10	11	12	9	10

5168D12

5168D7

5268C5



BANK OF HOUSTON CYPRESS STATION 131-624

HDP OFFICE WAREHOUSE 132-681

1

1

12A-2

12A

11D

RESA

RESA

5168D4

5168D12

NANES DRIVE

NANES DRIVE

RESA

RESA

5168D4

5168D12

12A-2

12A

11D

RESA

RESA

5168D4

5168D12

NANES DRIVE

NANES DRIVE

RESA

RESA

5168D4

5168D12

12A-2

12A

11D

RESA

RESA

5168D4

5168D12

NANES DRIVE

NANES DRIVE

RESA

RESA

5168D4

5168D12

12A-2

12A

11D

RESA

RESA

5168D4

5168D12

NANES DRIVE

NANES DRIVE

RESA

RESA

5168D4

5168D12

12A-2

12A

11D

RESA

RESA

5168D4

5168D12

NANES DRIVE

NANES DRIVE

RESA

RESA

5168D4

5168D12

12A-2

12A

11D

RESA

RESA

5168D4

5168D12

NANES DRIVE

NANES DRIVE

RESA

RESA

5168D4

5168D12

12A-2

12A

11D

RESA

RESA

5168D4

5168D12

NANES DRIVE

NANES DRIVE

RESA

RESA

5168D4

5168D12

12A-2

12A

11D

RESA

RESA

5168D4

5168D12

NANES DRIVE

NANES DRIVE

RESA

RESA

5168D4

5168D12

12A-2

12A

11D

RESA

RESA

5168D4

5168D12

NANES DRIVE

NANES DRIVE

RESA

RESA

5168D4

5168D12

12A-2

12A

11D

RESA

RESA

5168D4

5168D12

NANES DRIVE

NANES DRIVE

RESA

RESA

5168D4

5168D12

12A-2

12A

11D

RESA

RESA

5168D4

5168D12

NANES DRIVE

NANES DRIVE

RESA

RESA

5168D4

5168D12

12A-2

12A

11D

RESA

RESA

5168D4

5168D12

NANES DRIVE

NANES DRIVE

RESA

RESA

5168D4

5168D12

12A-2

12A

11D

RESA

RESA

5168D4

5168D12

NANES DRIVE

NANES DRIVE

RESA

RESA

5168D4

5168D12

12A-2

12A

11D

RESA

RESA

5168D4

5168D12

NANES DRIVE

NANES DRIVE

RESA

RESA

5168D4

5168D12

12A-2