

# Harris Central Appraisal District

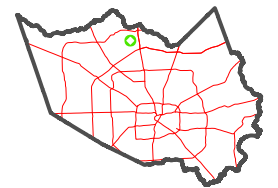


0 45 90 180 Feet

PUBLICATION DATE:  
2/13/2023

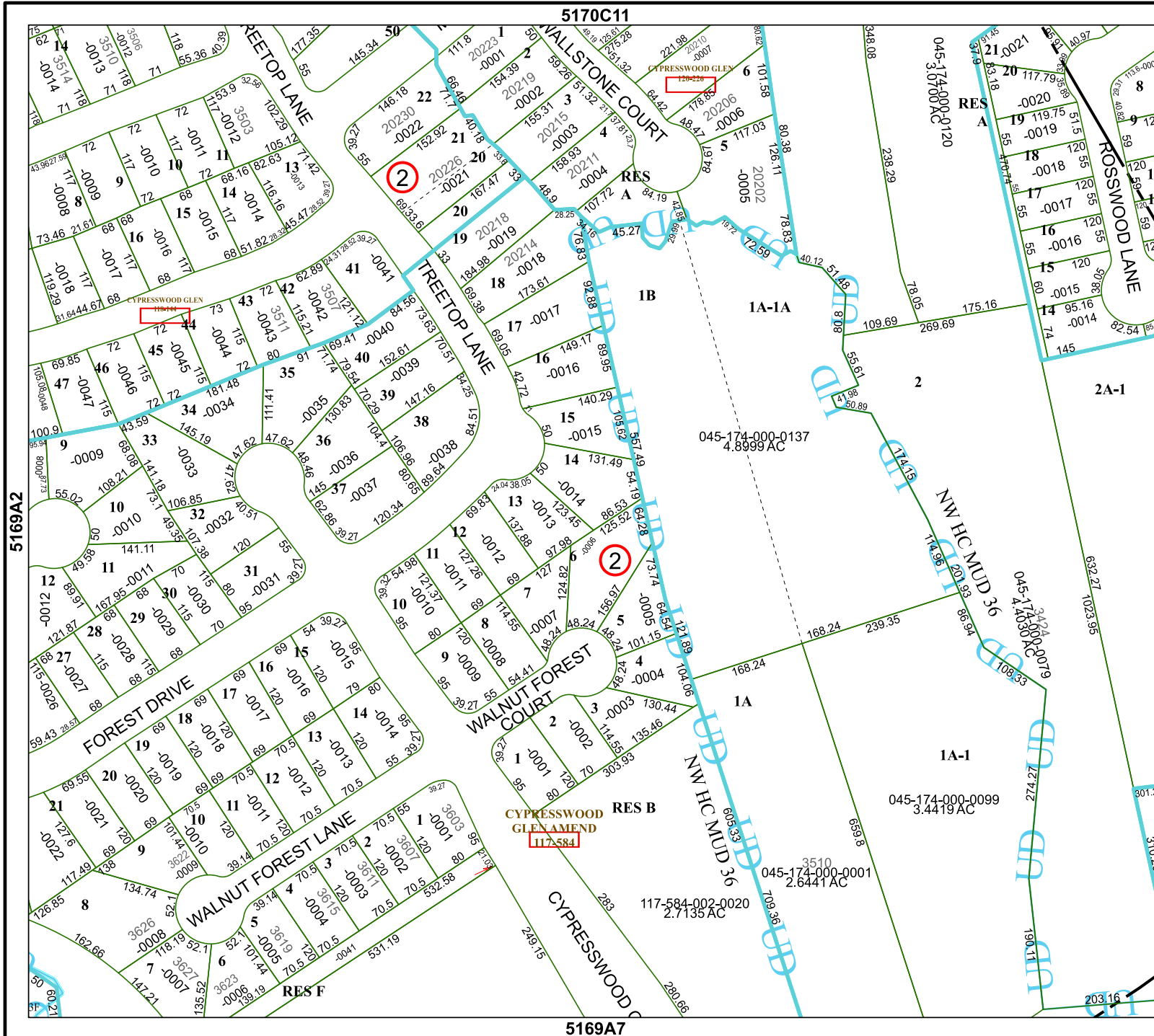
Geospatial or map data maintained by the Harris Central Appraisal District is for informational purposes and may not have been prepared for or be suitable for legal, engineering, or surveying purposes. It does not represent an on-the-ground survey and only represents the approximate location of property boundaries.

MAP LOCATION



## FACET 5169A3

9	10	11	12	9
1	2	3	4	1
5	6	7	8	5



5170C11

5169A2

5169A4

5169A7