

5169A1

5169A9

Harris Central Appraisal District

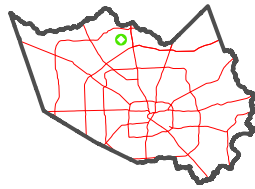


0 45 90 180 Feet

PUBLICATION DATE: 1/6/2023

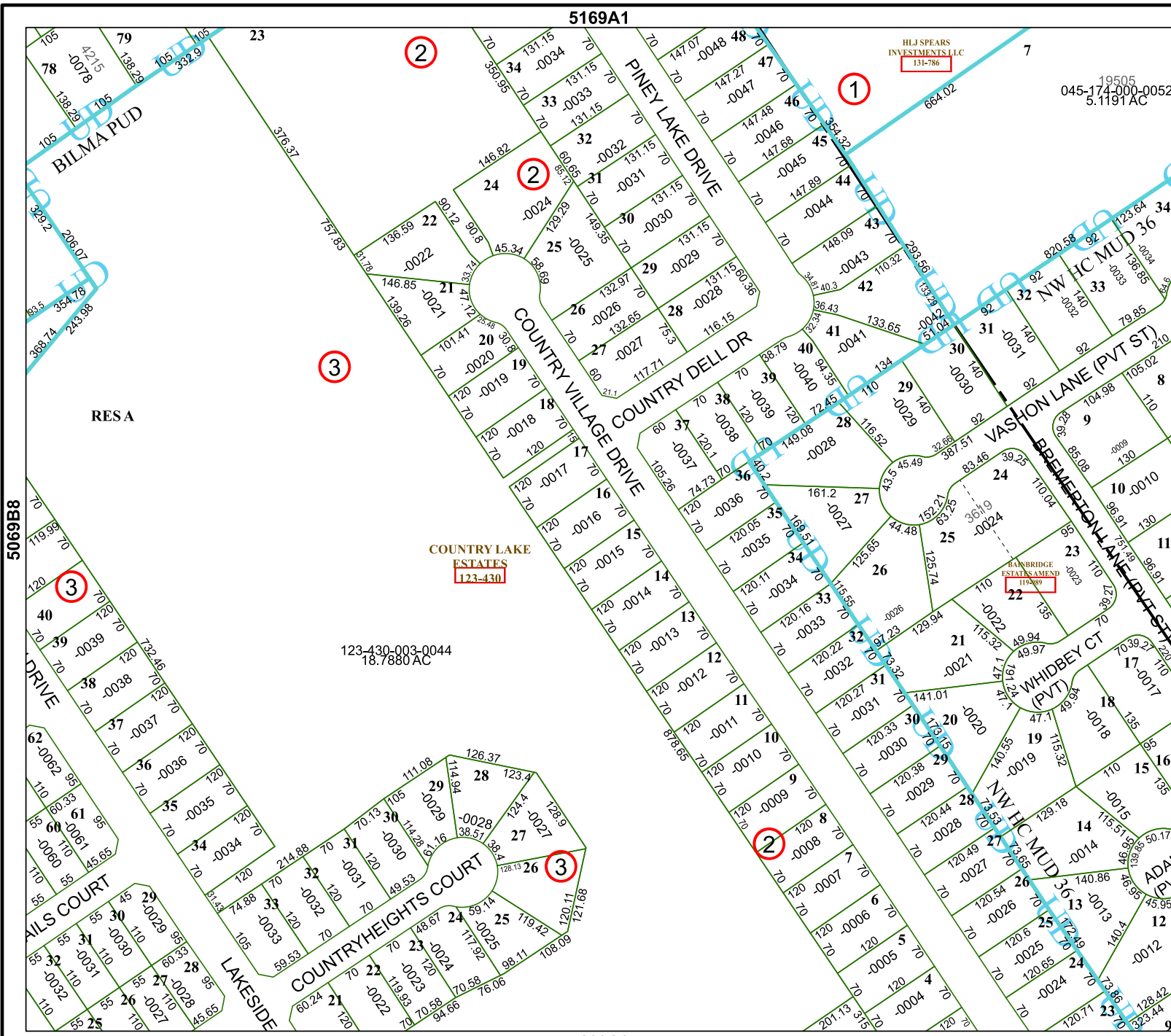
Geospatial or map data maintained by the Harris Central Appraisal District is for informational purposes and may not have been prepared for or be suitable for legal, engineering, or surveying purposes. It does not represent an on-the-ground survey and only represents the approximate location of property boundaries.

MAP LOCATION



FACET 5169A5

3	4	1	2	3
7	8	5	6	7
11	12	9	10	11



HJJ SPEARS INVESTMENTS, LLC
131-786

19505
045-174-000-0052
5.1191 AC

123-430-003-0044
18.7880 AC

BANDRIDGE ESTATES AMEND
119-889