

5169A10

5169C6

Harris Central Appraisal District



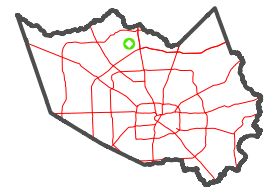
0 45 90 180 Feet

PUBLICATION DATE: 1/6/2023

Geospatial or map data maintained by the Harris Central Appraisal District is for informational purposes and may not have been prepared for or be suitable for legal, engineering, or surveying purposes. It does not represent an on-the-ground survey and only represents the approximate location of property boundaries.

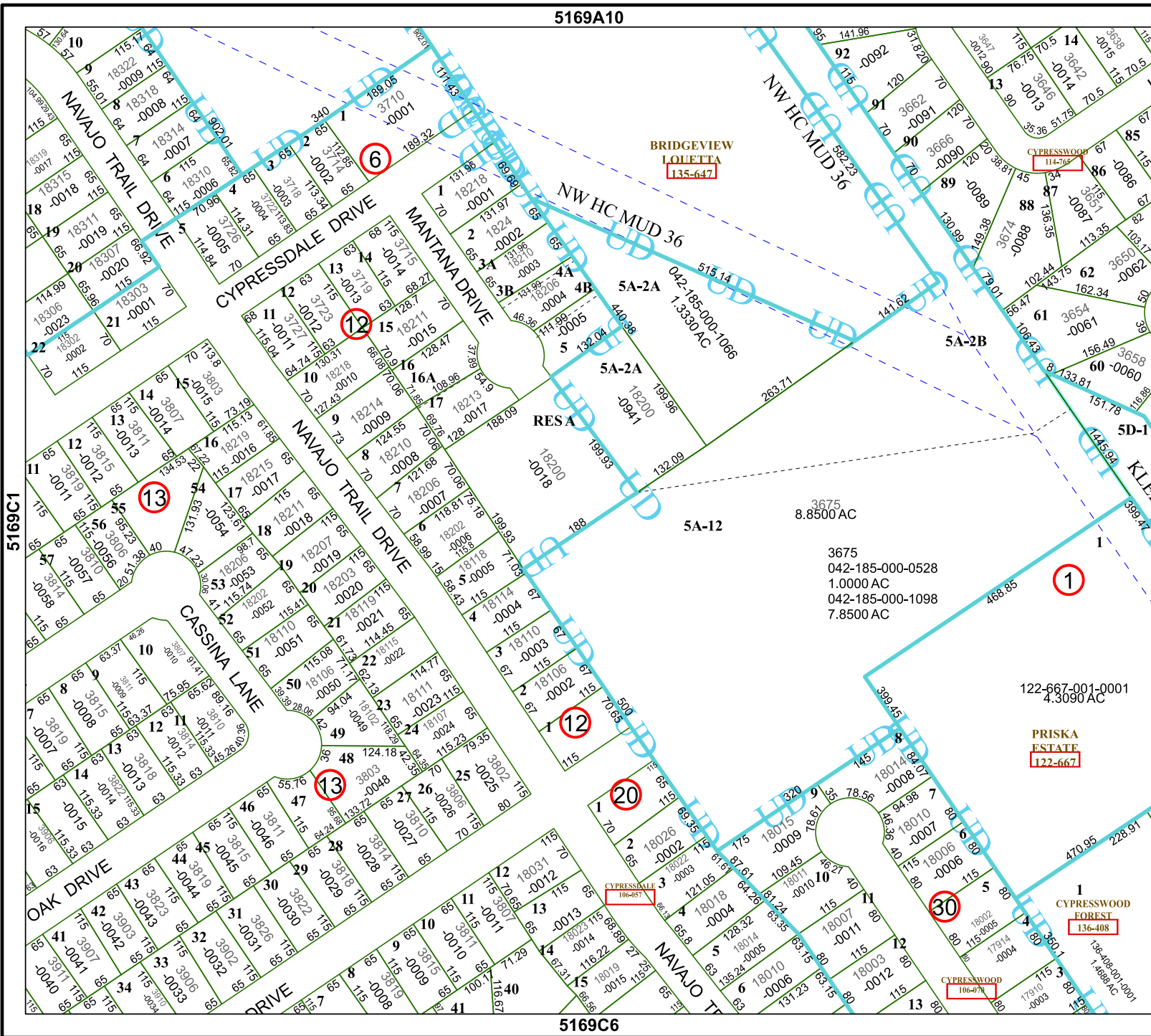


MAP LOCATION



FACET 5169C2

12	9	10	11	12
4	1	2	3	4
8	5	6	7	8



5169C1

5169C2

5169C3

5169C4

5169C5