

Harris Central Appraisal District

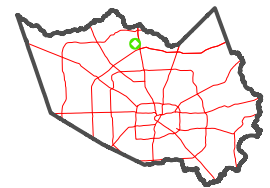


0 45 90 180 Feet

PUBLICATION DATE: 1/6/2023

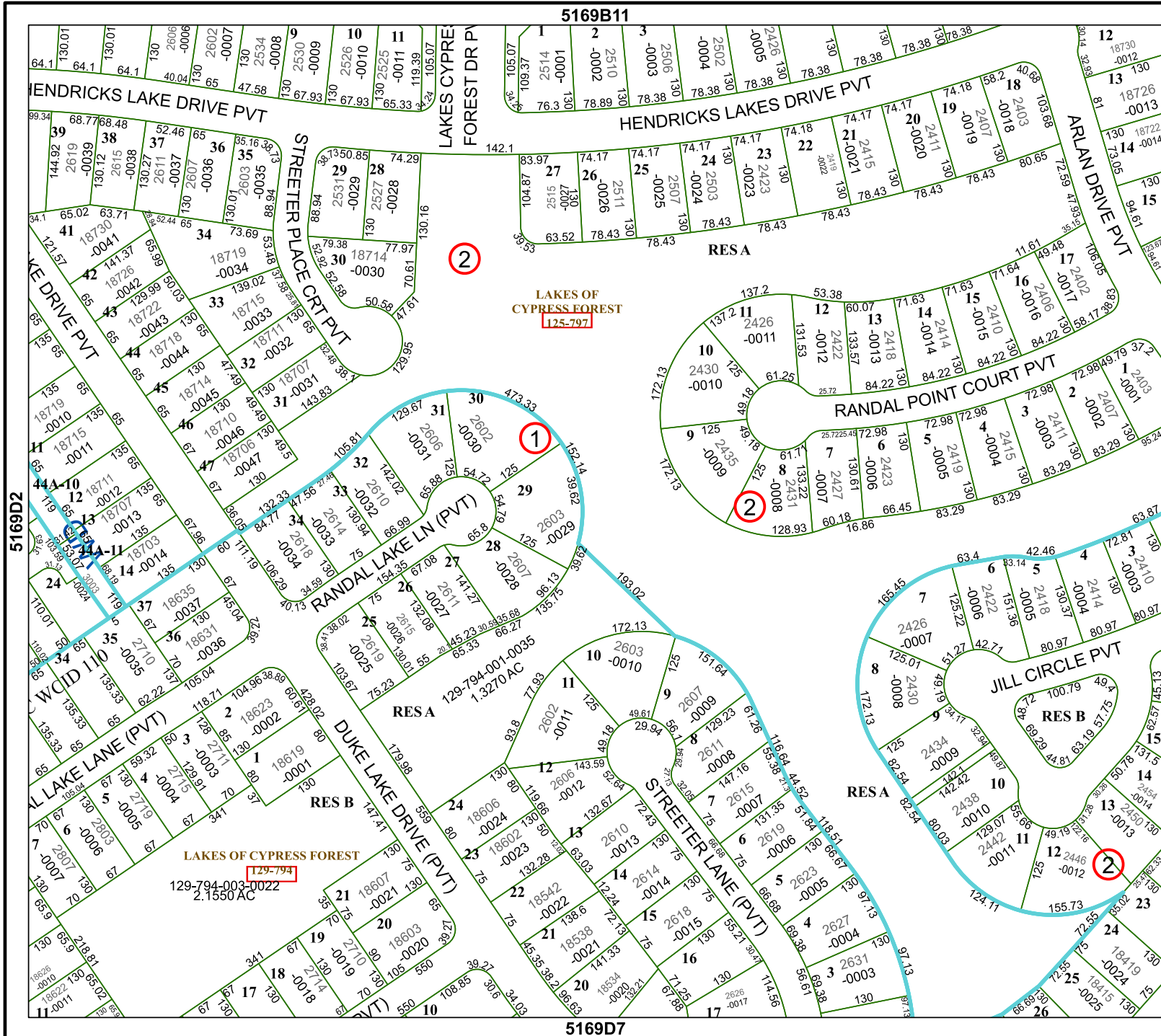
Geospatial or map data maintained by the Harris Central Appraisal District is for informational purposes and may not have been prepared for or be suitable for legal, engineering, or surveying purposes. It does not represent an on-the-ground survey and only represents the approximate location of property boundaries.

MAP LOCATION



FACET 5169D3

9	10	11	12	9
1	2	3	4	1
5	6	7	8	5



5169B11

5169D7

5169D2

5169D4

2

LAKES OF CYPRESS FOREST
125-797

1

RESA

RANDAL POINT COURT PVT

2

RESA

LAKES OF CYPRESS FOREST
129-794
2.1550 AC

RES B

RESA

JILL CIRCLE PVT
RES B

2