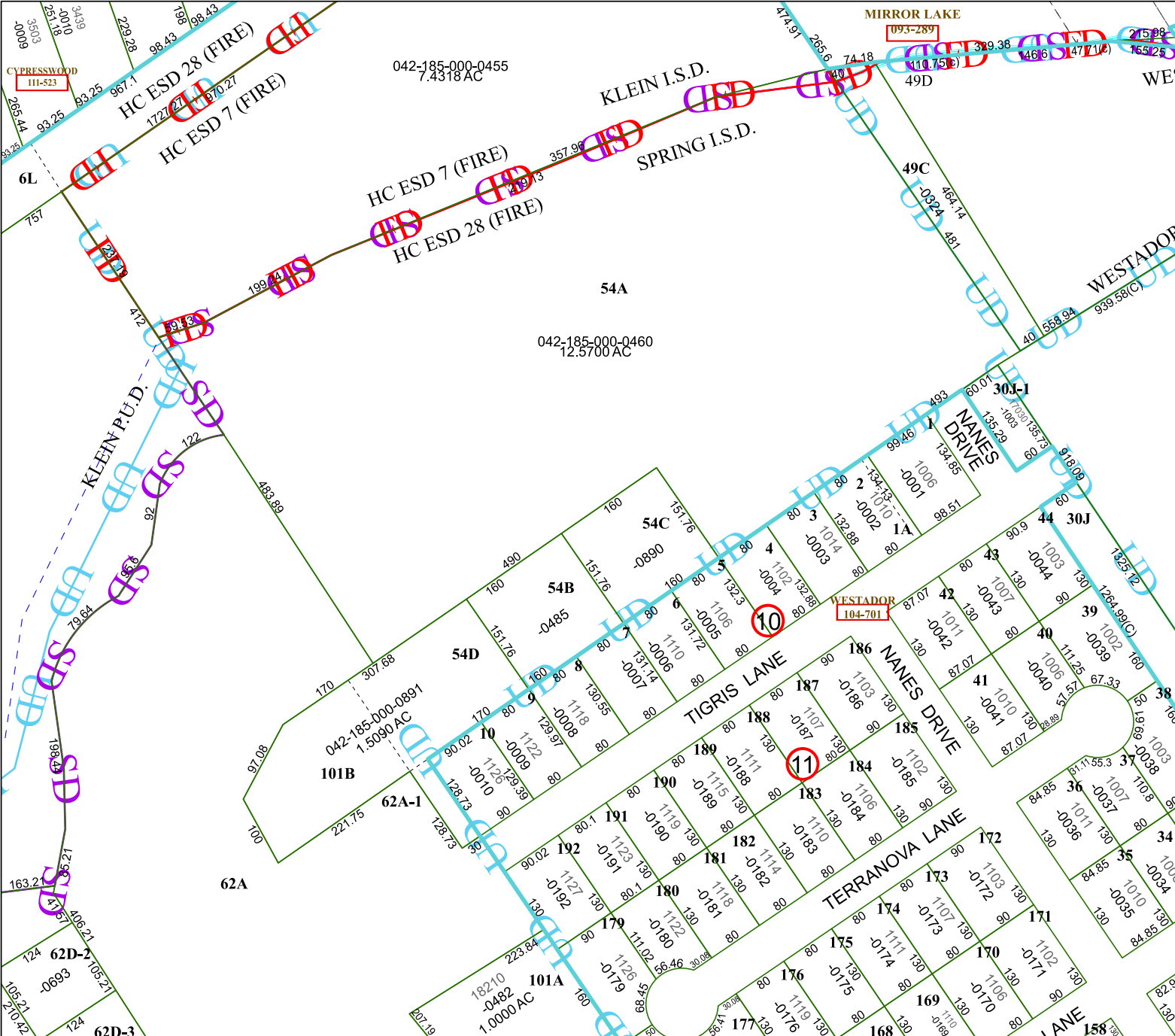


5169D5

MIRROR LAKE



Harris Central Appraisal District

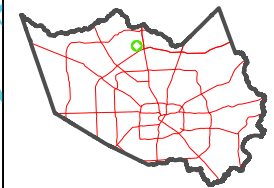


0 45 90 180 Feet

PUBLICATION DATE:
12/30/2023

Geospatial or map data maintained by the Harris Central Appraisal District is for informational purposes and may not have been prepared for or be suitable for legal, engineering, or surveying purposes. It does not represent an on-the-ground survey and only represents the approximate location of property boundaries.

MAP LOCATION



FACET 5169D9

7	8	5	6	7
11	12	9	10	11
3	4	1	2	3

5168B1

5169C12

5169D10

