

5170A2

5170A10

Harris Central Appraisal District



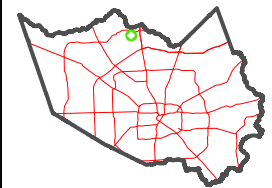
0 45 90 180 Feet

PUBLICATION DATE: 1/23/2024

Geospatial or map data maintained by the Harris Central Appraisal District is for informational purposes and may not have been prepared for or be suitable for legal, engineering, or surveying purposes. It does not represent an on-the-ground survey and only represents the approximate location of property boundaries.

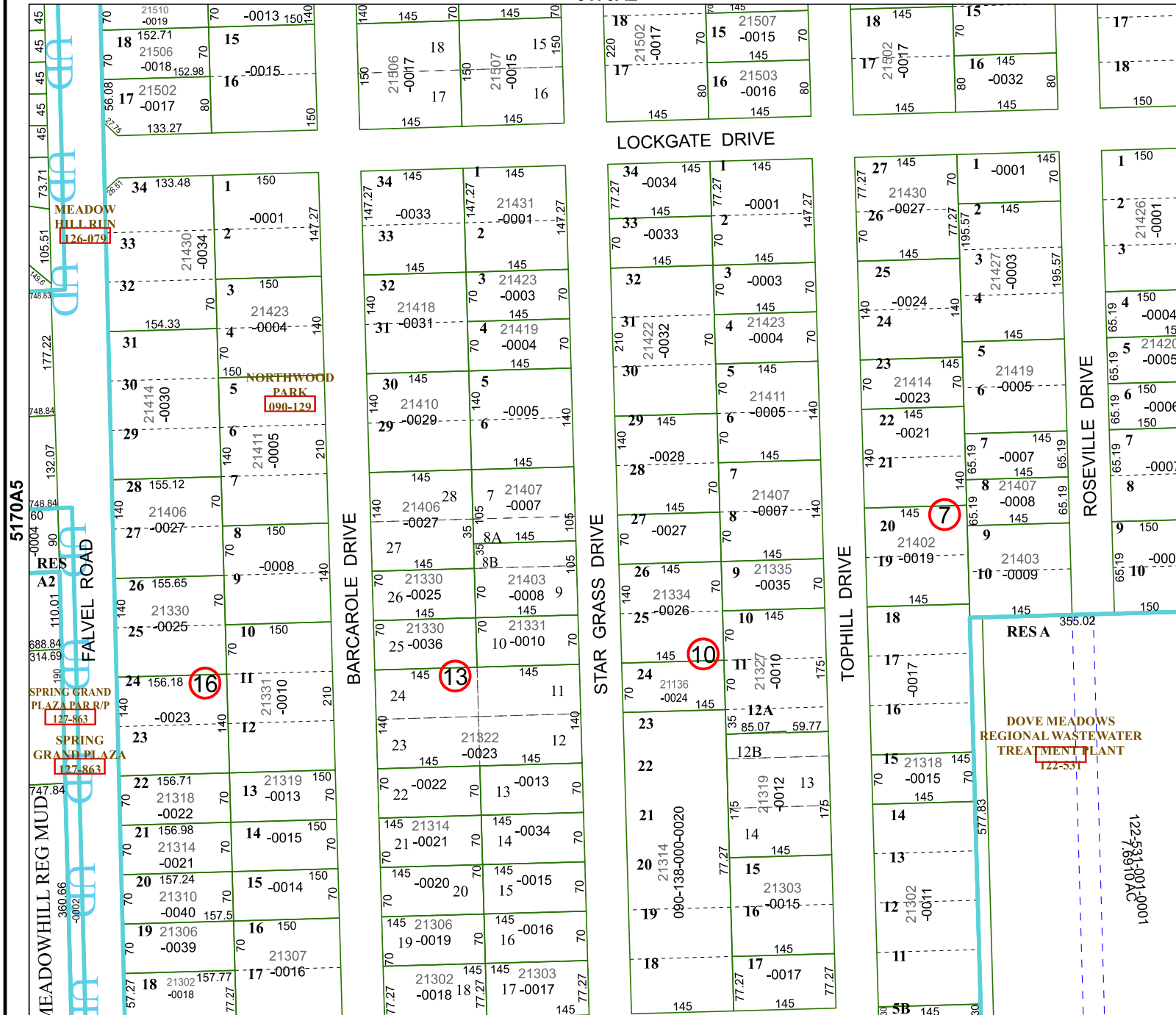


MAP LOCATION



FACET 5170A6

4	1	2	3	4
8	5	6	7	8
12	9	10	11	12



5170A5

5170A7

122-531-001-0001
122-681010AC