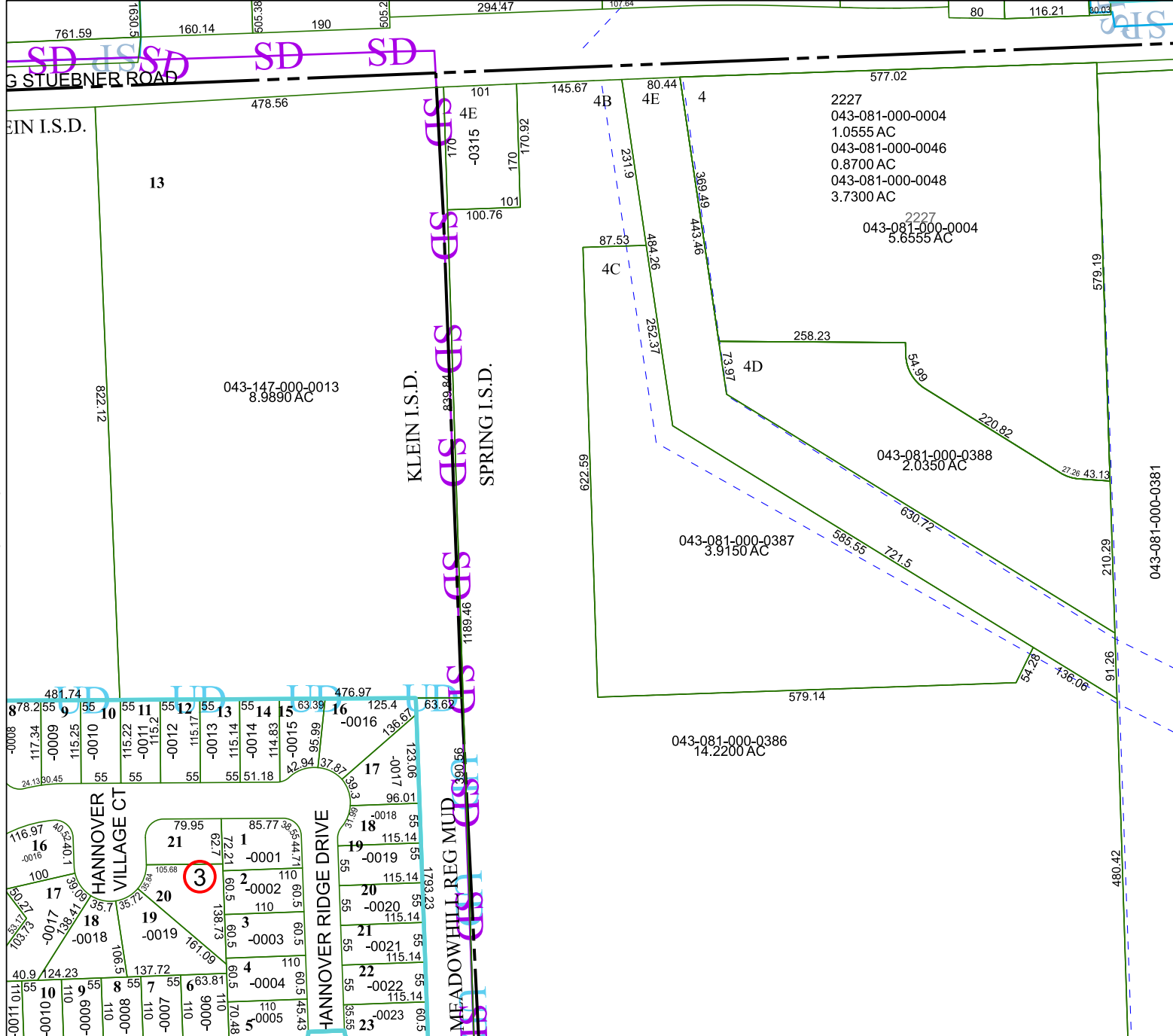


5171D6



Harris Central Appraisal District

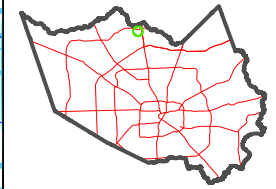


0 45 90 180 Feet

PUBLICATION DATE: 12/30/2023

Geospatial or map data maintained by the Harris Central Appraisal District is for informational purposes and may not have been prepared for or be suitable for legal, engineering, or surveying purposes. It does not represent an on-the-ground survey and only represents the approximate location of property boundaries.

MAP LOCATION



FACET 5171D10

8	5	6	7	8
12	9	10	11	12
4	1	2	3	4

5170B2

5171D9

5171D11

043-081-000-0381

SRC

