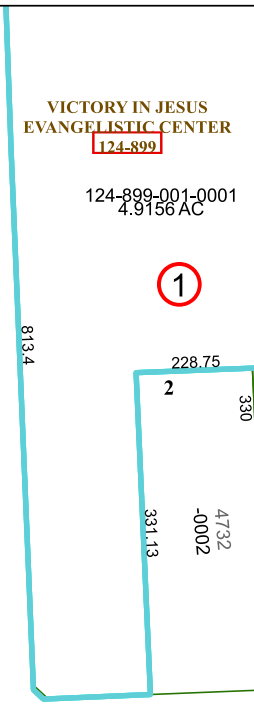
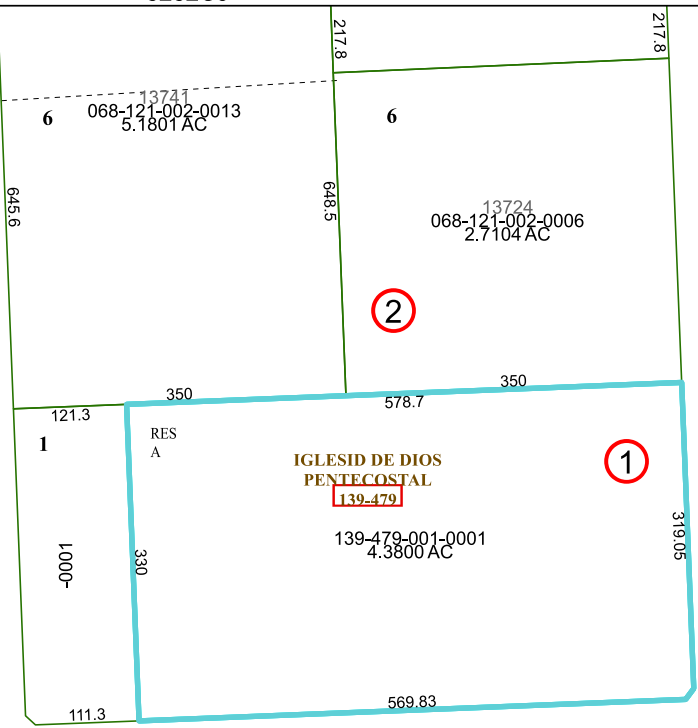
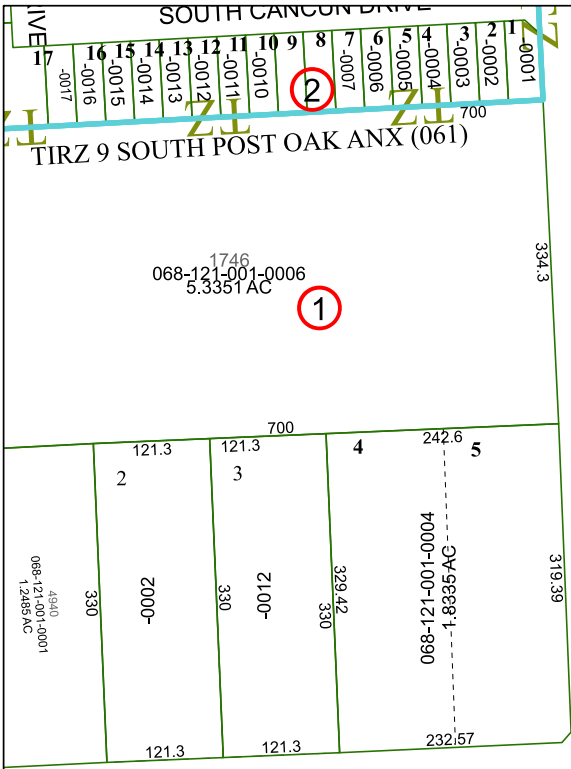
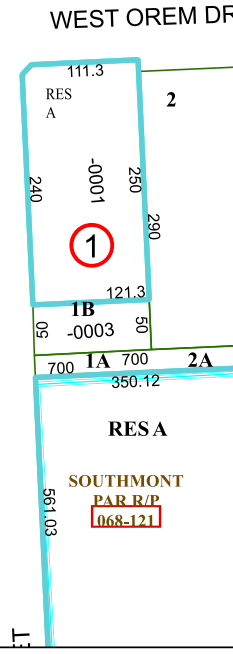
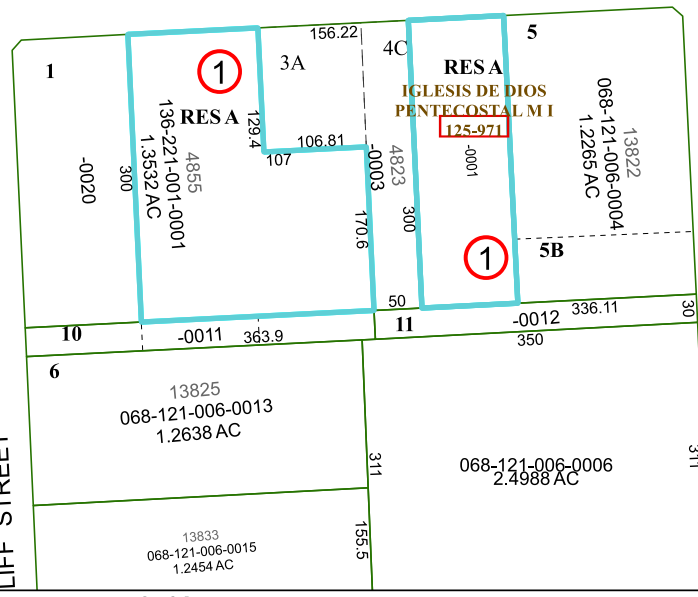
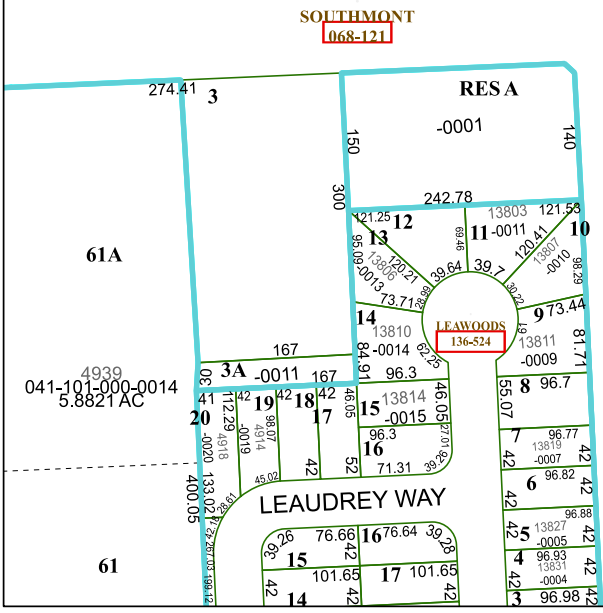


5252C9



5151B4



5251A5

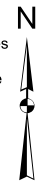
# Harris Central Appraisal District



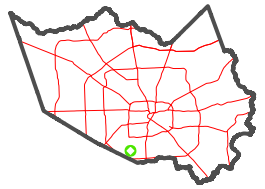
0 45 90 180 Feet

PUBLICATION DATE: 5/22/2023

Geospatial or map data maintained by the Harris Central Appraisal District is for informational purposes and may not have been prepared for or be suitable for legal, engineering, or surveying purposes. It does not represent an on-the-ground survey and only represents the approximate location of property boundaries.



MAP LOCATION



## FACET 5251A1

11	12	9	10	11
3	4	1	2	3
7	8	5	6	7

VICTORY IN JESUS  
EVANGELISTIC CENTER  
124-899

124-899-001-0001  
4.9156 AC

1746  
068-121-001-0006  
5.3351 AC

13741  
068-121-002-0013  
5.1801 AC

13724  
068-121-002-0006  
2.7104 AC

IGLESID DE DIOS  
PENTECOSTAL  
139-479

139-479-001-0001  
4.3800 AC

IGLESID DE DIOS  
PENTECOSTAL MI  
125-971

068-121-006-0004  
1.2265 AC

LEAWOODS  
136-524

4939  
041-101-000-0014  
5.8821 AC

13825  
068-121-006-0013  
1.2638 AC

068-121-006-0006  
2.4988 AC

SOUTHMONT  
PAR/R/P  
068-121

13833  
068-121-006-0015  
1.2454 AC