

Harris Central Appraisal District

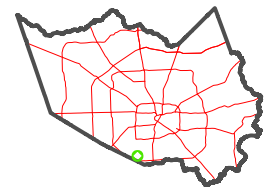


0 45 90 180 Feet

PUBLICATION DATE:
12/30/2023

Geospatial or map data maintained by the Harris Central Appraisal District is for informational purposes and may not have been prepared for or be suitable for legal, engineering, or surveying purposes. It does not represent an on-the-ground survey and only represents the approximate location of property boundaries.

MAP LOCATION



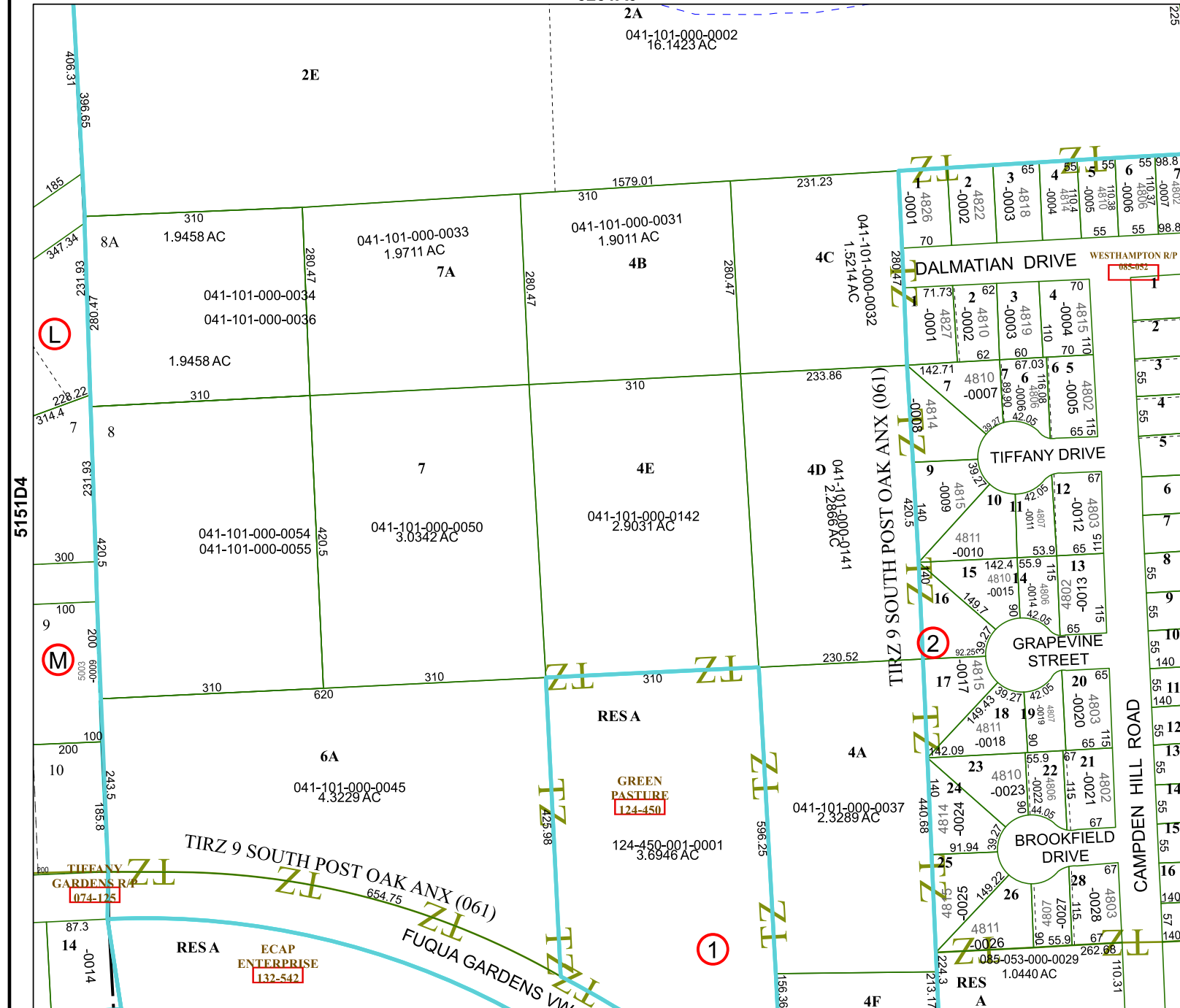
FACET 5251C1

11	12	9	10	11
3	4	1	2	3
7	8	5	6	7

5251A9

2A
041-101-000-0002
16.1423 AC

2E



5251C5

1

2

L

M

