

5253D9

Harris Central Appraisal District



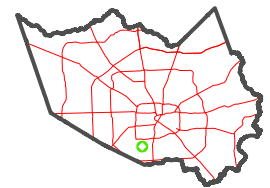
0 45 90 180 Feet

PUBLICATION DATE:
1/6/2023

Geospatial or map data maintained by the Harris Central Appraisal District is for informational purposes and may not have been prepared for or be suitable for legal, engineering, or surveying purposes. It does not represent an on-the-ground survey and only represents the approximate location of property boundaries.



MAP LOCATION



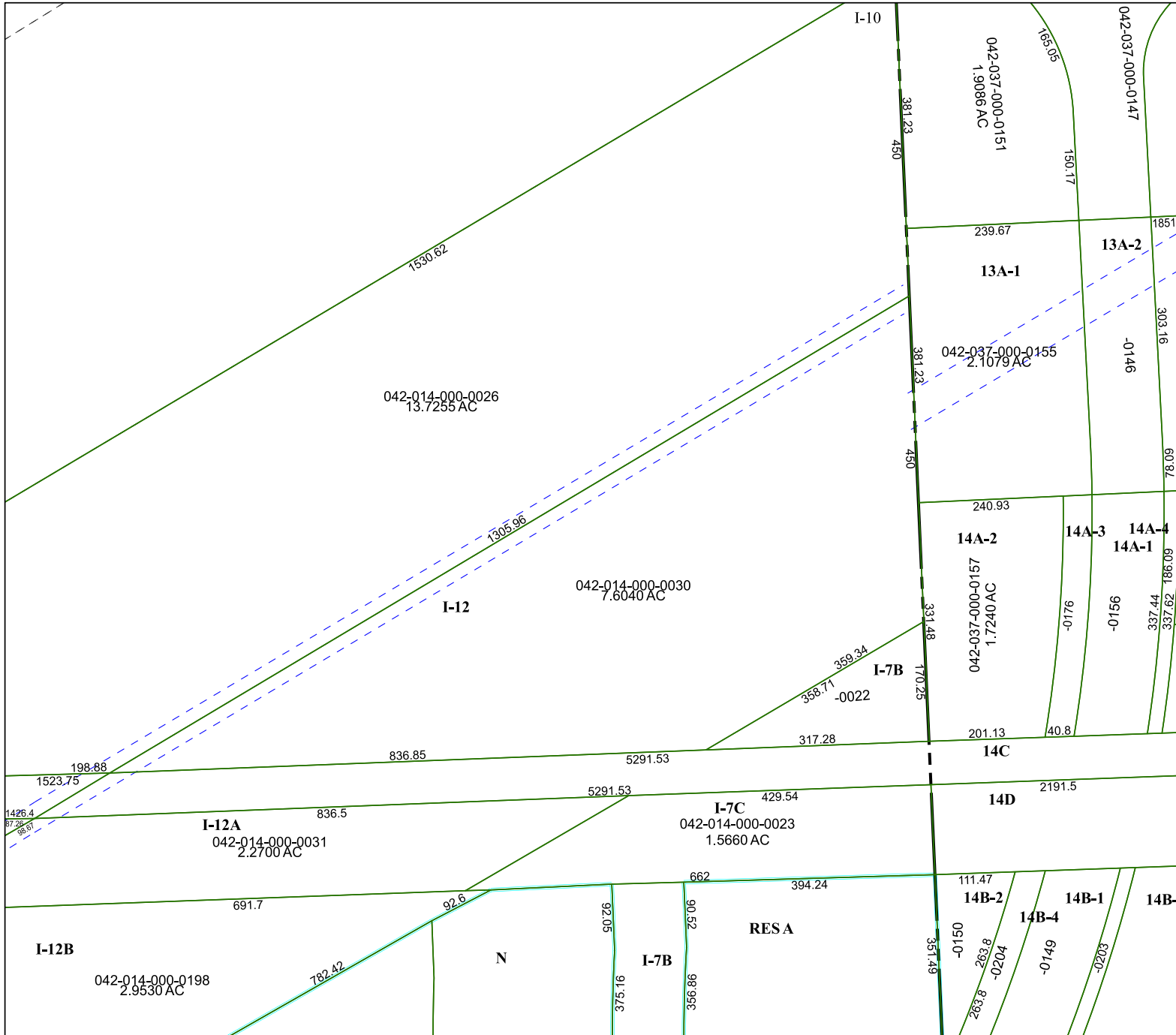
FACET 5252B1

11	12	9	10	11
3	4	1	2	3
7	8	5	6	7

5252A4

5252B2

5252B5



I-10

042-037-000-0151
1.9086 AC

042-037-000-0147

042-014-000-0026
13.7255 AC

13A-1

13A-2

042-037-000-0155
2.1079 AC

I-12

042-014-000-0030
7.6040 AC

14A-2

14A-3

14A-4

14A-1

042-037-000-0157
1.7240 AC

I-7B

14C

14D

I-12A

042-014-000-0031
2.2700 AC

I-7C

042-014-000-0023
1.5660 AC

I-12B

042-014-000-0198
2.9530 AC

RESA

I-7B

14B-2

14B-1

14B-3

14B-4

N