

5253D12

Harris Central Appraisal District



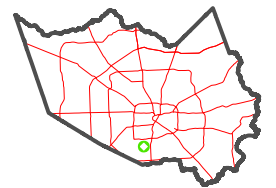
0 45 90 180
Feet

PUBLICATION DATE:
1/6/2023

Geospatial or map data maintained by the Harris Central Appraisal District is for informational purposes and may not have been prepared for or be suitable for legal, engineering, or surveying purposes. It does not represent an on-the-ground survey and only represents the approximate location of property boundaries.



MAP LOCATION



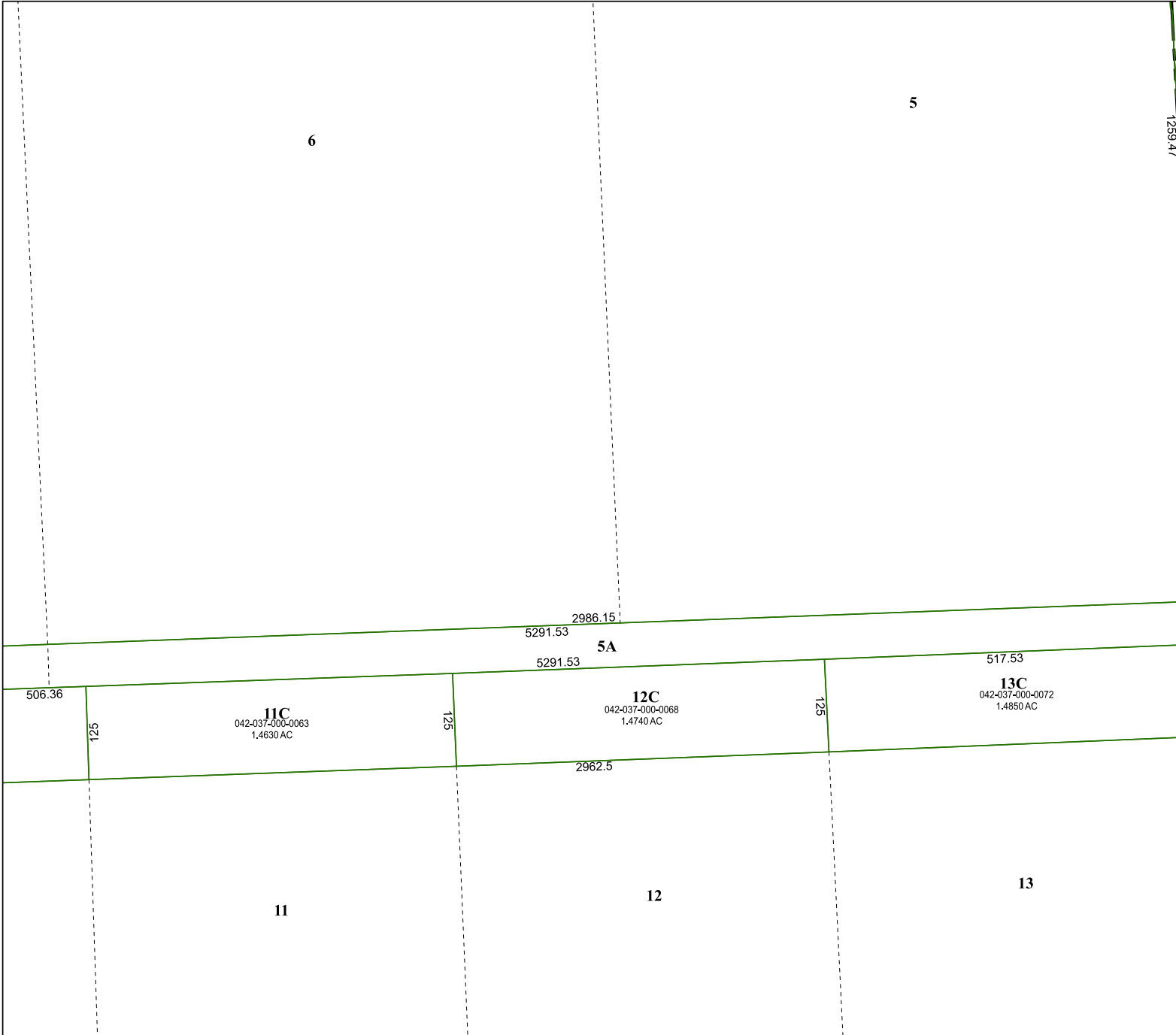
FACET 5252B4

10	11	12	9	10
2	3	4	1	2
6	7	8	5	6

5252B3

5352A
1259.47

5352A



5252B8