

# Harris Central Appraisal District



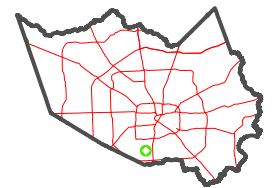
0 45 90 180 Feet

PUBLICATION DATE: 1/6/2023

Geospatial or map data maintained by the Harris Central Appraisal District is for informational purposes and may not have been prepared for or be suitable for legal, engineering, or surveying purposes. It does not represent an on-the-ground survey and only represents the approximate location of property boundaries.

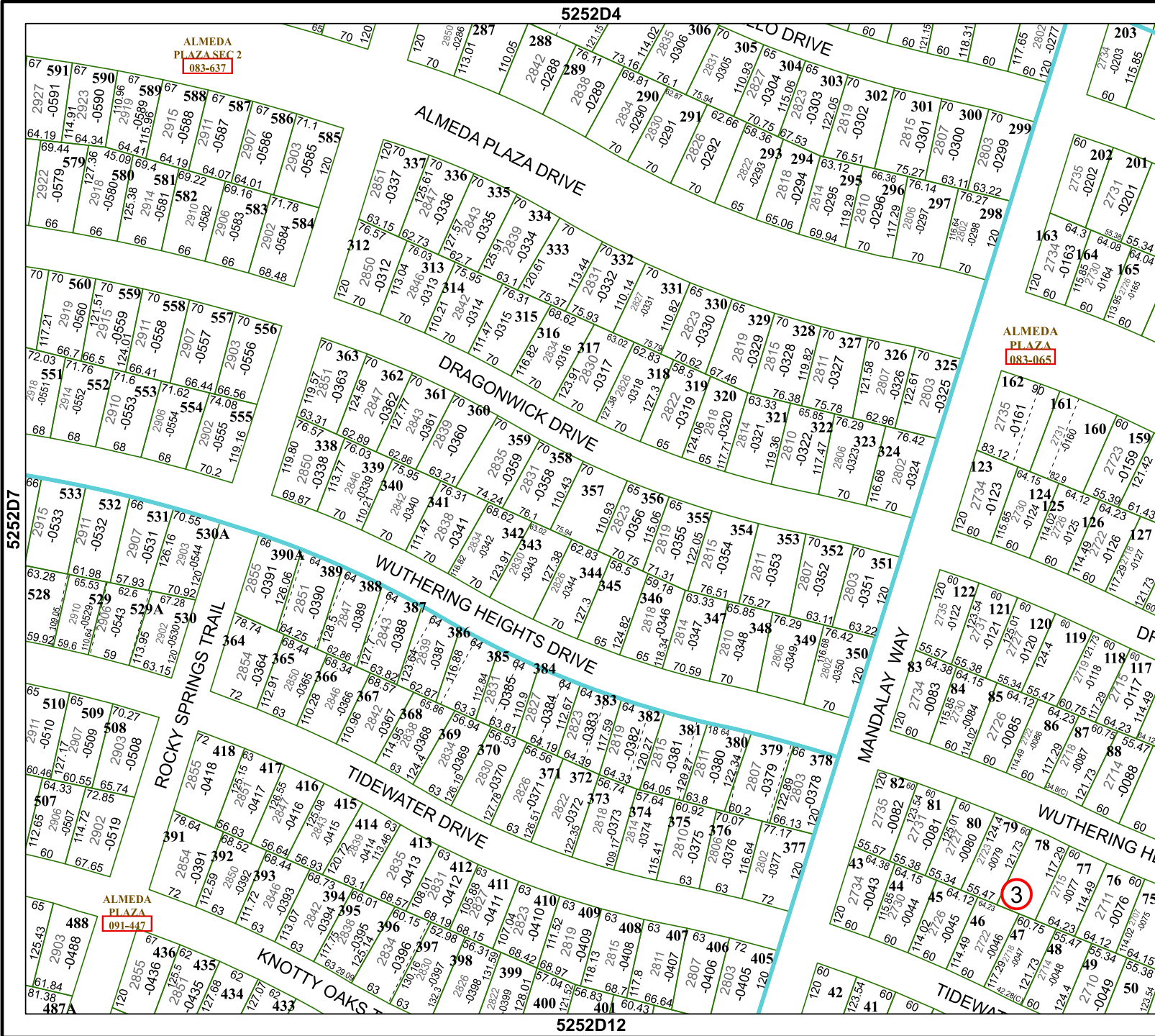


MAP LOCATION



## FACET 5252D8

2	3	4	1	2
6	7	8	5	6
10	11	12	9	10



ALMEDA PLAZA SEC 2  
083-637

ALMEDA PLAZA  
083-065

ALMEDA PLAZA  
091-447

5252D12

5252D7

5252D4

5352C5