

# Harris Central Appraisal District



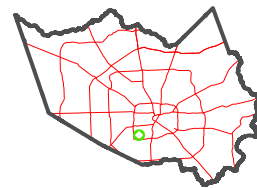
0 45 90 180 Feet

PUBLICATION DATE: 5/6/2024

Geospatial or map data maintained by the Harris Central Appraisal District is for informational purposes and may not have been prepared for or be suitable for legal, engineering, or surveying purposes. It does not represent an on-the-ground survey and only represents the approximate location of property boundaries.



MAP LOCATION

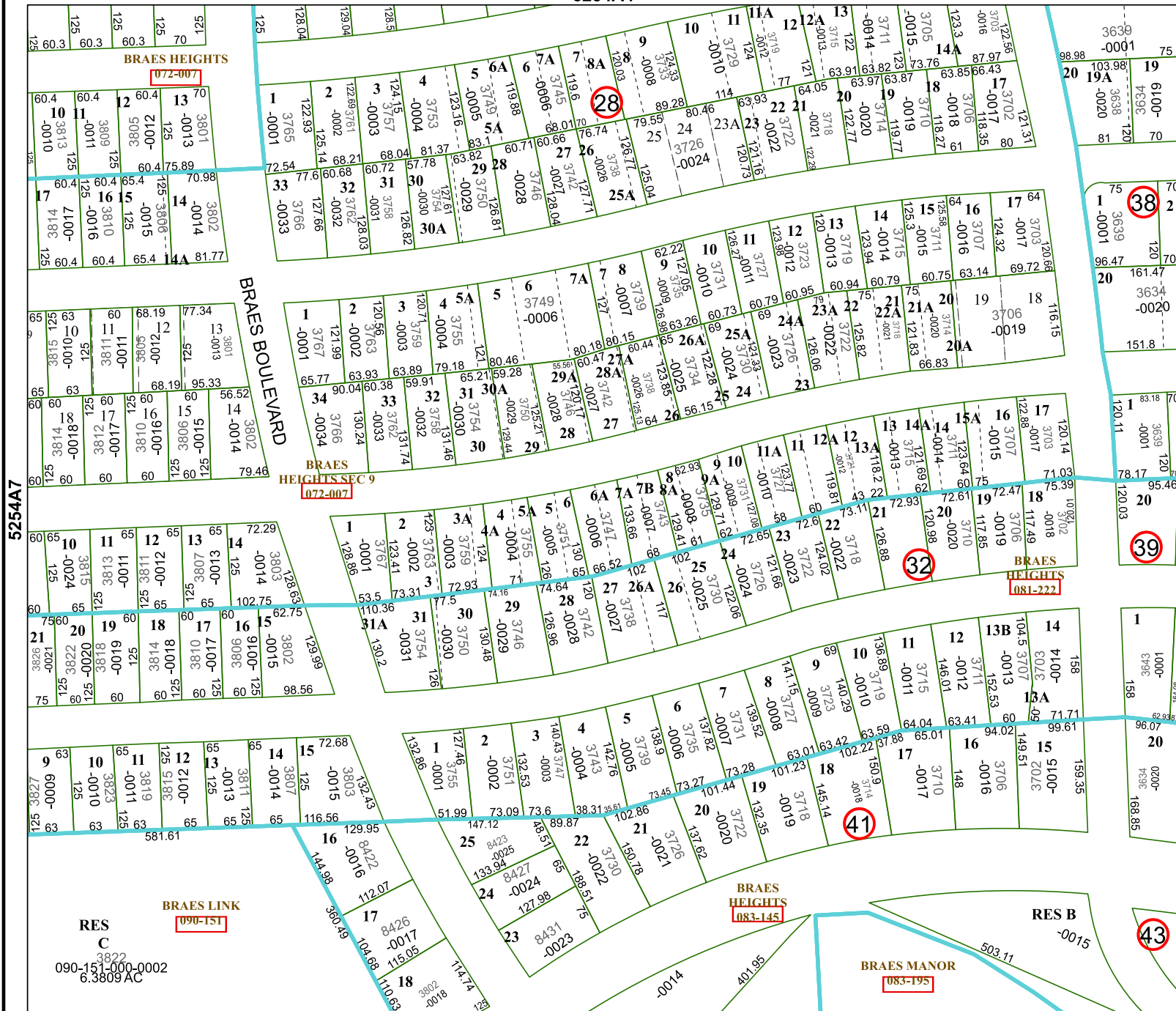


# FACET 5254A8

2	3	4	5	6
6	7	8	9	10

5254A4

5254A12



5254B

5254A

**BRAES HEIGHTS**

**BRAES BOULEVARD**

**BRAES HEIGHTS SEC 9**

**BRAES HEIGHTS**

**BRAES HEIGHTS**

**BRAES MANOR**

**BRAES LINK**

**RES C**

**RES B**

090-15-0000-0002  
6.3809 AC