

# Harris Central Appraisal District

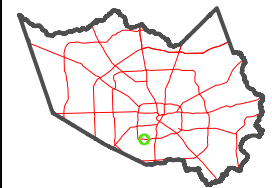


0 45 90 180 Feet

PUBLICATION DATE:  
2/28/2024

Geospatial or map data maintained by the Harris Central Appraisal District is for informational purposes and may not have been prepared for or be suitable for legal, engineering, or surveying purposes. It does not represent an on-the-ground survey and only represents the approximate location of property boundaries.

MAP LOCATION



## FACET 5254D9

7	8	5	6	7
11	12	9	10	11
3	4	1	2	3

5254D5

RES A

1

15

16

7

1

1

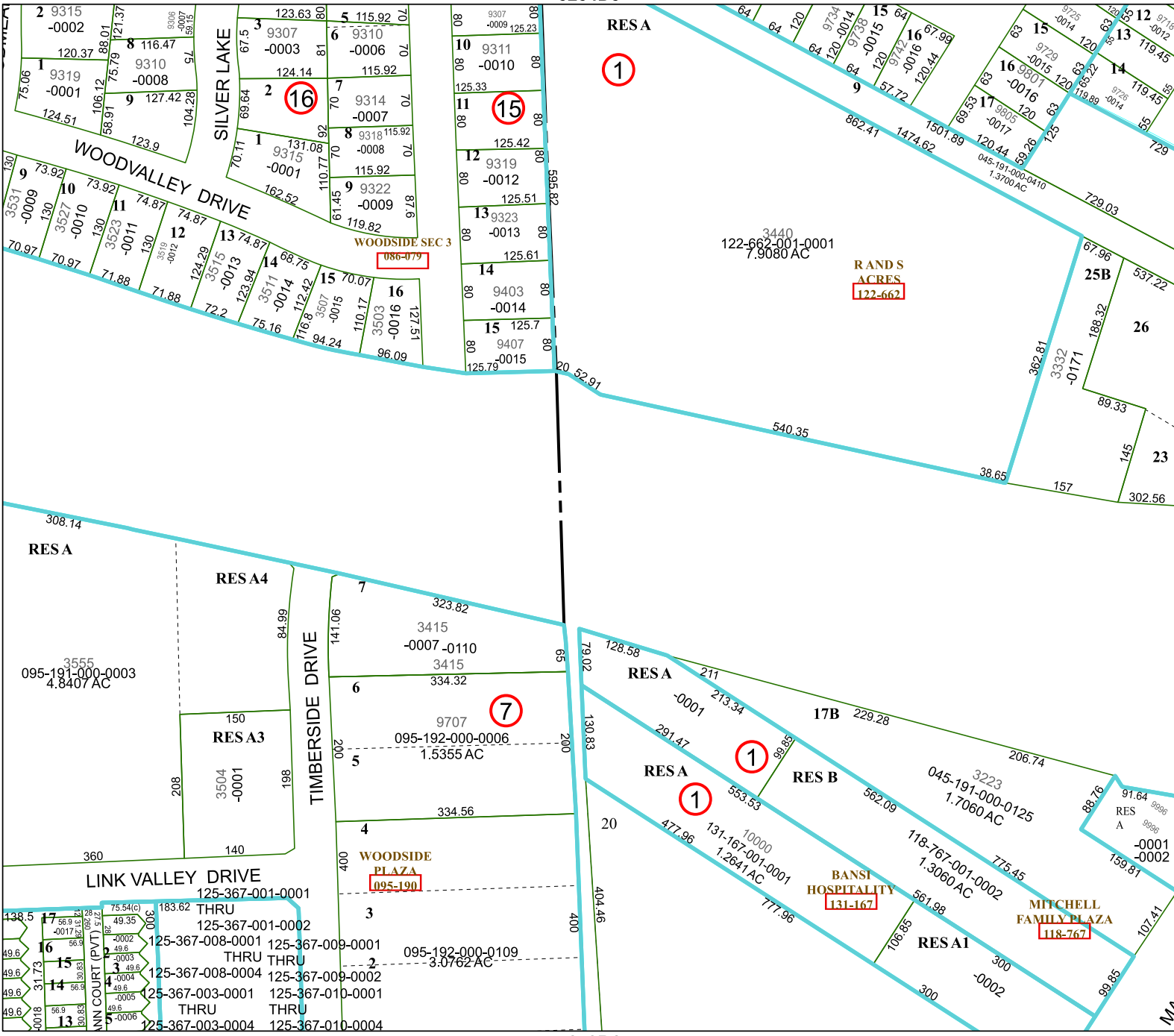
1

5253B1

5254C12

5254D10

Ma



SILVER LAKE

WOODVALLEY DRIVE

WOODSIDE SEC 3

TIMBERSIDE DRIVE

LINK VALLEY DRIVE

RANDS ACRES  
122-662

BANSI HOSPITALITY  
131-167

MITCHELL FAMILY PLAZA  
118-767

WOODSIDE PLAZA  
095-190

2 9315  
-0002  
120.37  
9319  
-0001  
124.51

5 115.92  
01  
9310  
-0006  
115.92

10 9311  
-0010  
125.33

15 64  
120  
-0014  
64  
120  
-0015  
64  
120  
-0016  
64  
120  
-0017

16 67.99  
120.44

17 9805  
-0017  
120.44

12 9715  
-0012  
119.45

9 73.92  
-0009  
130  
3527  
-0010  
130  
3523  
-0011  
130

11 74.87  
74.87  
130  
3519  
-0012  
130  
3511  
-0013  
130

12 74.87  
74.87  
130  
3503  
-0014  
130  
3503  
-0015  
130

13 74.87  
74.87  
130  
3503  
-0016  
130  
3503  
-0017  
130

14 68.75  
70.07  
130  
3503  
-0018  
130  
3503  
-0019  
130

15 125.7  
9407  
-0015  
125.79

3440  
122-662-001-0001  
7.9080 AC

25B 67.96  
537.22

26 188.32  
188.32

23 145  
302.56

10 73.92  
-0010  
130  
3527  
-0011  
130  
3523  
-0012  
130

11 74.87  
74.87  
130  
3519  
-0013  
130  
3511  
-0014  
130

12 74.87  
74.87  
130  
3503  
-0015  
130  
3503  
-0016  
130

13 74.87  
74.87  
130  
3503  
-0017  
130  
3503  
-0018  
130

14 68.75  
70.07  
130  
3503  
-0019  
130  
3503  
-0020  
130

15 125.7  
9407  
-0015  
125.79

3440  
122-662-001-0001  
7.9080 AC

25B 67.96  
537.22

26 188.32  
188.32

23 145  
302.56

9 73.92  
-0009  
130  
3527  
-0010  
130  
3523  
-0011  
130

10 74.87  
74.87  
130  
3519  
-0012  
130  
3511  
-0013  
130

11 74.87  
74.87  
130  
3503  
-0014  
130  
3503  
-0015  
130

12 74.87  
74.87  
130  
3503  
-0016  
130  
3503  
-0017  
130

13 74.87  
74.87  
130  
3503  
-0018  
130  
3503  
-0019  
130

14 68.75  
70.07  
130  
3503  
-0020  
130  
3503  
-0021  
130

15 125.7  
9407  
-0015  
125.79

3440  
122-662-001-0001  
7.9080 AC

25B 67.96  
537.22

26 188.32  
188.32

7 323.82  
3415  
-0007-0110  
3415  
334.32

6 9707  
095-192-000-0006  
1.5355 AC

5 334.56

4 334.56

3 10000  
131-167-001-0001  
1.2641 AC

20 477.96

17B 229.28

RES B

3223  
045-191-000-0125  
1.7060 AC

RES A  
9906  
-0001  
-0002  
159.81

17 56.9  
-0017  
56.9

16 49.6  
-0016  
49.6

15 49.6  
-0015  
49.6

14 49.6  
-0014  
49.6

13 49.6  
-0013  
49.6

12 49.6  
-0012  
49.6

11 49.6  
-0011  
49.6

10 49.6  
-0010  
49.6

9 49.6  
-0009  
49.6

8 49.6  
-0008  
49.6

17 56.9  
-0017  
56.9

16 49.6  
-0016  
49.6

15 49.6  
-0015  
49.6

14 49.6  
-0014  
49.6

13 49.6  
-0013  
49.6

12 49.6  
-0012  
49.6

11 49.6  
-0011  
49.6

10 49.6  
-0010  
49.6

9 49.6  
-0009  
49.6

8 49.6  
-0008  
49.6

17 56.9  
-0017  
56.9

16 49.6  
-0016  
49.6

15 49.6  
-0015  
49.6

14 49.6  
-0014  
49.6

13 49.6  
-0013  
49.6

12 49.6  
-0012  
49.6

11 49.6  
-0011  
49.6

10 49.6  
-0010  
49.6

9 49.6  
-0009  
49.6

8 49.6  
-0008  
49.6