

5256C9

6

Harris Central Appraisal District



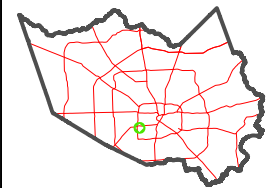
0 50 100 200 Feet

PUBLICATION DATE:
12/12/2025

Geospatial or map data maintained by the Harris Central Appraisal District is for informational purposes and may not have been prepared for or be suitable for legal, engineering, or surveying purposes. It does not represent an on-the-ground survey and only represents the approximate location of property boundaries.



MAP LOCATION



FACET 5255A1

11	12	9	10	11
3	4	1	2	3
7	8	5	6	7

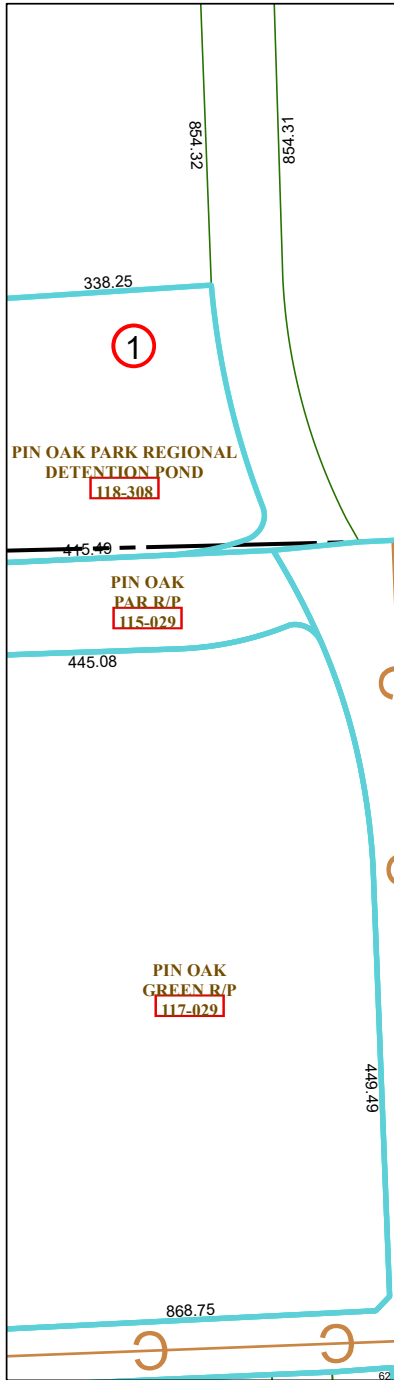
CITY OF HOUSTON

CITY OF BELLAIRE

2

3

6



1	115.5	58.77	59.57	115.5	59.57	28	1227	1227	115.5	59.57	29	1226	115.5	59.57	56	115.5	61.6
2	5401	-0001	115.5	58.77	59.57	5403	1225	1225	115.5	59.57	30	1224	115.5	59.57	55	1225	56
3	5405	-0003	115.5	59.57	5407	1221	1221	115.5	59.57	31	1222	1222	115.5	59.57	54	1223	57
4	5409	-0005	115.5	59.57	5411	1219	1219	115.5	59.57	32	1220	1220	115.5	59.57	53	1221	56
5	5413	-0007	115.5	59.57	5415	1217	1217	115.5	59.57	33	1218	1218	115.5	59.57	52	1219	57
6	5417	-0008	115.5	59.57	5419	1215	1215	115.5	59.57	34	1216	1216	115.5	59.57	51	1217	57
7	5421	-0011	115.5	59.57	5423	1213	1213	115.5	59.57	35	1214	1214	115.5	59.57	50	1215	57
8	5425	-0012	115.5	59.57	5427	1211	1211	115.5	59.57	36	1210	1210	115.5	59.57	48A	1211	114
9	5429	-0013	115.5	59.57	5431	1209	1209	115.5	59.57	37	1208	1208	115.5	59.57	47	1209	115.5
10	5435	-0014	115.5	59.57	5439	1207	1207	115.5	59.57	38	1206	1206	115.5	59.57	46	1207	115.5
11	5443	-0016	115.5	59.57	5447	1205	1205	115.5	59.57	39	1204	1204	115.5	59.57	45	1205	115.5
12	5451	-0018	115.5	59.57	5455	1203	1203	115.5	59.57	40	1202	1202	115.5	59.57	44	1203	115.5
13	5459	-0020	115.5	59.57	5463	1201	1201	115.5	59.57	41	1200	1200	115.5	59.57	43	1201	115.5
14	5467	-0022	115.5	59.57	5471	1199	1199	115.5	59.57	42	1198	1198	115.5	59.57	43	1201	115.5
15	5475	-0024	115.5	59.57	5479	1197	1197	115.5	59.57	43	1196	1196	115.5	59.57	43	1201	115.5
16	5483	-0026	115.5	59.57	5487	1195	1195	115.5	59.57	44	1194	1194	115.5	59.57	43	1201	115.5
17	5491	-0028	115.5	59.57	5495	1193	1193	115.5	59.57	45	1192	1192	115.5	59.57	43	1201	115.5
18	5499	-0030	115.5	59.57	5503	1191	1191	115.5	59.57	46	1190	1190	115.5	59.57	43	1201	115.5
19	5507	-0032	115.5	59.57	5511	1189	1189	115.5	59.57	47	1188	1188	115.5	59.57	43	1201	115.5
20	5515	-0034	115.5	59.57	5519	1187	1187	115.5	59.57	48	1186	1186	115.5	59.57	43	1201	115.5
21	5523	-0036	115.5	59.57	5527	1185	1185	115.5	59.57	49	1184	1184	115.5	59.57	43	1201	115.5
22	5531	-0038	115.5	59.57	5535	1183	1183	115.5	59.57	50	1182	1182	115.5	59.57	43	1201	115.5
23	5539	-0040	115.5	59.57	5547	1181	1181	115.5	59.57	51	1180	1180	115.5	59.57	43	1201	115.5
24	5547	-0042	115.5	59.57	5555	1179	1179	115.5	59.57	52	1178	1178	115.5	59.57	43	1201	115.5
25	5555	-0044	115.5	59.57	5563	1177	1177	115.5	59.57	53	1176	1176	115.5	59.57	43	1201	115.5
26	5563	-0046	115.5	59.57	5571	1175	1175	115.5	59.57	54	1174	1174	115.5	59.57	43	1201	115.5
27	5571	-0048	115.5	59.57	5579	1173	1173	115.5	59.57	55	1172	1172	115.5	59.57	43	1201	115.5
28	5579	-0050	115.5	59.57	5587	1171	1171	115.5	59.57	56	1170	1170	115.5	59.57	43	1201	115.5
29	5587	-0052	115.5	59.57	5595	1169	1169	115.5	59.57	57	1168	1168	115.5	59.57	43	1201	115.5
30	5595	-0054	115.5	59.57	5603	1167	1167	115.5	59.57	58	1166	1166	115.5	59.57	43	1201	115.5
31	5603	-0056	115.5	59.57	5611	1165	1165	115.5	59.57	59	1164	1164	115.5	59.57	43	1201	115.5
32	5611	-0058	115.5	59.57	5619	1163	1163	115.5	59.57	60	1162	1162	115.5	59.57	43	1201	115.5
33	5619	-0060	115.5	59.57	5627	1161	1161	115.5	59.57	61	1160	1160	115.5	59.57	43	1201	115.5
34	5627	-0062	115.5	59.57	5635	1159	1159	115.5	59.57	62	1158	1158	115.5	59.57	43	1201	115.5
35	5635	-0064	115.5	59.57	5643	1157	1157	115.5	59.57	63	1156	1156	115.5	59.57	43	1201	115.5
36	5643	-0066	115.5	59.57	5651	1155	1155	115.5	59.57	64	1154	1154	115.5	59.57	43	1201	115.5
37	5651	-0068	115.5	59.57	5659	1153	1153	115.5	59.57	65	1152	1152	115.5	59.57	43	1201	115.5
38	5659	-0070	115.5	59.57	5667	1151	1151	115.5	59.57	66	1150	1150	115.5	59.57	43	1201	115.5
39	5667	-0072	115.5	59.57	5675	1149	1149	115.5	59.57	67	1148	1148	115.5	59.57	43	1201	115.5
40	5675	-0074	115.5	59.57	5683	1147	1147	115.5	59.57	68	1146	1146	115.5	59.57	43	1201	115.5
41	5683	-0076	115.5	59.57	5691	1145	1145	115.5	59.57	69	1144	1144	115.5	59.57	43	1201	115.5
42	5691	-0078	115.5	59.57	5699	1143	1143	115.5	59.57	70	1142	1142	115.5	59.57	43	1201	115.5
43	5699	-0080	115.5	59.57	5707	1141	1141	115.5	59.57	71	1140	1140	115.5	59.57	43	1201	115.5
44	5707	-0082	115.5	59.57	5715	1139	1139	115.5	59.57	72	1138	1138	115.5	59.57	43	1201	115.5
45	5715	-0084	115.5	59.57	5723	1137	1137	115.5	59.57	73	1136	1136	115.5	59.57	43	1201	115.5
46	5723	-0086	115.5	59.57	5731	1135	1135	115.5	59.57	74	1134	1134	115.5	59.57	43	1201	115.5
47	5731	-0088	115.5	59.57	5739	1133	1133	115.5	59.57	75	1132	1132	115.5	59.57	43	1201	115.5
48	5739	-0090	115.5	59.57	5747	1131	1131	115.5	59.57	76	1130	1130	115.5	59.57	43	1201	115.5
49	5747	-0092	115.5	59.57	5755	1129	1129	115.5	59.57	77	1128	1128	115.5	59.57	43	1201	115.5
50	5755	-0094	115.5	59.57	5763	1127	1127	115.5	59.57	78	1126	1126	115.5	59.57	43	1201	115.5
51	5763	-0096	115.5	59.57	5771	1125	1125	115.5	59.57	79	1124	1124	115.5	59.57	43	1201	115.5
52	5771	-0098	115.5	59.57	5779	1123	1123	115.5	59.57	80	1122	1122	115.5	59.57	43	1201	115.5
53	5779	-0100	115.5	59.57	5787	1121	1121	115.5	59.57	81	1120	1120	115.5	59.57	43	1201	115.5
54	5787	-0102	115.5	59.57	5795	1119	1119	115.5	59.57	82	1118	1118	115.5	59.57	43	1201	115.5
55	5795	-0104	115.5	59.57	5803	1117	1117	115.5	59.57	83	1116	1116	115.5	59.57	43	1201	115.5
56	5803	-0106	115.5	59.57	5811	1115	1115	115.5	59.57	84	1114	1114	115.5	59.57	43	1201	115.5
57	5811	-0108	115.5	59.57	5819	1113	1113	115.5	59.57	85	1112	1112	115.5	59.57	43	1201	115.5
58	5819	-0110	115.5	59.57	5827	1111	1111	115.5	59.57	86	1110	1110	115.5	59.57	43	1201	115.5
59	5827	-0112	115.5	59.57	5835	1109	1109	115.5	59.57	87	1108	1108	115.5	59.57	43	1201	115.5
60	5835	-0114	115.5	59.57	5843	1107	1107	115.5	59.57	88	1106	1106	115.5	59.57	43	1201	115.5
61	5843	-0116	115.5	59.57	5851	1105	1105	115.5	59.57	89	1104	1104	115.5	59.57	43	1201	115.5
62	5851	-0118	115.5	59.57	5859	1103	1103	115.5	59.57	90	1102	1102	115.5	59.57	43	1201	115.5
63	5859	-0120	115.5	59.57	5867	1101	1101	115.5	59.57	91	1100	1100	115.5	59.57	43	1201	115.5
64	5867	-0122	115.5	59.57	5875	1099	1099	115.5	59.57	92	1098	1098	115.5	59.57	43	1201	115.5
65	5875	-0124	115.5	59.57	5883	1097	1097	115.5	59.57	93	1096	1096	115.5	59.57	43	1201	115.5
66	5883	-0126	115.5	59.57	5891	1095	1095	115.5	59.57	94	1094	1094	115.5	59.57	43	1201	115.5
67	5891	-0128	115.5	59.57	5899	1093	1093	115.5	59.57	95	1092	1092	115.5	59.57	43	1201	115.5
68	5899	-0130	115.5	59.57	5907	1											