

Harris Central Appraisal District

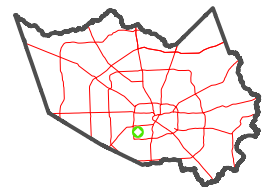


0 45 90 180 Feet

PUBLICATION DATE:
6/22/2023

Geospatial or map data maintained by the Harris Central Appraisal District is for informational purposes and may not have been prepared for or be suitable for legal, engineering, or surveying purposes. It does not represent an on-the-ground survey and only represents the approximate location of property boundaries.

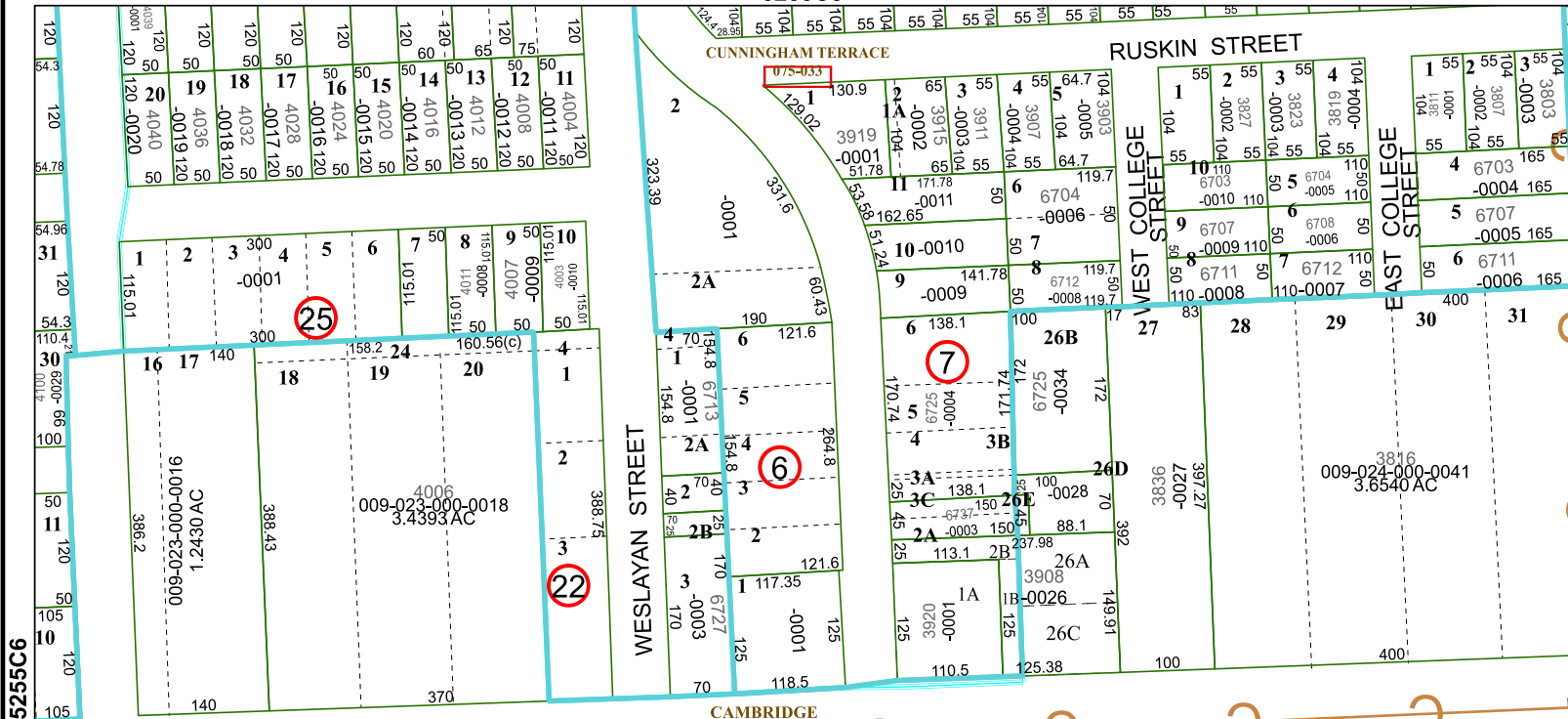
MAP LOCATION



FACET 5255C7

1	2	3	4	1
5	6	7	8	5
9	10	11	12	9

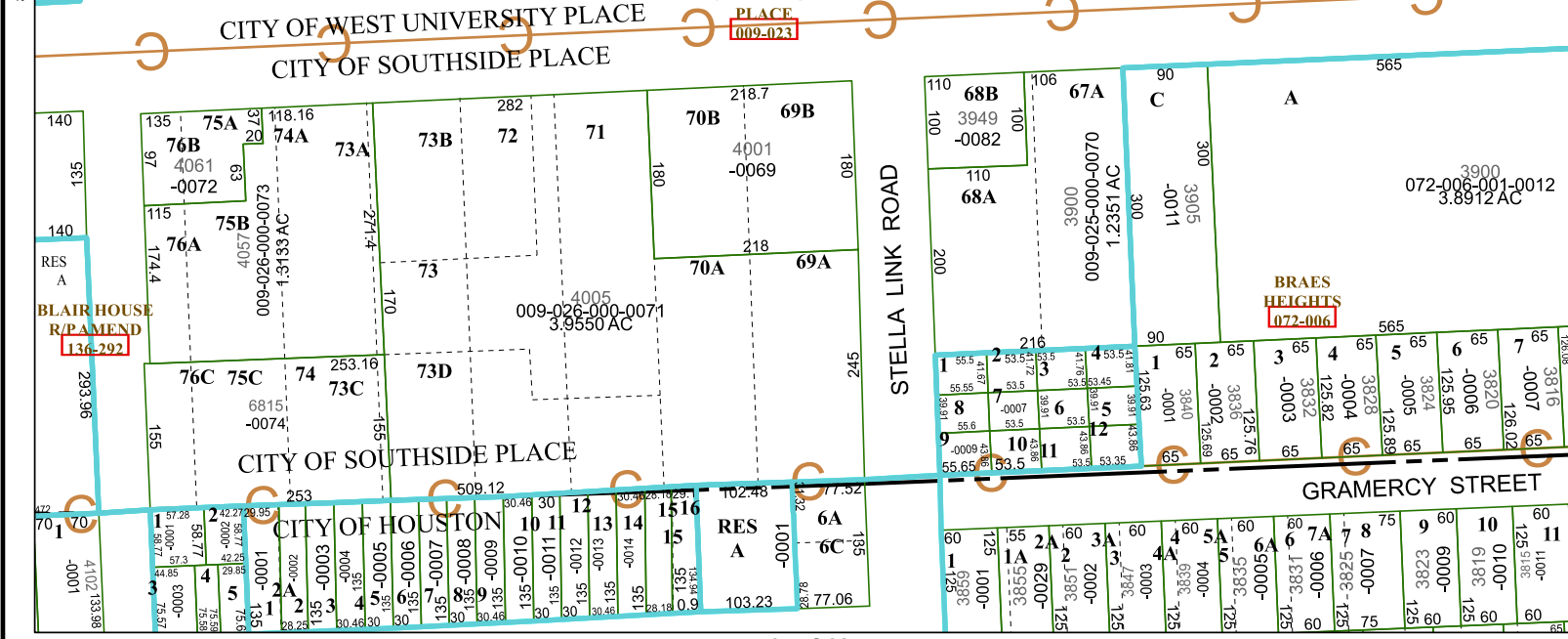
5255C3



CAMBRIDGE PLACE

009-023

5255C11



BLAIR HOUSE
R/P/AMEND
136-292

BRAES
HEIGHTS
072-006