

Harris Central Appraisal District

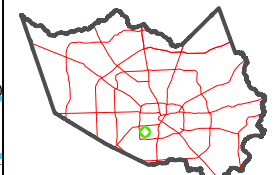


0 45 90 180 Feet

PUBLICATION DATE: 1/29/2024

Geospatial or map data maintained by the Harris Central Appraisal District is for informational purposes and may not be suitable for legal, engineering, or surveying purposes. It does not represent an on-the-ground survey and only represents the approximate location of property boundaries.

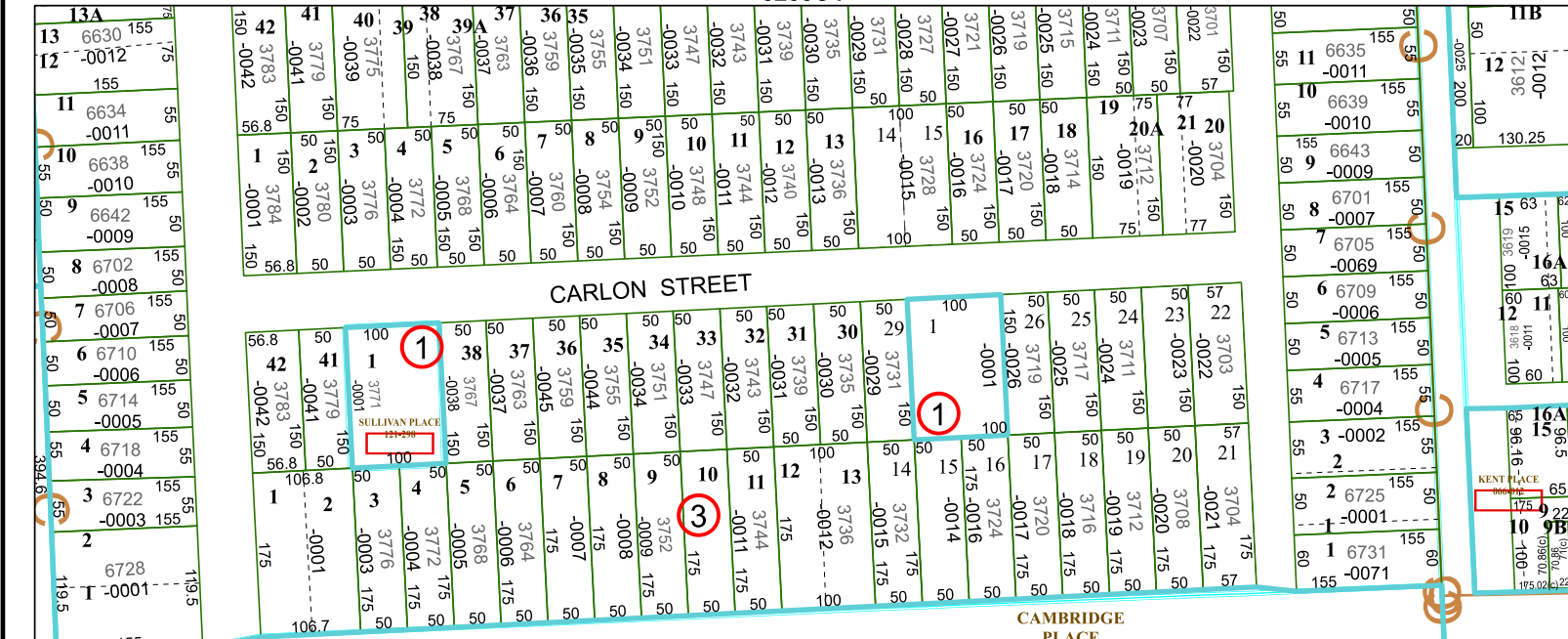
MAP LOCATION



FACET 5255C8

2	3	4	1	2
6	7	8	5	6
10	11	12	9	10

5255C4



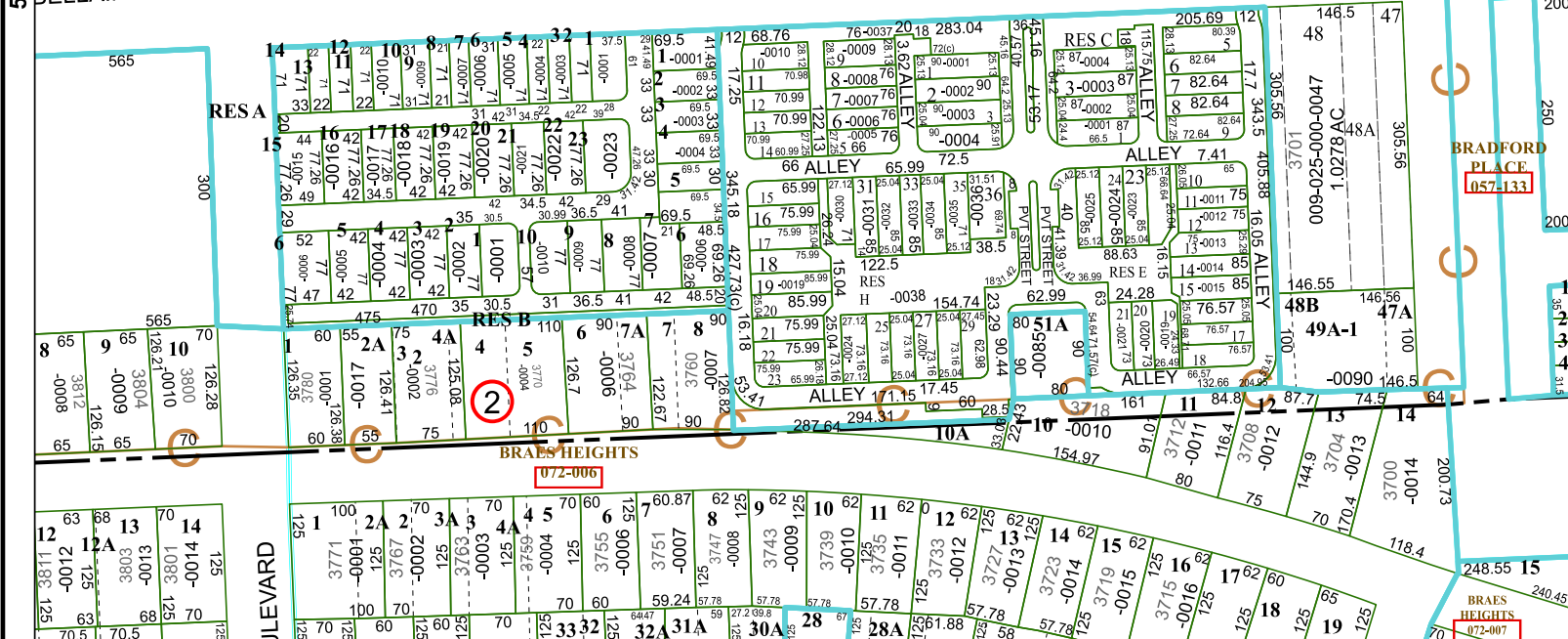
CARLON STREET

CAMBRIDGE PLACE 009-023

5255C7

BELLAIRE BOULEVARD

5255C12



RESA

ILEVARD

BRAES HEIGHTS 072-006

BRADFORD PLACE 057-133

BRAES HEIGHTS 072-007

RES C 3-0003

ALLEY 7.15

ALLEY 7.15

ALLEY 7.15

ALLEY 7.15