

5256B2

Harris Central Appraisal District



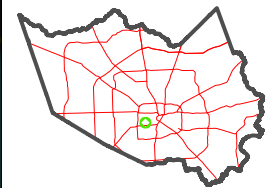
0 45 90 180 Feet

PUBLICATION DATE: 12/30/2023

Geospatial or map data maintained by the Harris Central Appraisal District is for informational purposes and may not have been prepared for or be suitable for legal, engineering, or surveying purposes. It does not represent an on-the-ground survey and only represents the approximate location of property boundaries.

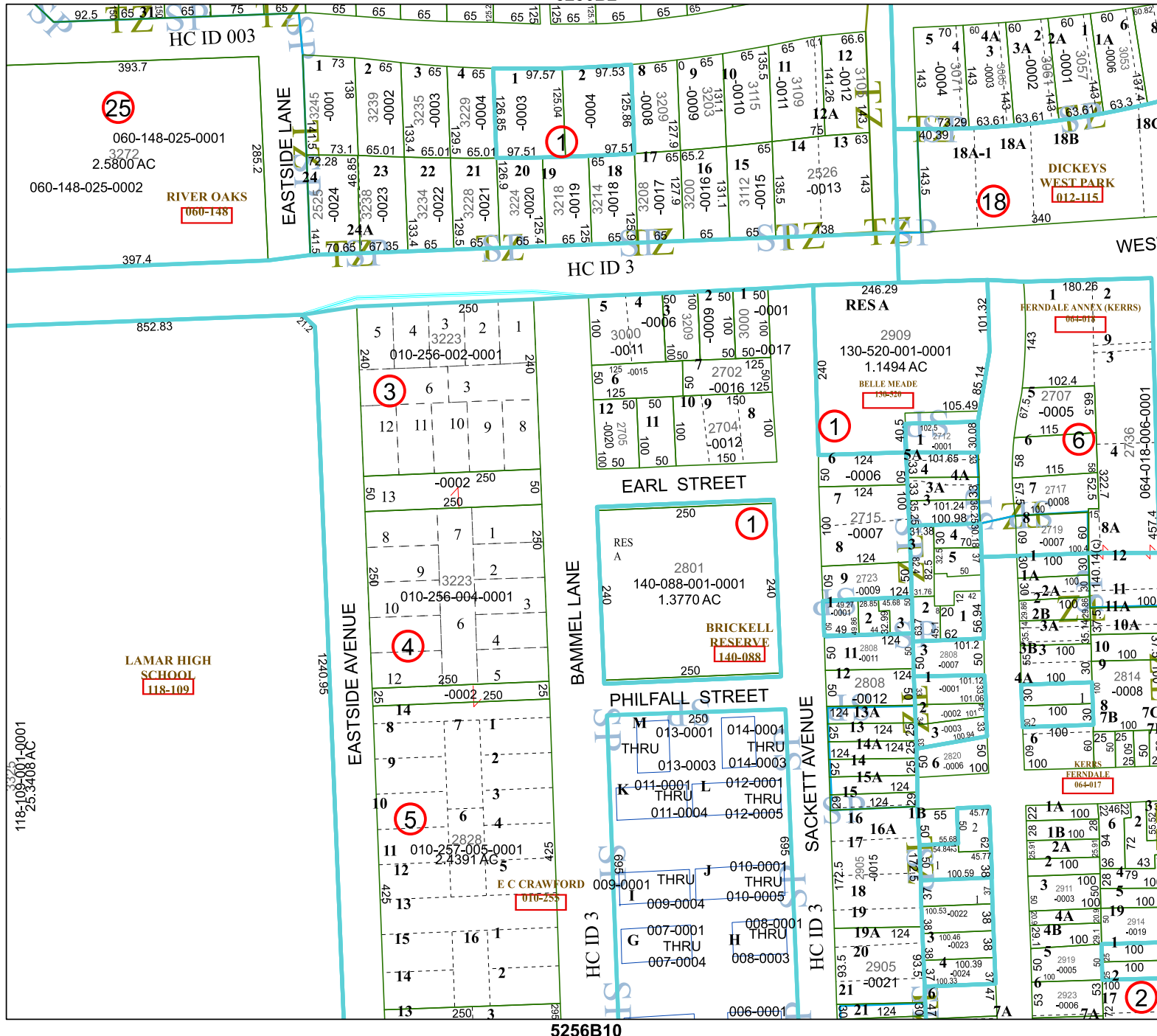


MAP LOCATION



FACET 5256B6

4	1	2	3	4
8	5	6	7	8
12	9	10	11	12



5256B10

5256B5

5256B7

118-109-001-0001
25.3408 AC

LAMAR HIGH SCHOOL
118-109

25

1

18

3

1

4

5

1

6

2