

Harris Central Appraisal District



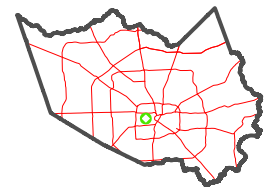
0 45 90 180 Feet

PUBLICATION DATE: 6/5/2023

Geospatial or map data maintained by the Harris Central Appraisal District is for informational purposes and may not have been prepared for or be suitable for legal, engineering, or surveying purposes. It does not represent an on-the-ground survey and only represents the approximate location of property boundaries.

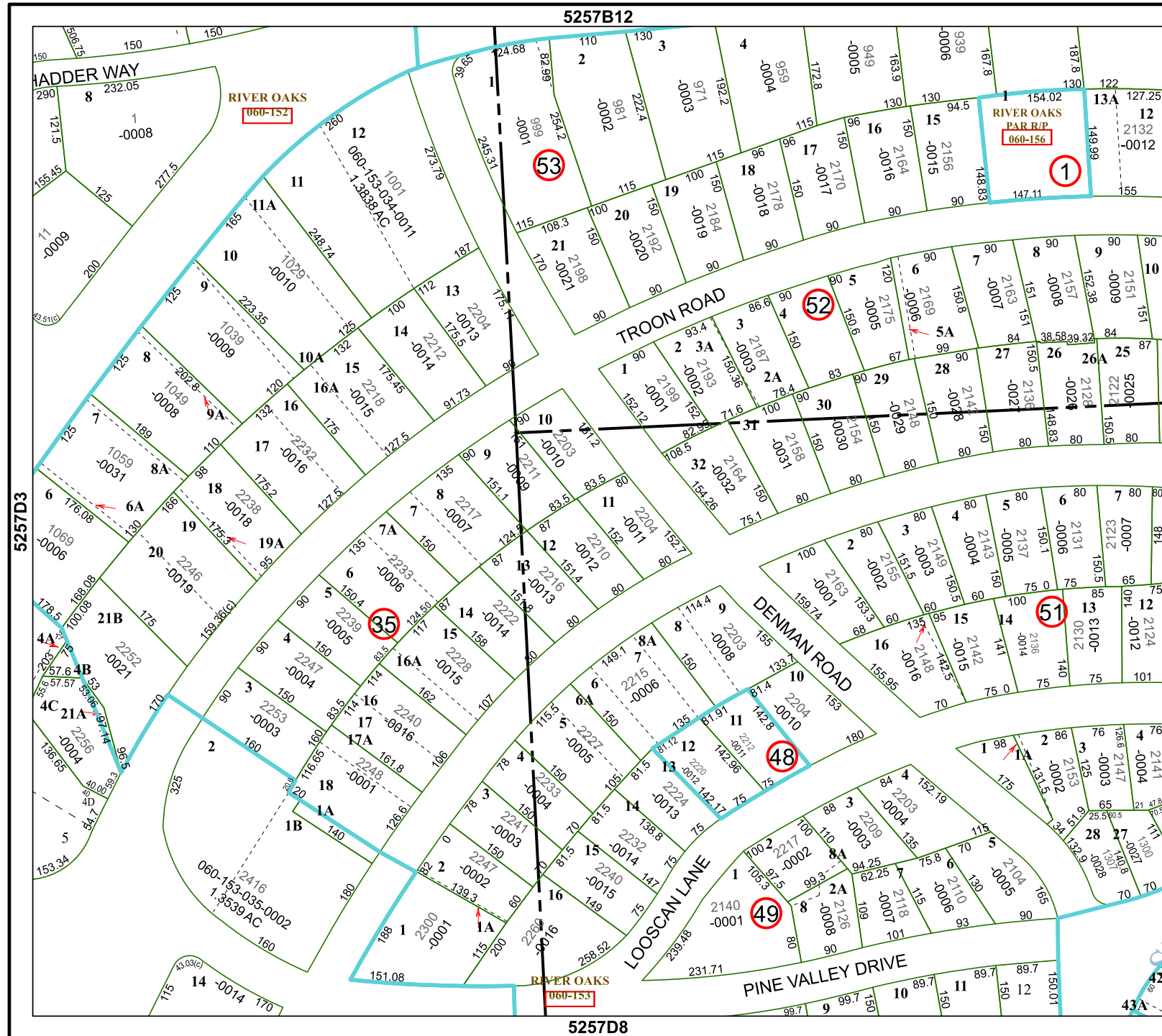


MAP LOCATION



FACET 5257D4

10	11	12	9	10
2	3	4	1	2
6	7	8	5	6



5257B12

5257D8

5257D3

5357C