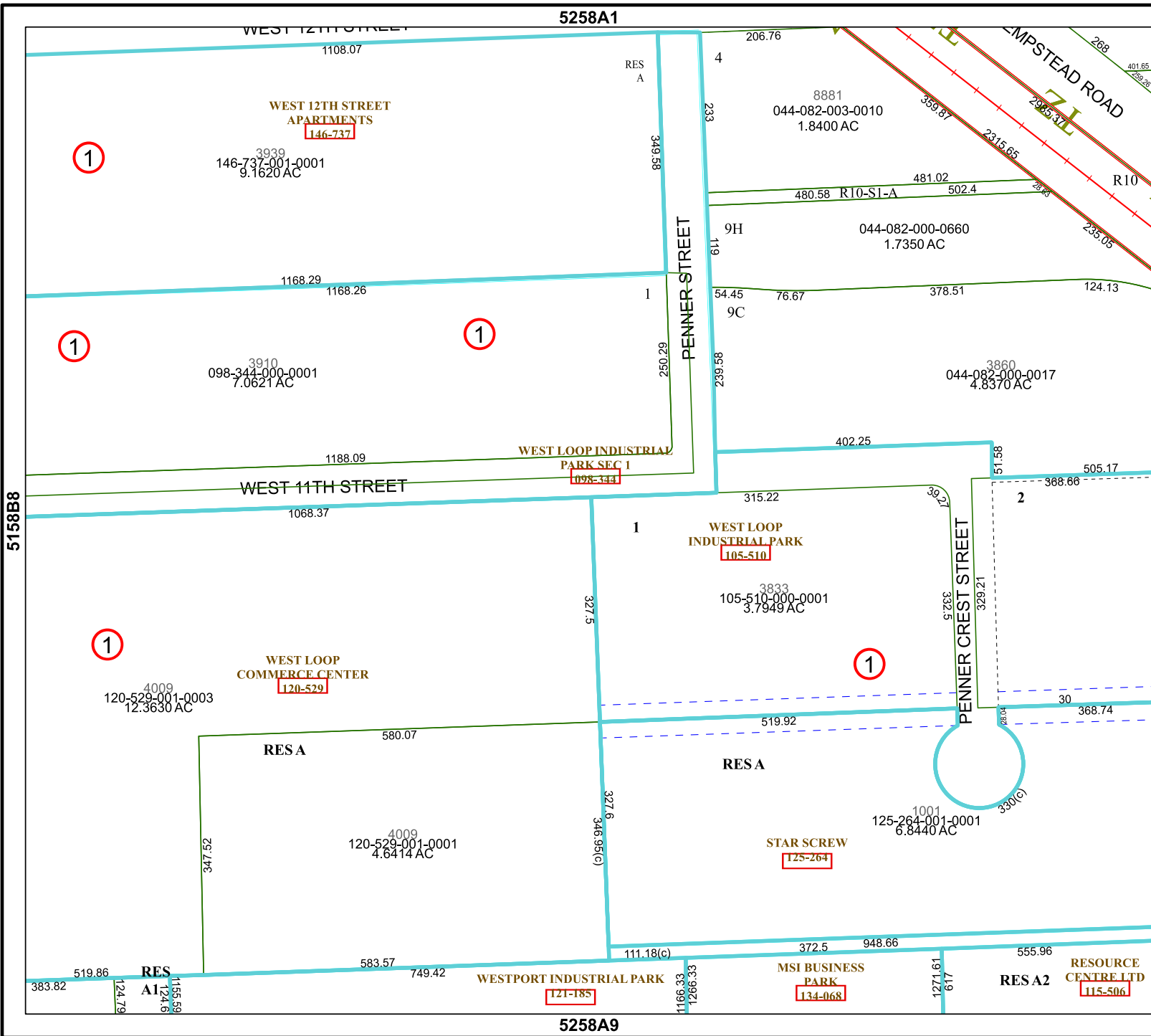


5258A1

5258A9



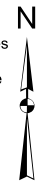
Harris Central Appraisal District



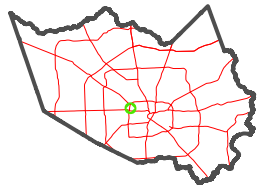
0 45 90 180 Feet

PUBLICATION DATE: 12/30/2023

Geospatial or map data maintained by the Harris Central Appraisal District is for informational purposes and may not have been prepared for or be suitable for legal, engineering, or surveying purposes. It does not represent an on-the-ground survey and only represents the approximate location of property boundaries.



MAP LOCATION



FACET 5258A5

3	4	1	2	3
7	8	5	6	7
11	12	9	10	11

5158B8

5258A6

1

1

1

1

1

2

300(e)

RES A1

RES A

RES A

RES A2

RES A

I

1

WESTPORT INDUSTRIAL PARK

MSI BUSINESS PARK

RESOURCE CENTRE LTD

WEST 12TH STREET APARTMENTS

WEST LOOP INDUSTRIAL PARK SEC 1

WEST LOOP INDUSTRIAL PARK

WEST LOOP COMMERCE CENTER

STAR SCREW

8881 044-082-003-0010 1.8400 AC

044-082-000-0660 1.7350 AC

044-082-000-0017 4.8370 AC

105-510-000-0001 3.7949 AC

120-529-001-0003 12.3630 AC

120-529-001-0001 4.6414 AC

125-264-001-0001 6.8440 AC

146-737-001-0001 9.1620 AC

098-344-000-0001 7.0621 AC

WEST 11TH STREET

PENNER STREET

PENNER CREST STREET

AMPSTEAD ROAD

R10

4

233

119

250.29

327.5

327.5

346.95(c)

111.18(c)

1166.33

206.76

480.58

54.45

315.22

3833

519.92

372.5

1161.19

359.87

481.02

76.67

402.25

39.27

329.21

1001

948.66

1271.16

268

2315.65

28.63

51.58

329.21

28.04

330(e)

555.96

171.6

401.65

239.38

124.13

505.17

368.66

368.74

330(e)

124.79

1155.59