

Harris Central Appraisal District

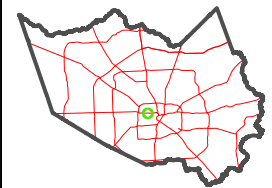


0 45 90 180 Feet

PUBLICATION DATE: 1/10/2023

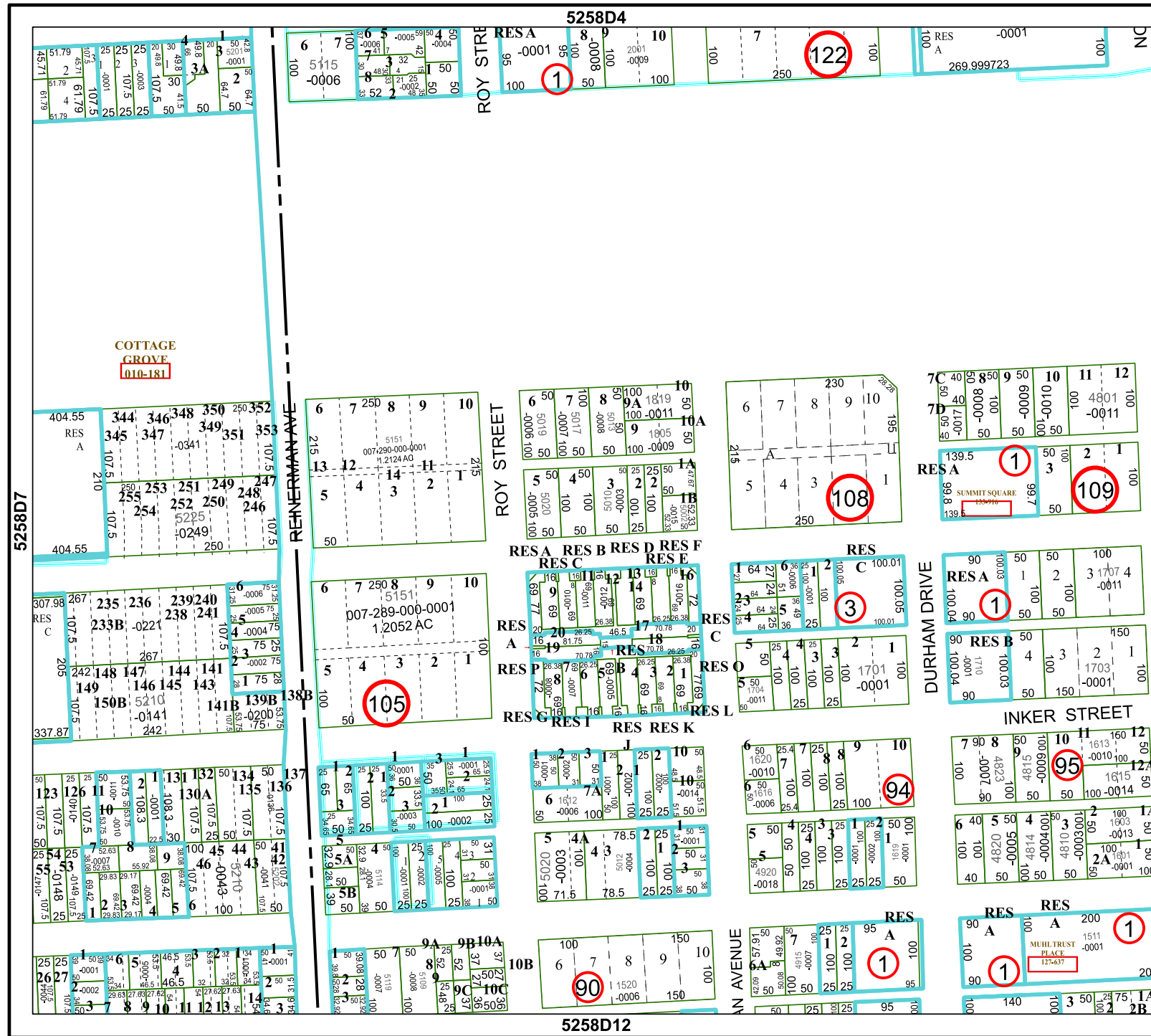
Geospatial or map data maintained by the Harris Central Appraisal District is for informational purposes and may not be suitable for legal, engineering, or surveying purposes. It does not represent an on-the-ground survey and only represents the approximate location of property boundaries.

MAP LOCATION



FACET 5258D8

2	3	4	1	2
6	7	8	5	6
10	11	12	9	10



5258D4

5258D12

COTTAGE GROVE
010-181

5358C5

5258D7