

# Harris Central Appraisal District

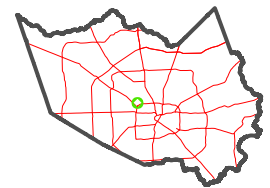


0 45 90 180 Feet

PUBLICATION DATE: 3/11/2024

Geospatial or map data maintained by the Harris Central Appraisal District is for informational purposes and may not have been prepared for or be suitable for legal, engineering, or surveying purposes. It does not represent an on-the-ground survey and only represents the approximate location of property boundaries.

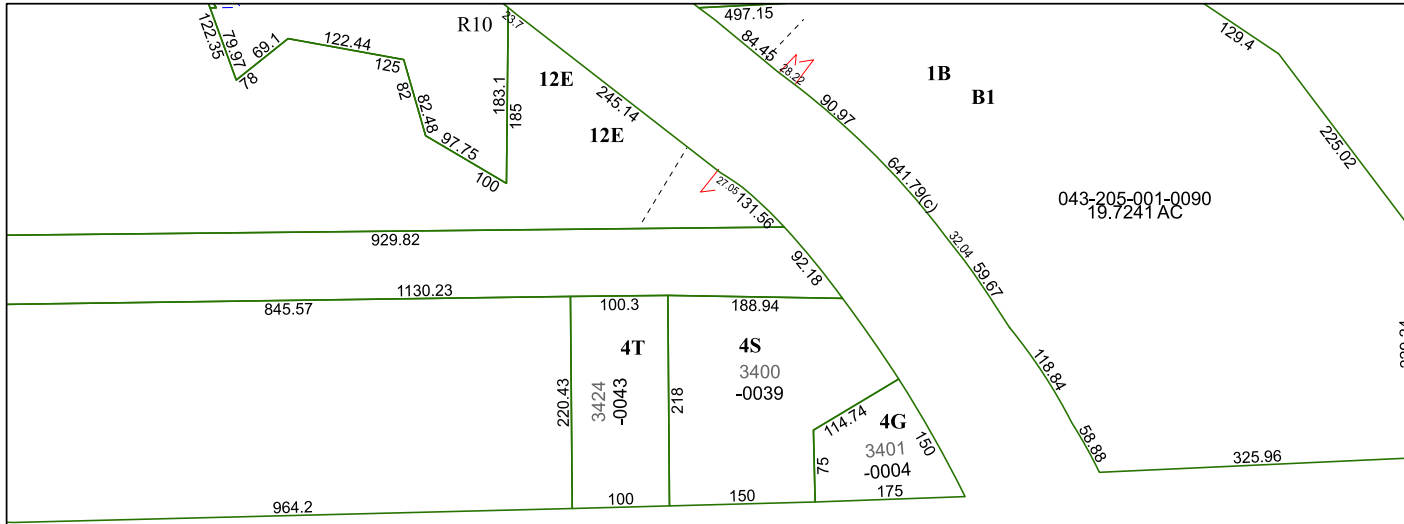
### MAP LOCATION



## FACET 5259A1

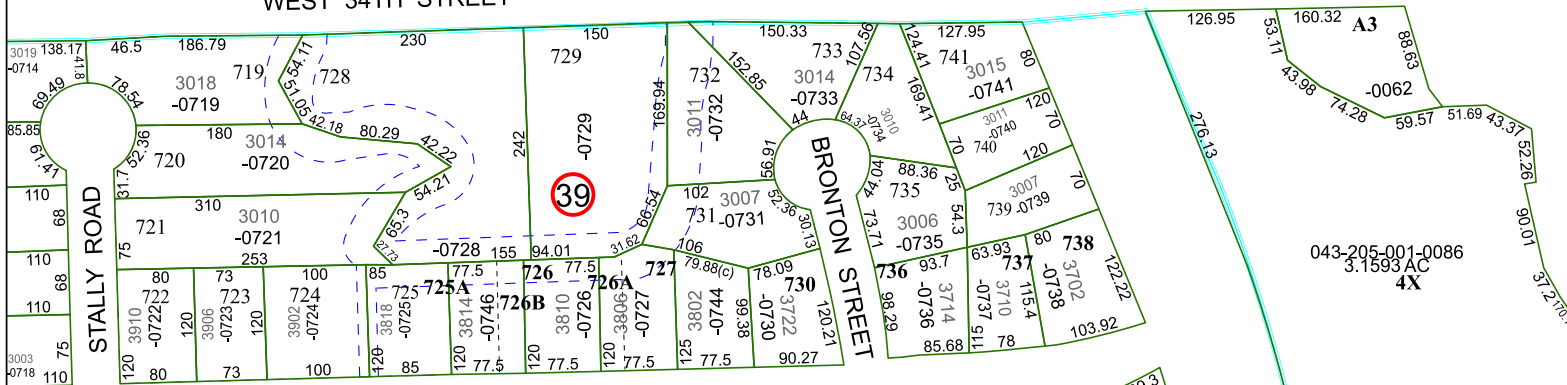
11	12	9	10	11
3	4	1	2	3
7	8	5	6	7

5260C9



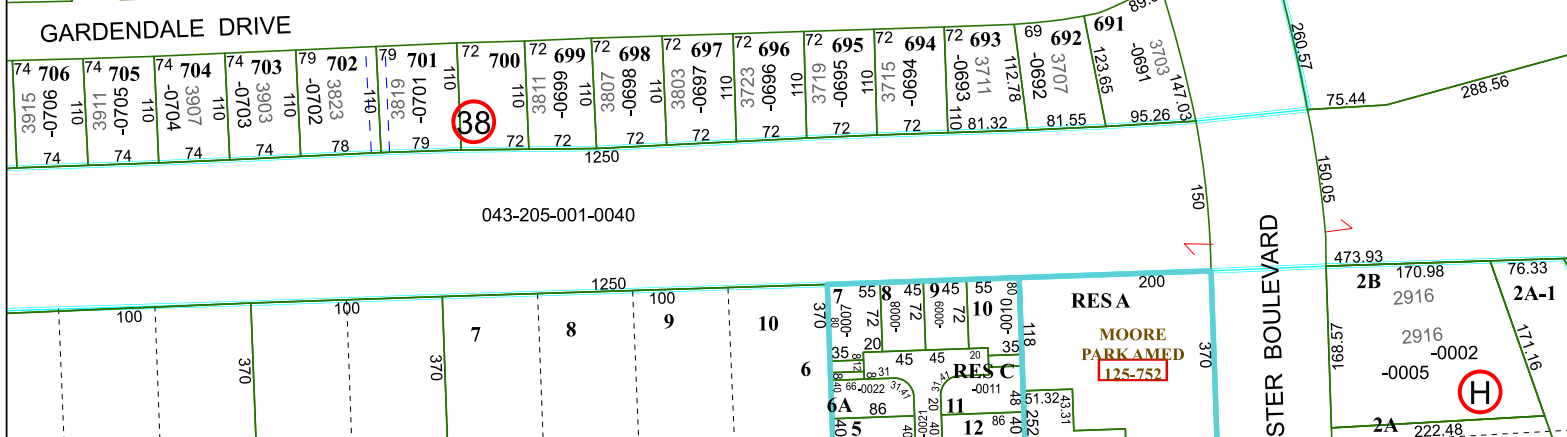
WEST 34TH STREET

5159B4



5259A2

GARDENDALE DRIVE



5259A5

RESA  
MOORE PARKAMED  
125-752

STER BOULEVARD

H