

Harris Central Appraisal District



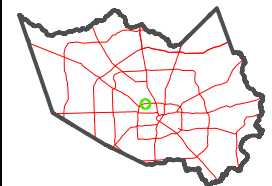
0 45 90 180 Feet

PUBLICATION DATE: 1/6/2023

Geospatial or map data maintained by the Harris Central Appraisal District is for informational purposes and may not have been prepared for or be suitable for legal, engineering, or surveying purposes. It does not represent an on-the-ground survey and only represents the approximate location of property boundaries.



MAP LOCATION



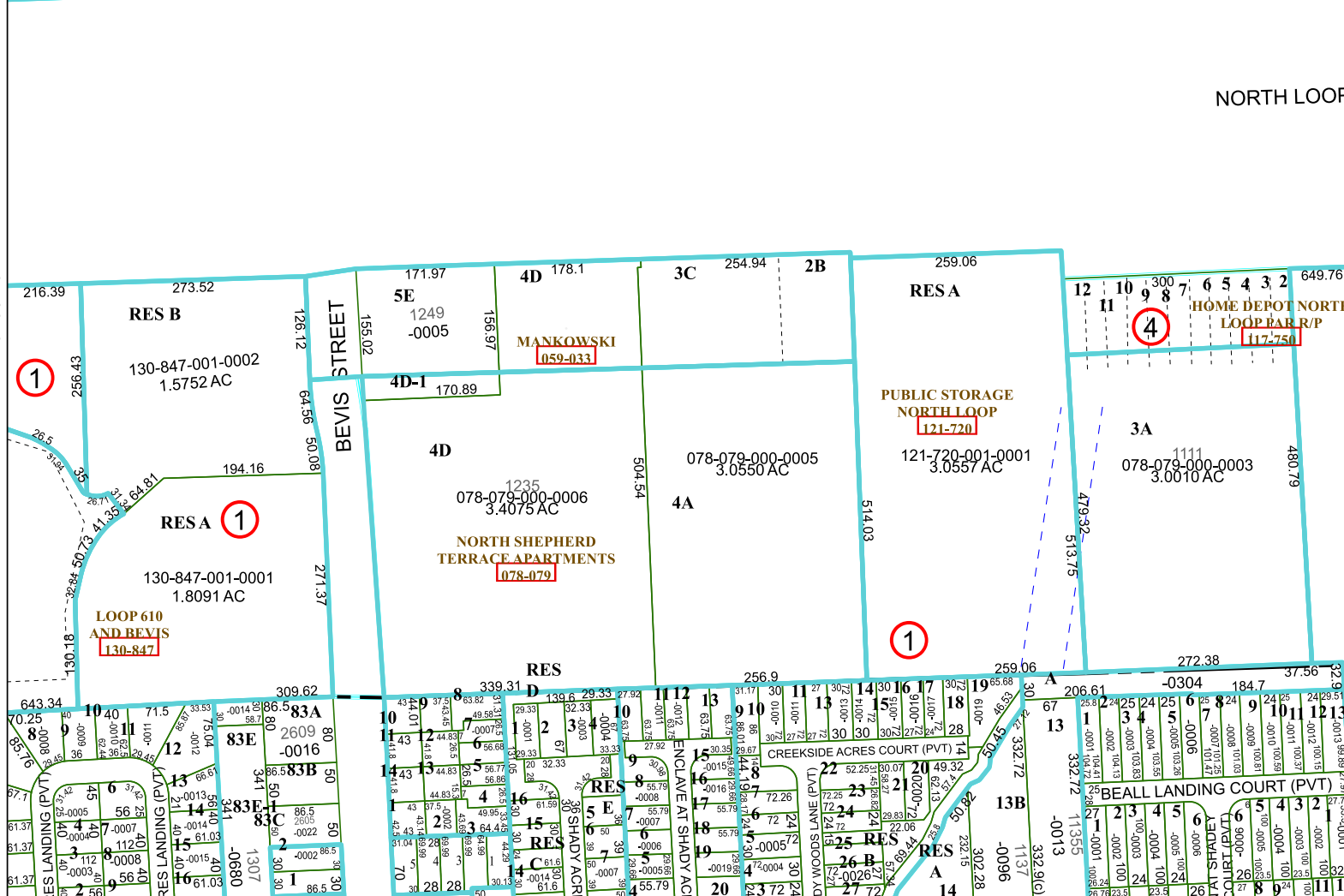
FACET 5259B6

4	1	2	3	4
8	5	6	7	8
12	9	10	11	12

5259B2

112 213	112 212	112 211	112 210	112 209	112 208	112 211	112 210	112 209	112 208
112 212	112 211	112 210	112 209	112 208	112 207	112 211	112 210	112 209	112 208
112 211	112 210	112 209	112 208	112 207	112 206	112 210	112 209	112 208	112 207
112 210	112 209	112 208	112 207	112 206	112 205	112 209	112 208	112 207	112 206
112 209	112 208	112 207	112 206	112 205	112 204	112 208	112 207	112 206	112 205

WEST 30TH STREET SHEPHERD FOREST



5259B10

5259B5

5259B7