

Harris Central Appraisal District

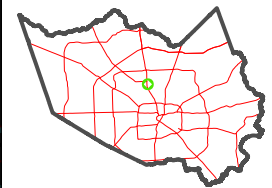


0 45 90 180 Feet

PUBLICATION DATE: 1/6/2023

Geospatial or map data maintained by the Harris Central Appraisal District is for informational purposes and may not have been prepared for or be suitable for legal, engineering, or surveying purposes. It does not represent an on-the-ground survey and only represents the approximate location of property boundaries.

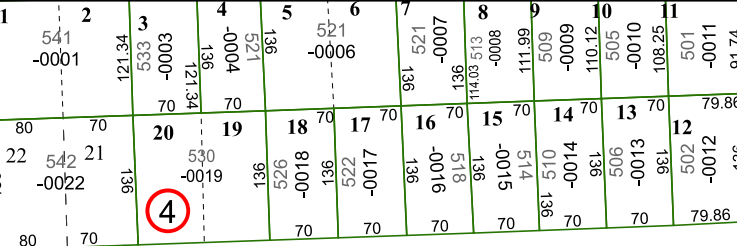
MAP LOCATION



FACET 5262B4

10	11	12	9	10
2	3	4	1	2
6	7	8	5	6

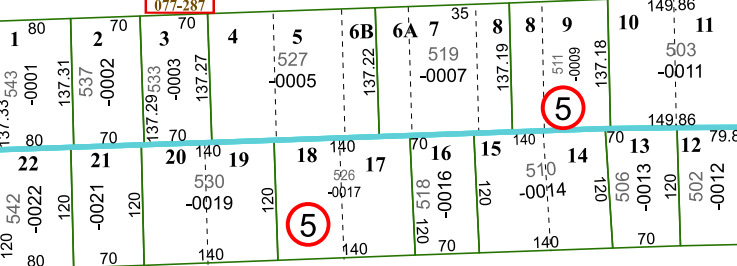
5263D12



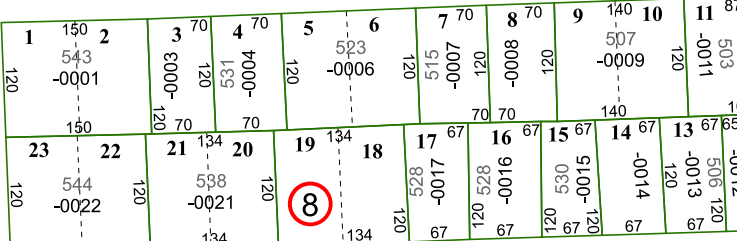
NORTH SHEPHERD MANOR

077-287

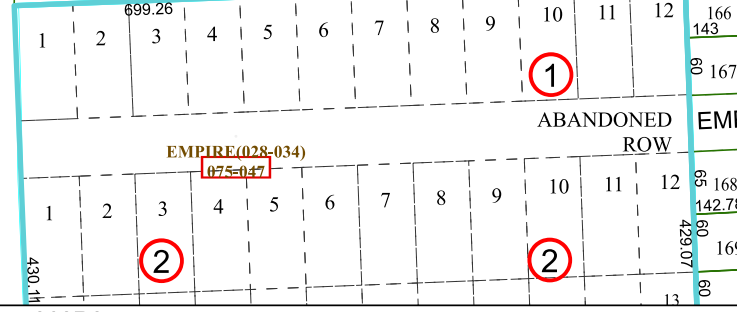
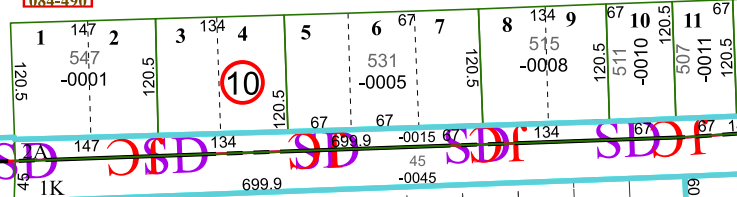
NELDA ROAD



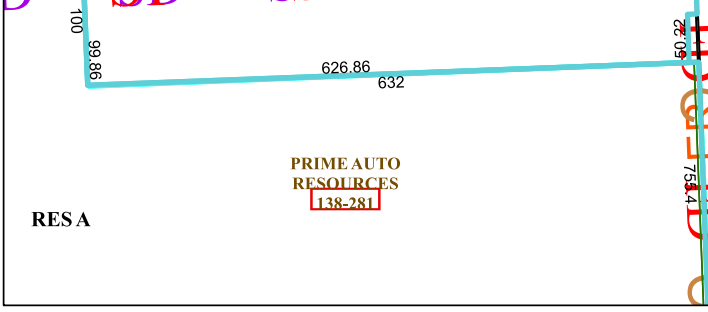
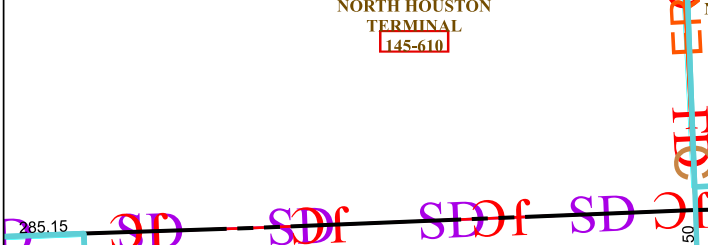
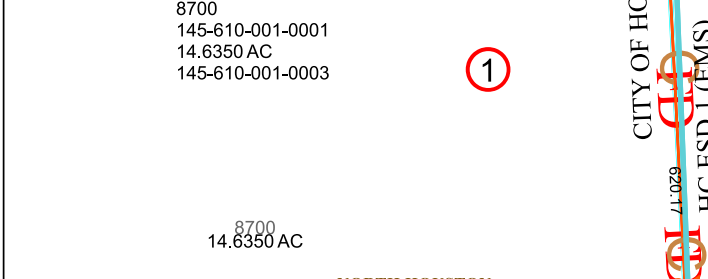
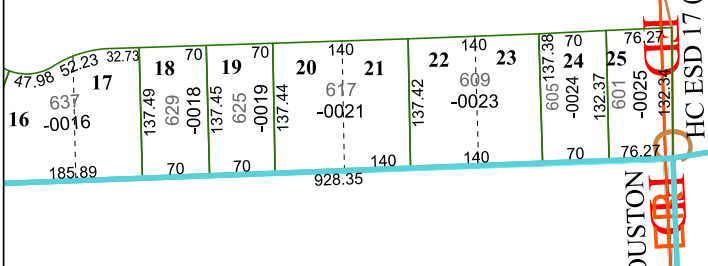
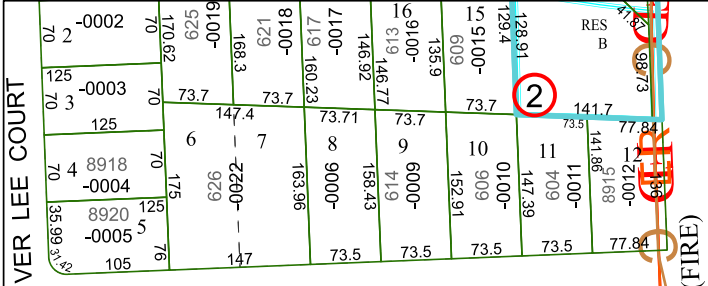
MIRIANNE STREET



BERTRAND STREET



5262B8



5262B3

8700
145-610-001-0001
14.6350 AC
145-610-001-0003

8700
14.6350 AC

NORTH HOUSTON TERMINAL
145-610

PRIME AUTO RESOURCES
138-281

RESA

CITY OF HOUSTON
HC ESD 17 (FIRE)
HC ESD 1 (EMS)

EMPIRE(028-034)
075-047