

5262C1

5262C9

# Harris Central Appraisal District

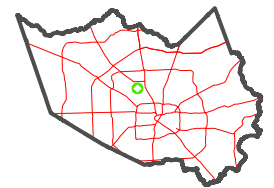


0 45 90 180 Feet

PUBLICATION DATE: 3/25/2024

Geospatial or map data maintained by the Harris Central Appraisal District is for informational purposes and may not have been prepared for or be suitable for legal, engineering, or surveying purposes. It does not represent an on-the-ground survey and only represents the approximate location of property boundaries.

MAP LOCATION



# FACET 5262C5

3	4	1	2	3
7	8	5	6	7
11	12	9	10	11

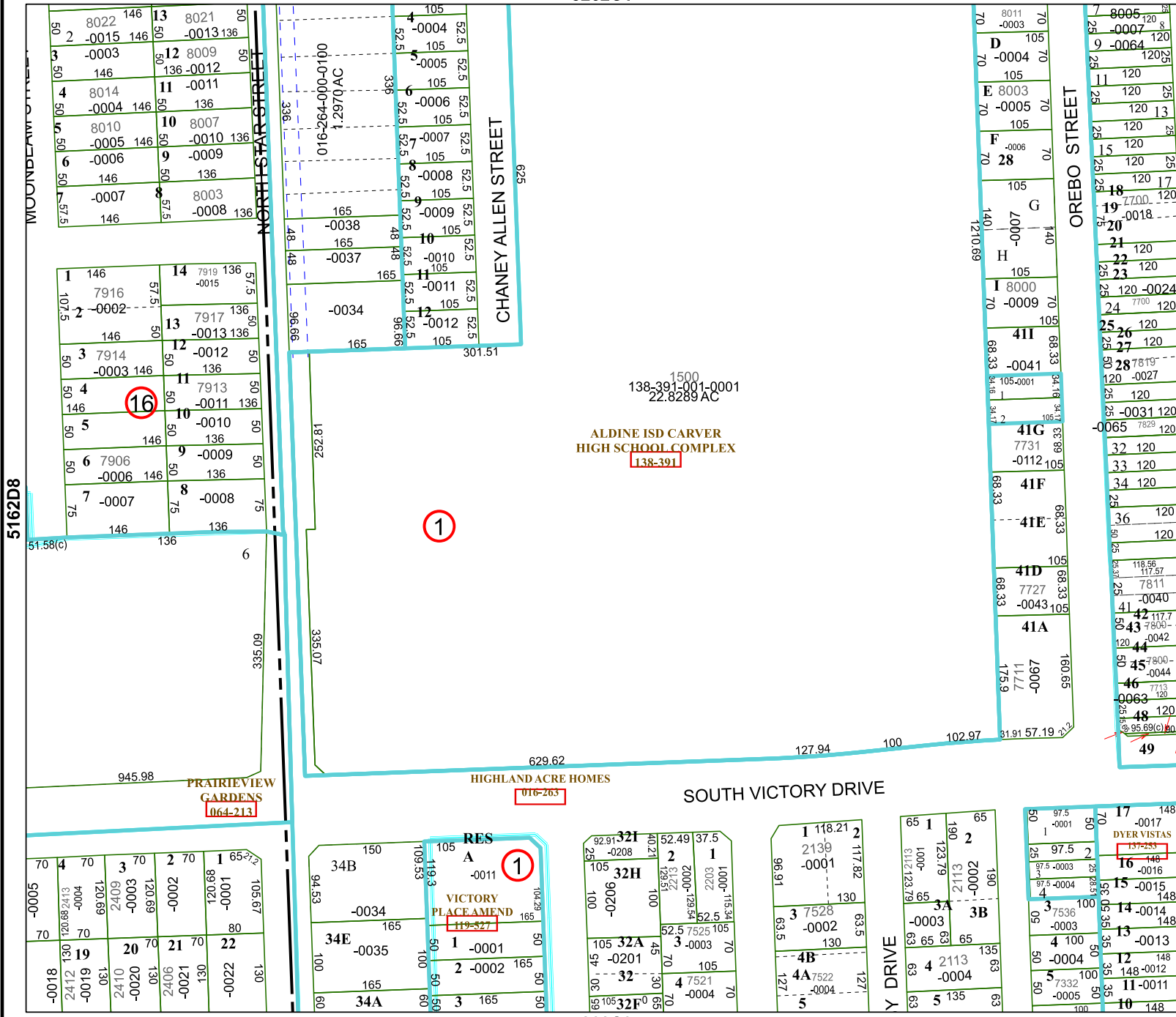
ALDINE ISD CARVER HIGH SCHOOL COMPLEX  
138-391

1500  
138-391-001-0001  
22.8289 AC

1

1

1



5162D8

5262C6

5262C5