

Harris Central Appraisal District



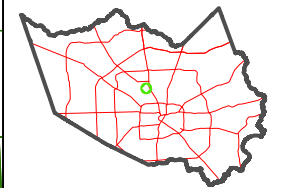
0 50 100 200 Feet

PUBLICATION DATE: 3/16/2026

Geospatial or map data maintained by the Harris Central Appraisal District is for informational purposes and may not have been prepared for or be suitable for legal, engineering, or surveying purposes. It does not represent an on-the-ground survey and only represents the approximate location of property boundaries.



MAP LOCATION

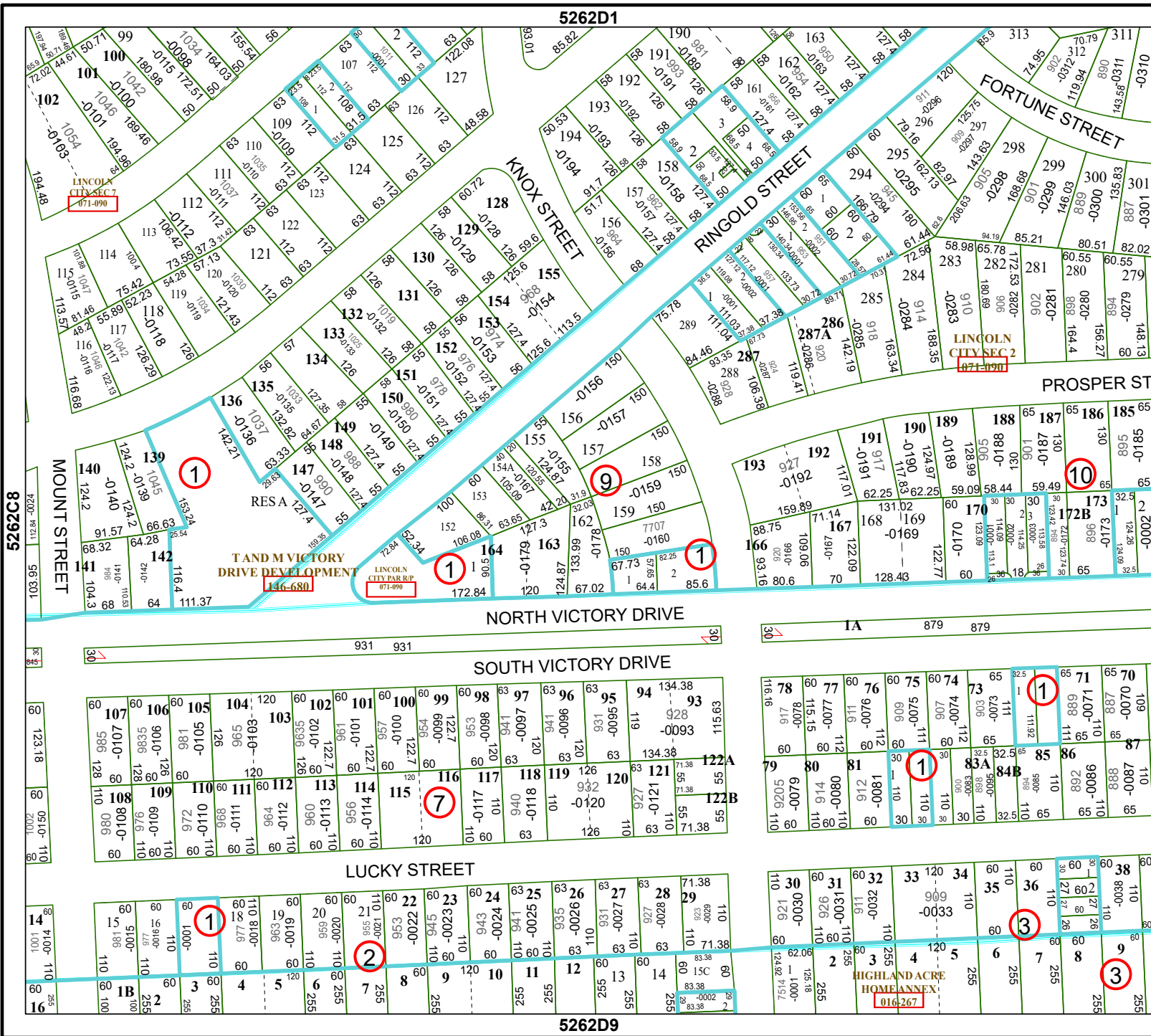


FACET 5262D5

3	4	1	2	3
7	8	5	6	7
11	12	9	10	11

5262D1

5262D9



5262C8

5262D8

5262D5